

## Supporting Information

*Rec. Nat. Prod.* X:X (2017) XX-XX

### A new dibenzofuran from the barks of *Sorbus commixta*

Seong Yeon Choi<sup>1</sup>, Birang Jeong<sup>1</sup>, Hyeon Seok Jang<sup>1</sup>, Jiho Lee<sup>1</sup>, Kiwon Ko<sup>1</sup>  
Hyunha Kim<sup>1</sup>, Jua Hong<sup>1</sup>, Young Soo Bae<sup>2</sup> and Heejung Yang<sup>\*1</sup>

<sup>1</sup>College of Pharmacy; Kangwon National University, Chuncheon 24341, Republic of Korea

<sup>2</sup>College of Forest and Environmental Sciences, Kangwon National University, Chuncheon  
24341, Republic of Korea

Table of Contents	Page
<b>S1:</b> HRMS Spectrum of Compound <b>7</b>	2
<b>S2:</b> <sup>1</sup> H-NMR (400 MHz, CDCl <sub>3</sub> ) Spectrum of Compound <b>7</b>	3
<b>S3:</b> <sup>13</sup> C-NMR + DEPT (100 MHz, CDCl <sub>3</sub> ) Spectrum of Compound <b>7</b>	4
<b>S4:</b> HSQC Spectrum of Compound <b>7</b>	5
<b>S5:</b> Expansion HSQC Spectrum of Compound <b>7</b>	6
<b>S6:</b> HMBC Spectrum of Compound <b>7</b>	7
<b>S7:</b> Expansion HMBC Spectrum of Compound <b>7</b>	8
<b>S8:</b> HMBC patterns of Compound <b>7</b>	9

### Single Mass Analysis

Tolerance = 5.0 PPM / DBE: min = -1.5, max = 50.0

Element prediction: Off

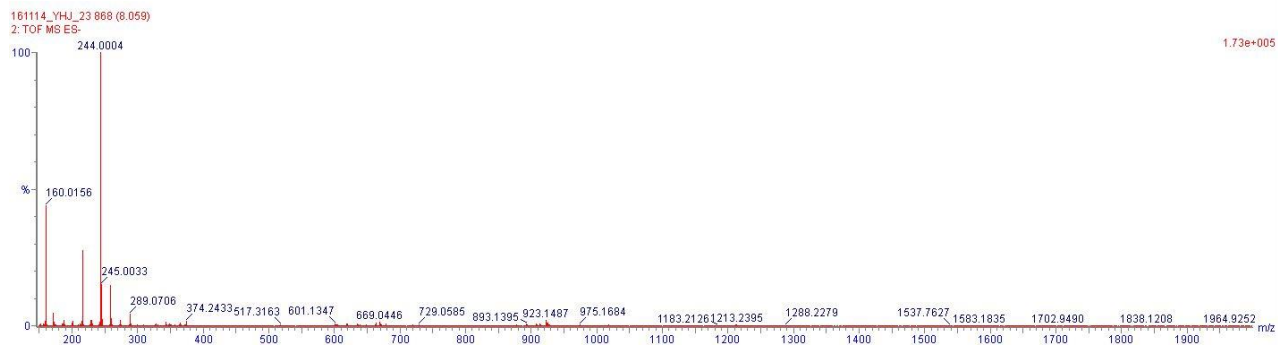
Number of isotope peaks used for i-FIT = 3

Monoisotopic Mass, Even Electron Ions

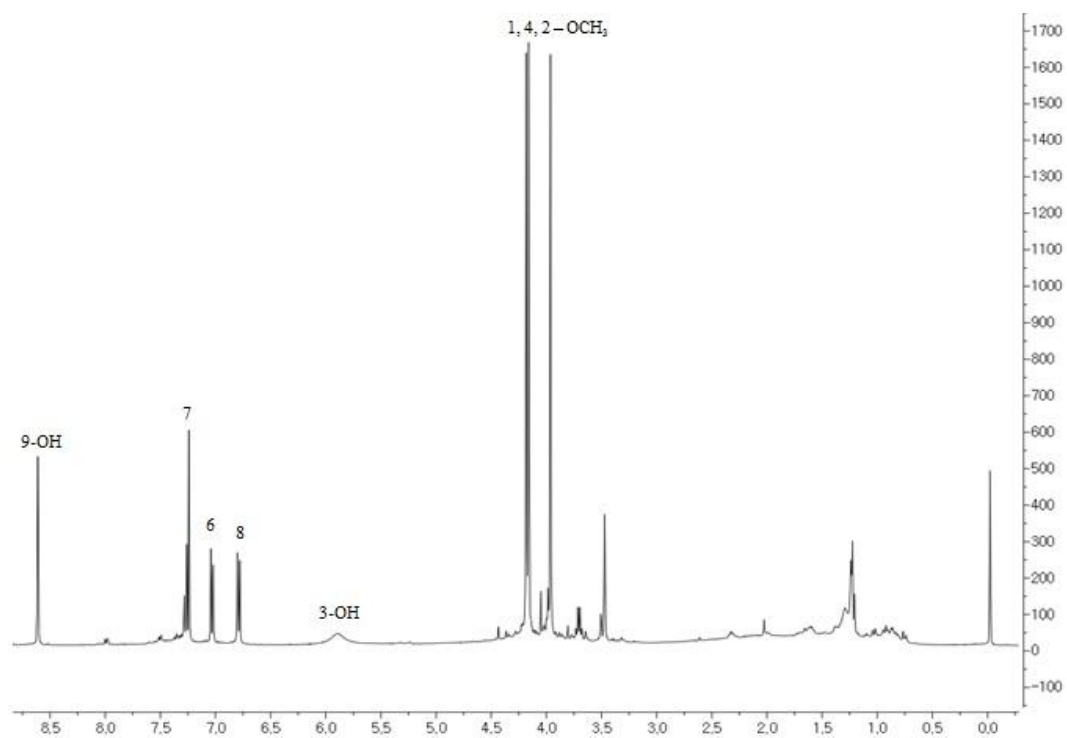
51 formula(e) evaluated with 1 results within limits (all results (up to 1000) for each mass)

Elements Used:

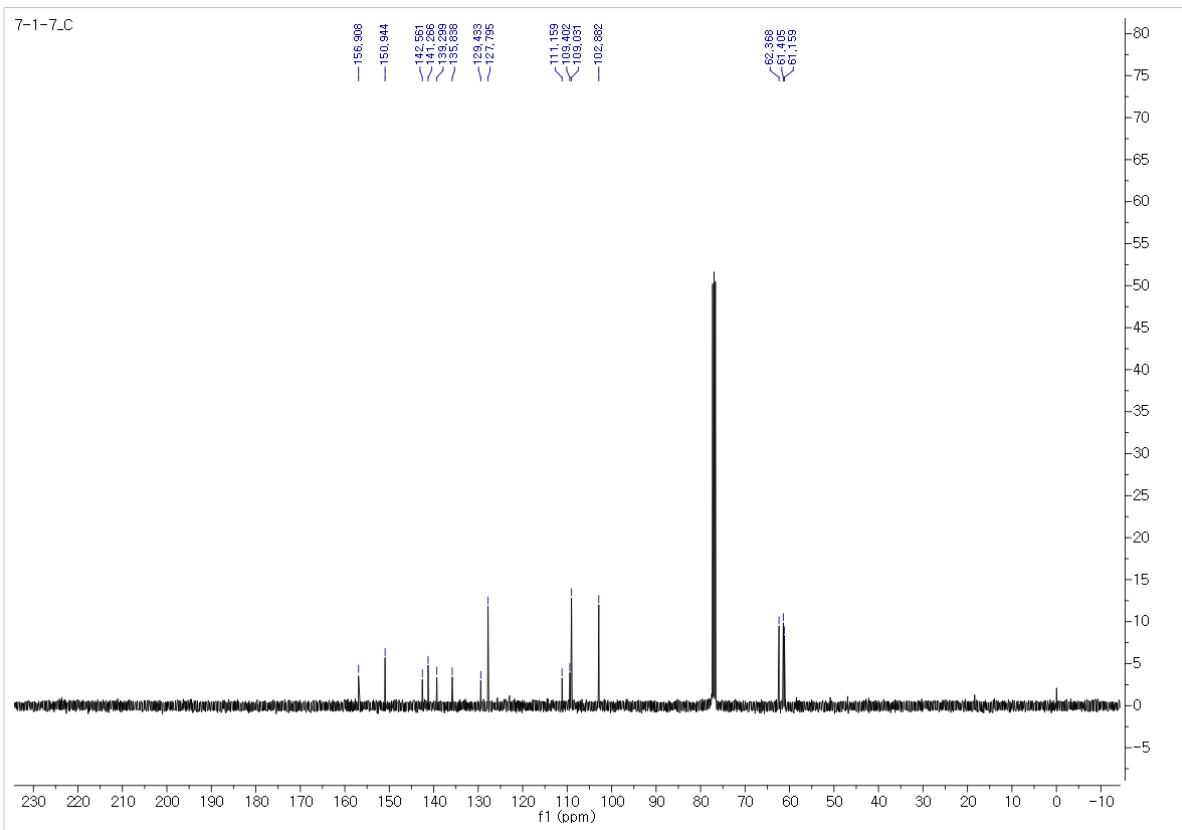
Mass	Calc. Mass	mDa	PPM	DBE	Formula	i-FIT	i-FIT Norm	Fit Conf %	C	H	O
289.0708	289.0712	-0.4	-1.4	9.5	C <sub>15</sub> H <sub>13</sub> O <sub>6</sub>	127.1	n/a	n/a	15	13	6



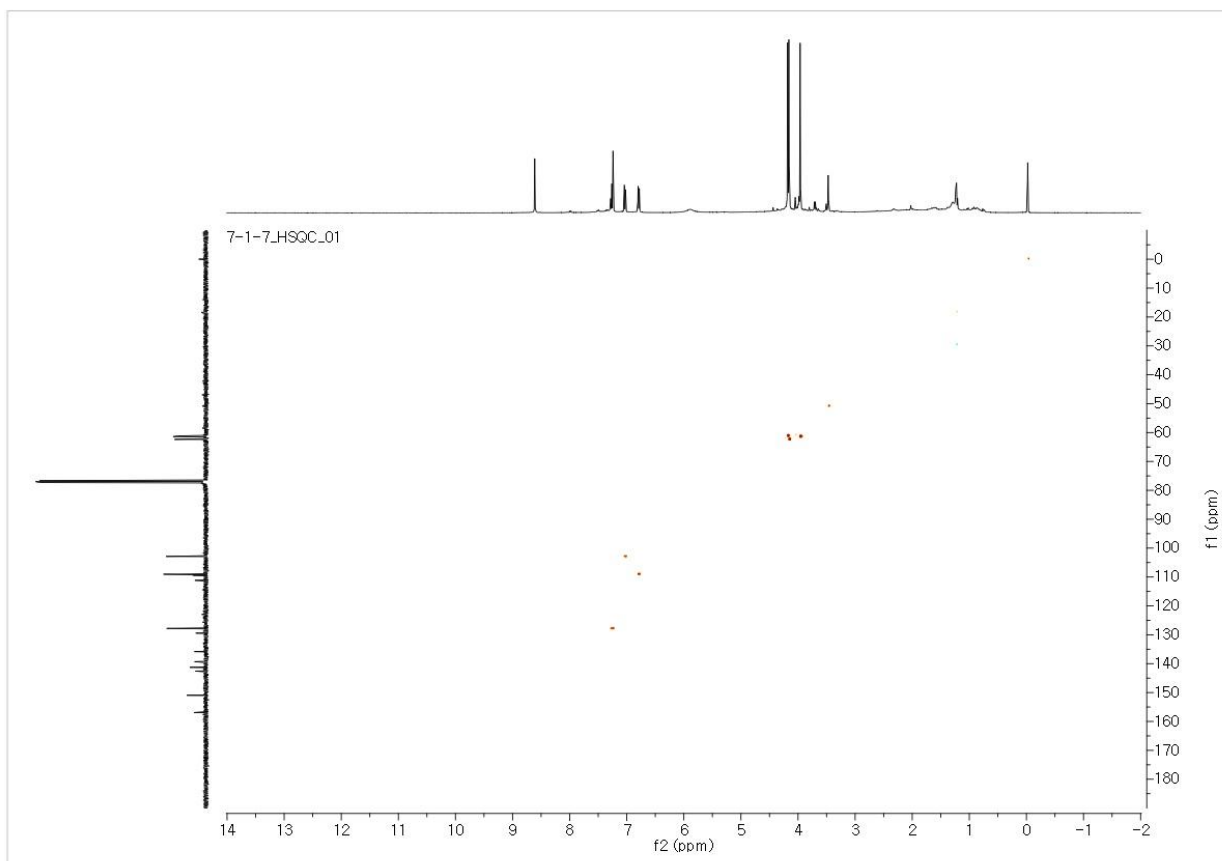
**S1: HRMS Spectrum of Compound 7**



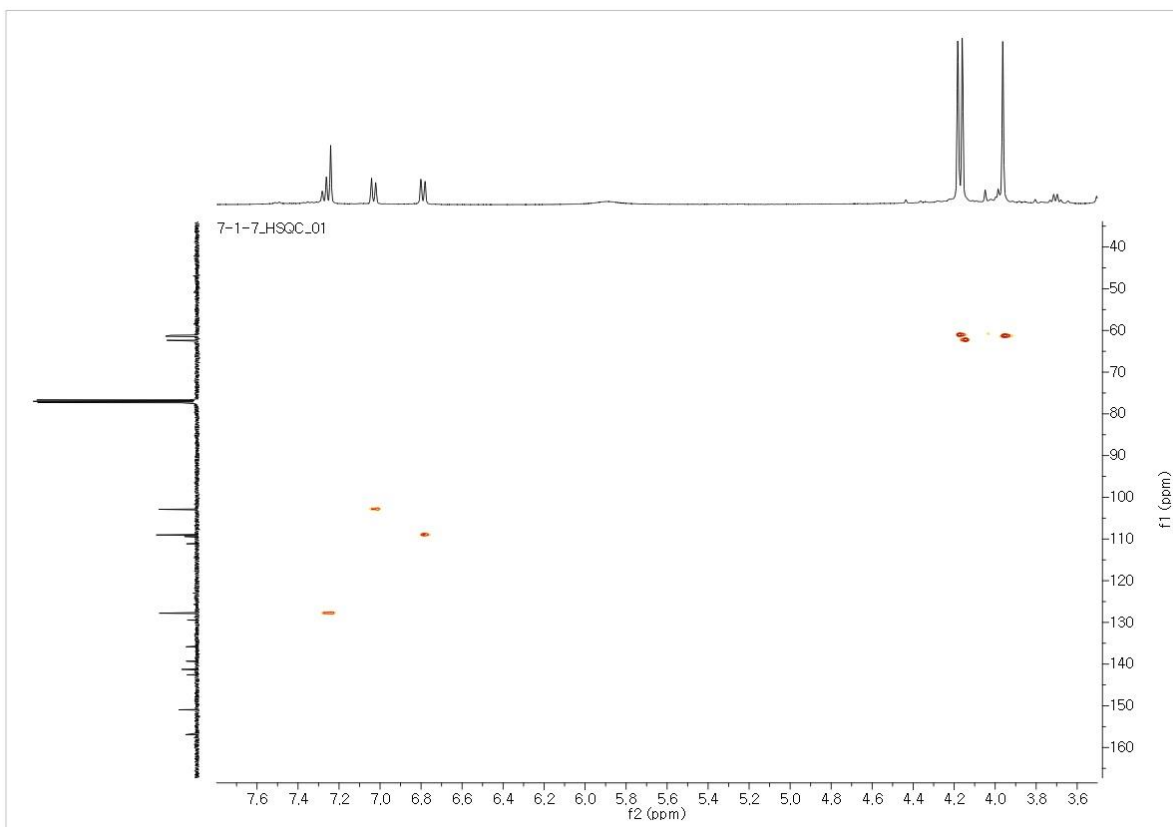
**S2:**  $^1\text{H-NMR}$  (400 MHz,  $\text{CDCl}_3$ ) Spectrum of Compound **7**



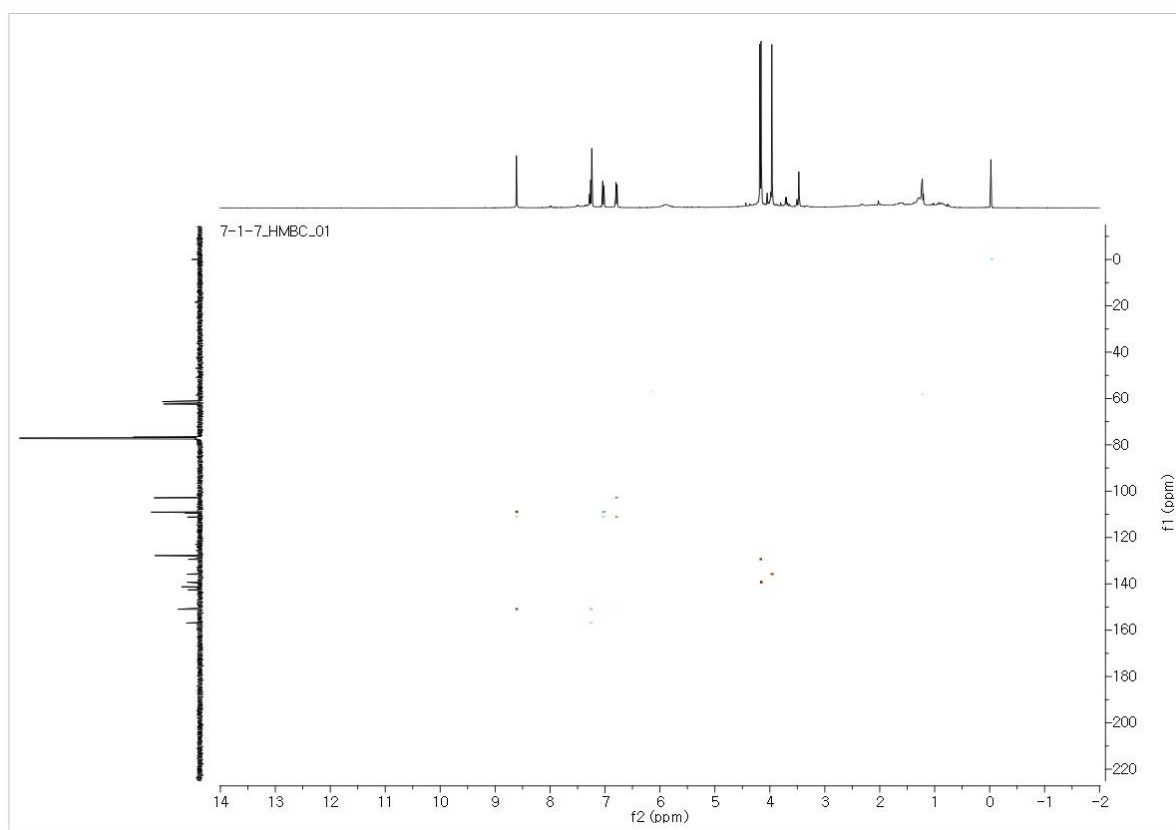
**S3:**  $^{13}\text{C}$ -NMR + DEPT (100 MHz,  $\text{CDCl}_3$ ) Spectrum of Compound **7**



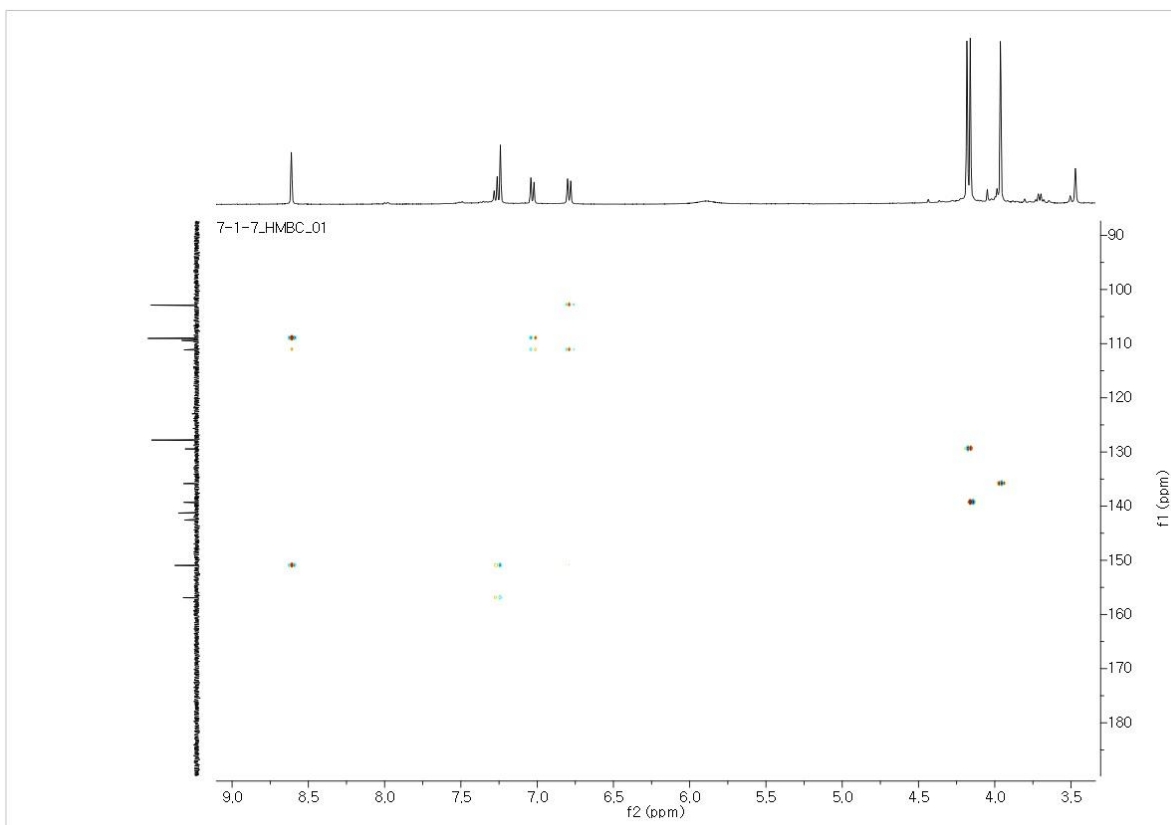
**S4:** HSQC Spectrum of Compound 7



**S5:** Expansion HSQC Spectrum of Compound **7**

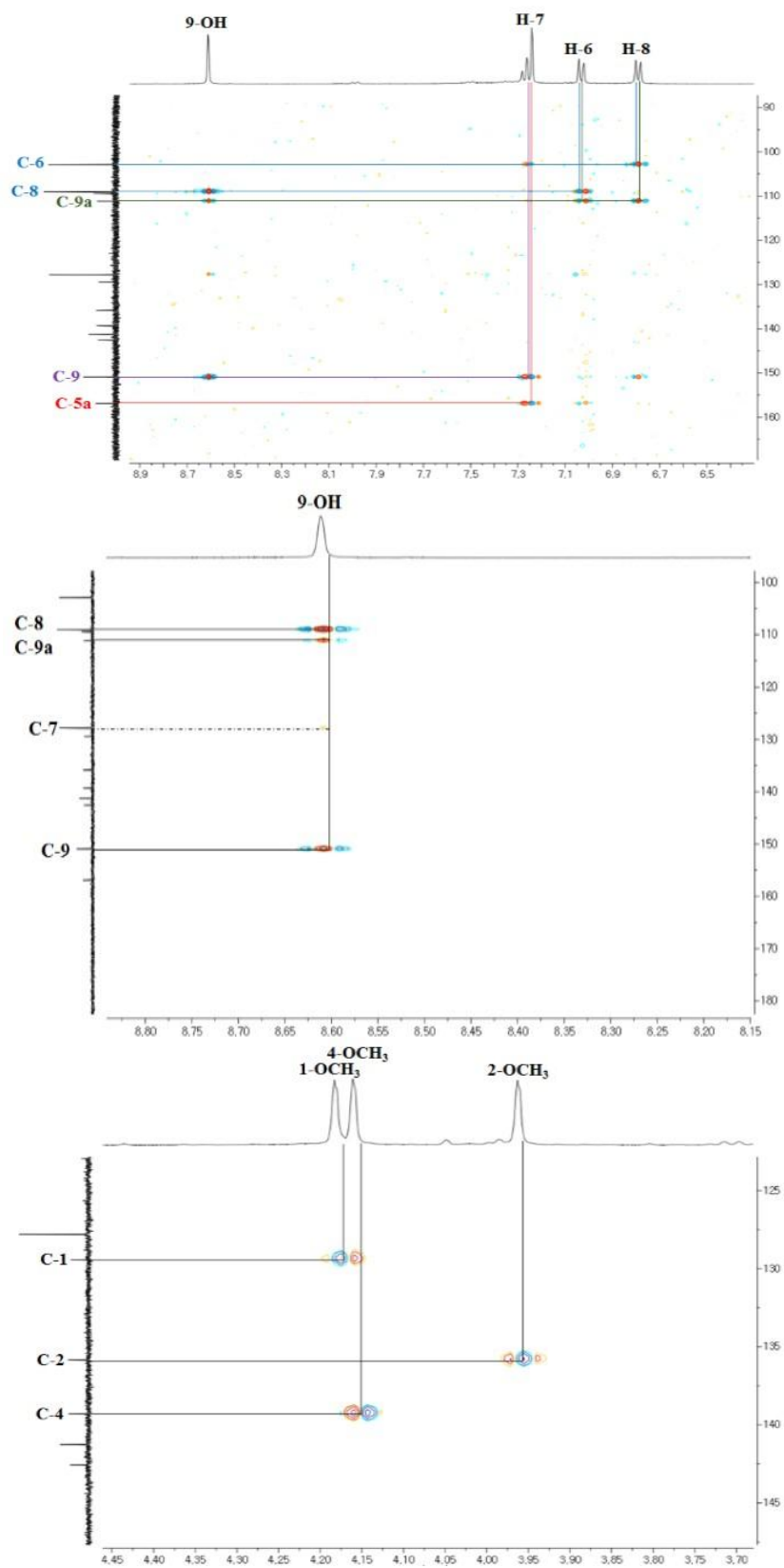


**S6:** HMBC Spectrum of Compound **7**



**S7:** Expansion HMBC Spectrum of Compound **7**





S8: HMBC patterns of Compound 7