

Supporting Information

Rec. Nat. Prod. 12:4 (2018) 317-322

Phillipsins A and B from *Zingiber philipsii* Theilade & Mood in Borneo

Takashi Kamada^{*1}, Julius Kulip¹, Kazuki Tani¹, Chin-Soon Phan¹,
Kishio Hatai² and Charles S. Vairappan¹

¹Laboratory of Natural Products Chemistry, Institute for Tropical Biology and Conservation,
Malaysia Sabah, 88400 Kota, Sabah, Malaysia

²Microbiology and Fish Disease Laboratory, Borneo Marine Research Institute, Malaysia
Sabah, 88400 Kota Sabah, Malaysia

Table of Contents

	Page
Figure S1: ¹ H NMR spectrum of phillipsin A (1) in CDCl ₃ (600 MHz)	2
Figure S2: ¹³ C NMR spectrum of phillipsin A (1) in CDCl ₃ (150 MHz)	3
Figure S3: HSQC spectrum of phillipsin A (1) in CDCl ₃	4
Figure S4: ¹ H- ¹ H COSY spectrum of phillipsin A (1) in CDCl ₃	5
Figure S5: HMBC spectrum of phillipsin A (1) in CDCl ₃	6
Figure S6: NOESY spectrum of phillipsin A (1) in CDCl ₃	7
Figure S7: HR-ESI-MS spectrum of phillipsin A (1)	8
Figure S8: ¹ H NMR spectrum of phillipsin B (2) in CDCl ₃ (600 MHz)	9
Figure S9: ¹³ C NMR spectrum of phillipsin B (2) in CDCl ₃ (150 MHz)	10
Figure S10: HSQC spectrum of phillipsin B (2) in CDCl ₃	11
Figure S11: ¹ H- ¹ H COSY spectrum of phillipsin B (2) in CDCl ₃	12
Figure S12: HMBC spectrum of phillipsin B (2) in CDCl ₃	13
Figure S13: NOESY spectrum of phillipsin B (2) in CDCl ₃	14
Figure S14: HR-ESI-MS spectrum of phillipsin B (2)	15

* Corresponding author: E-Mail: takashi.kamada@ums.edu.my; Phone:+60-88-320-000/ 2370

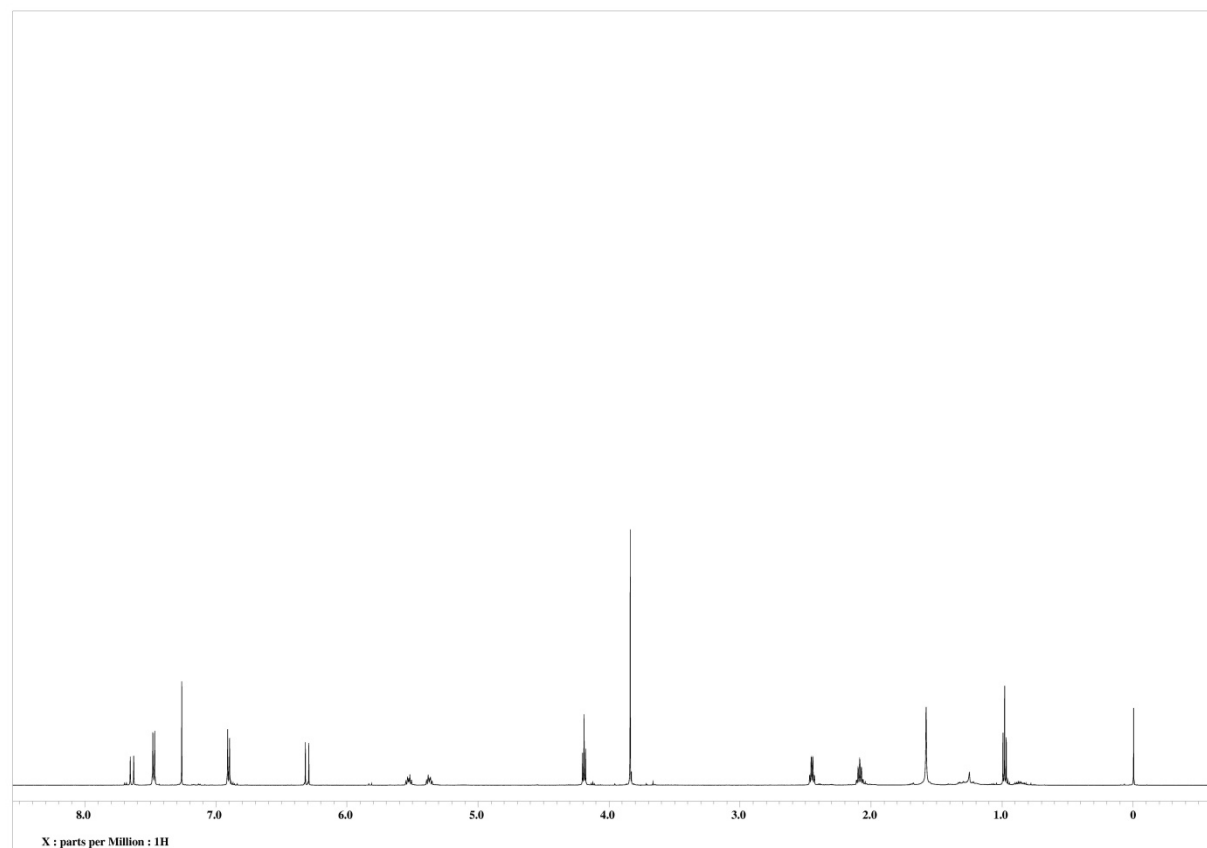


Figure S1: ^1H NMR spectrum of phillipsin A (**1**) in CDCl_3 (600 MHz).

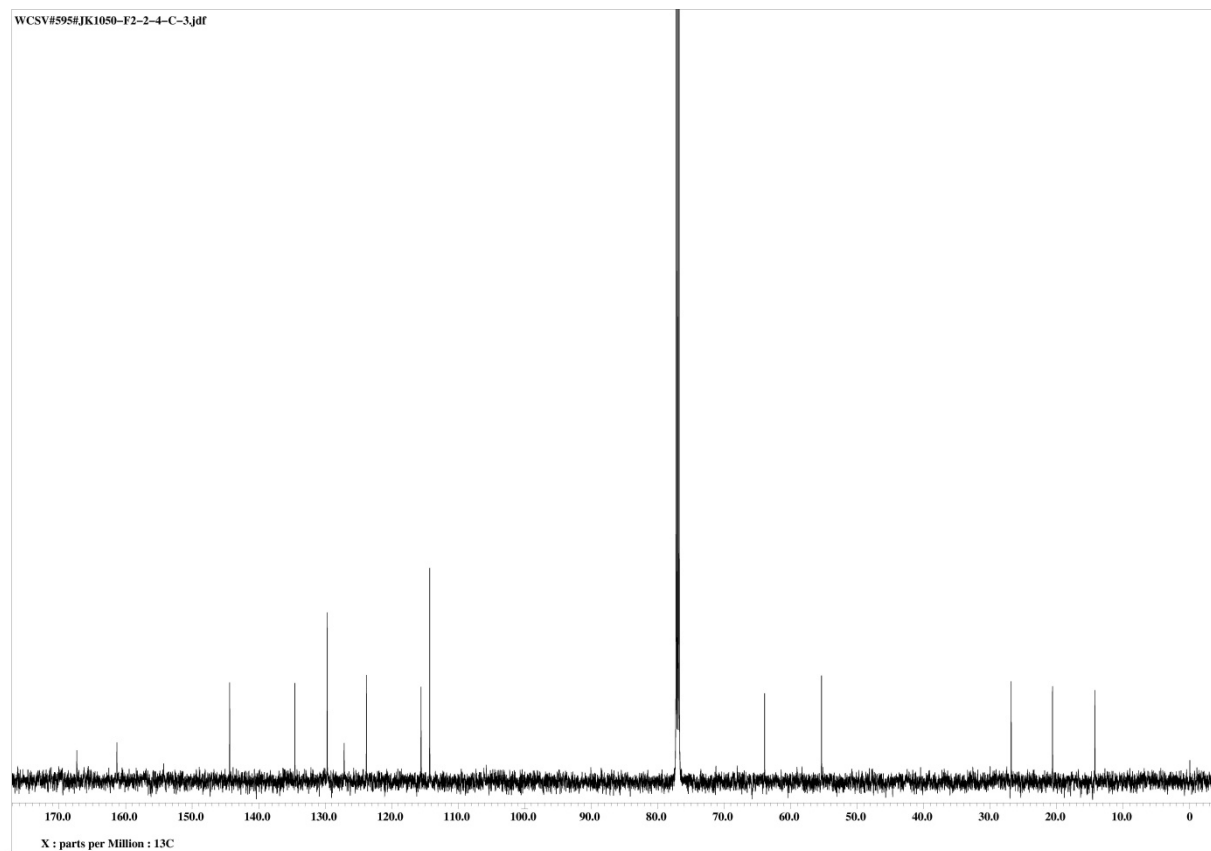


Figure S2: ^{13}C NMR spectrum of phillipsin A (**1**) in CDCl_3 (150 MHz).

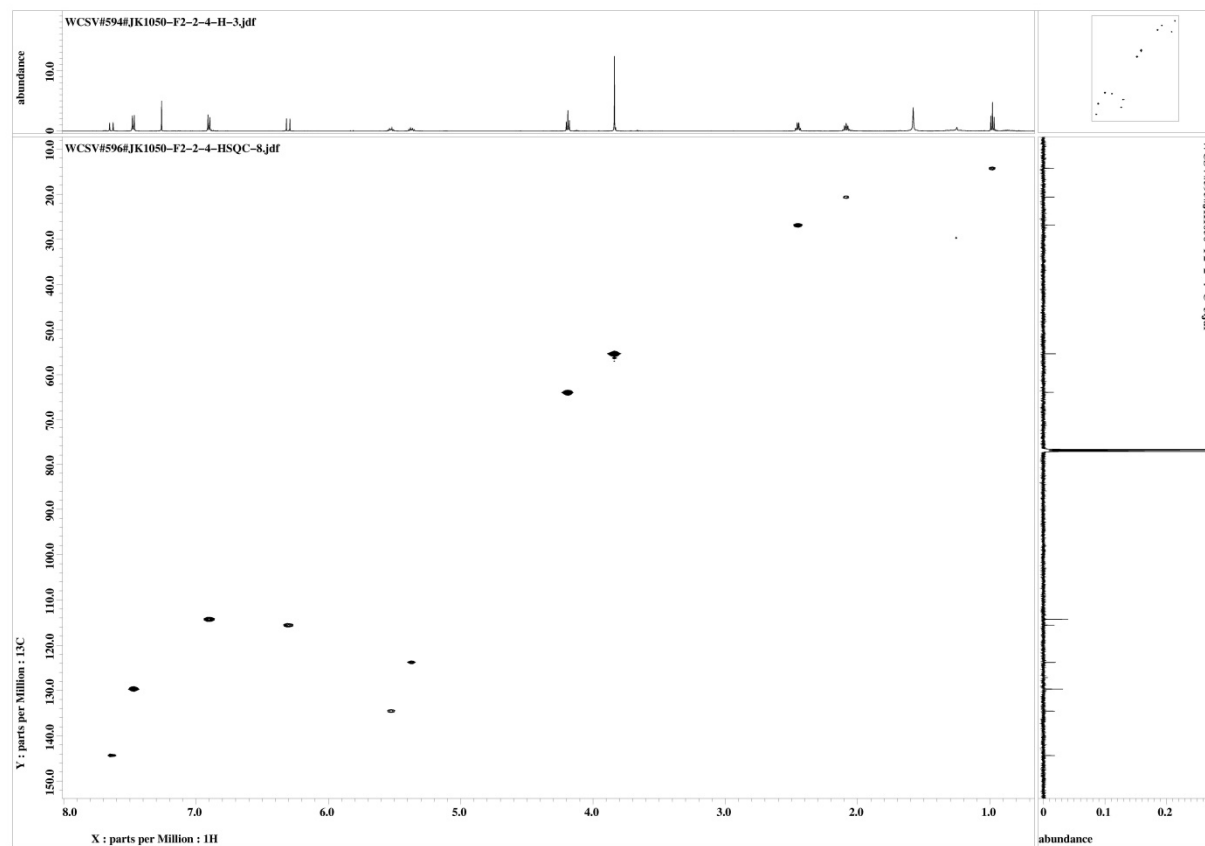


Figure S3: HSQC spectrum of phillipsin A (1) in CDCl₃.

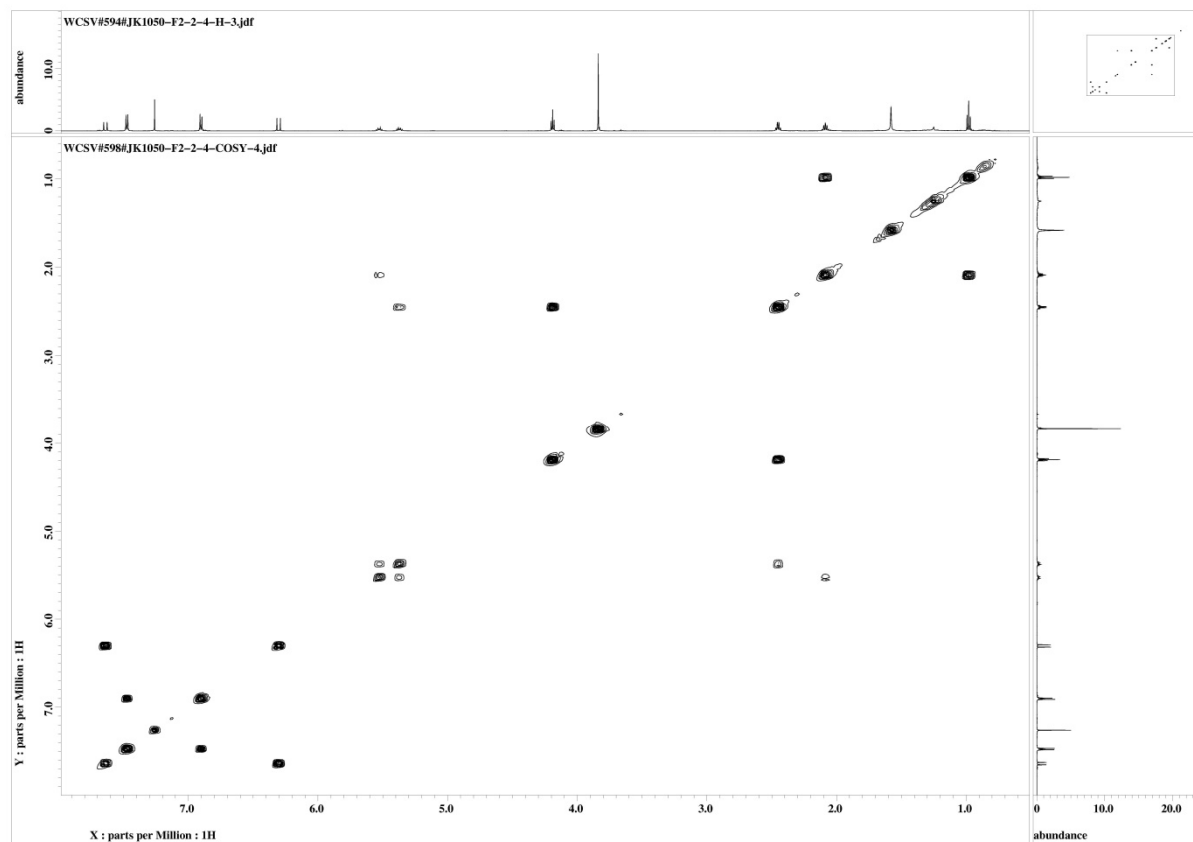


Figure S4: ^1H - ^1H COSY spectrum of phillipsin A (**1**) in CDCl_3 .

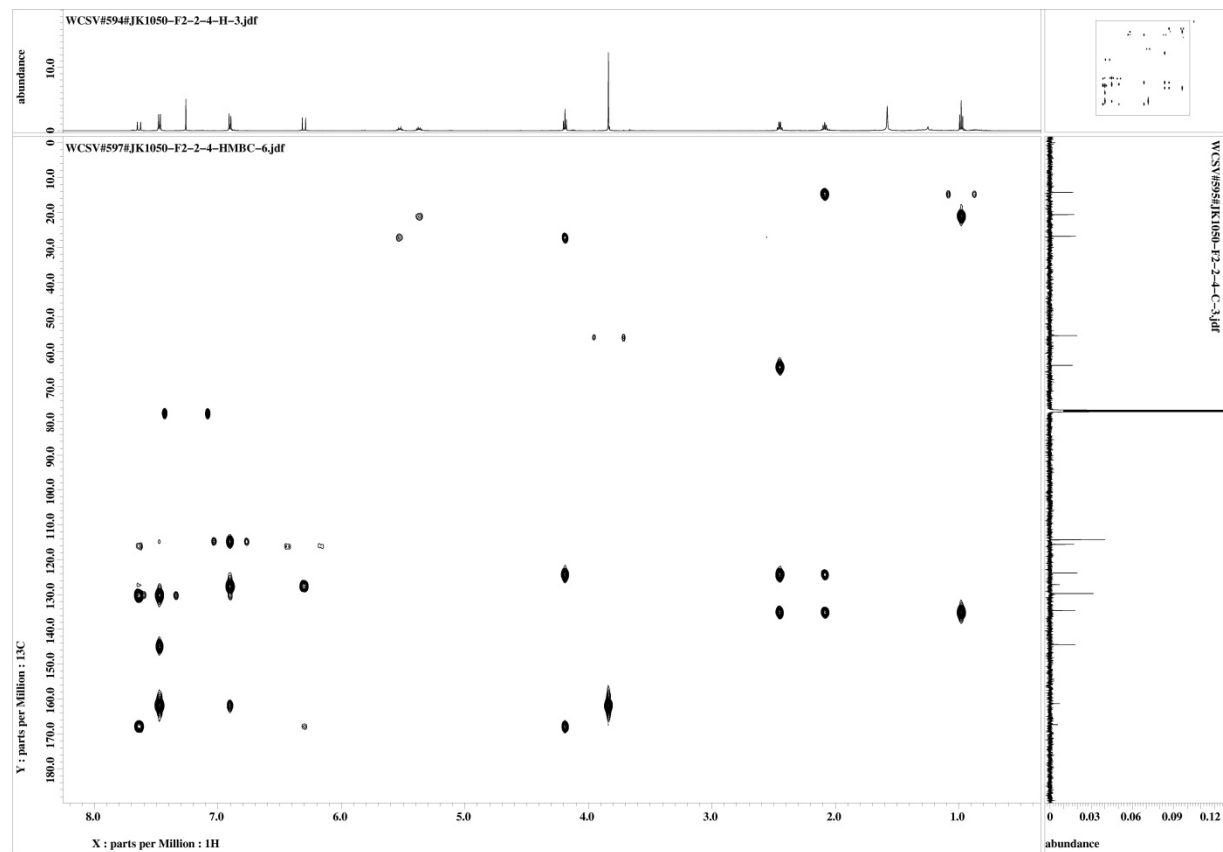


Figure S5: HMBC spectrum of phillipsin A (1) in CDCl₃.

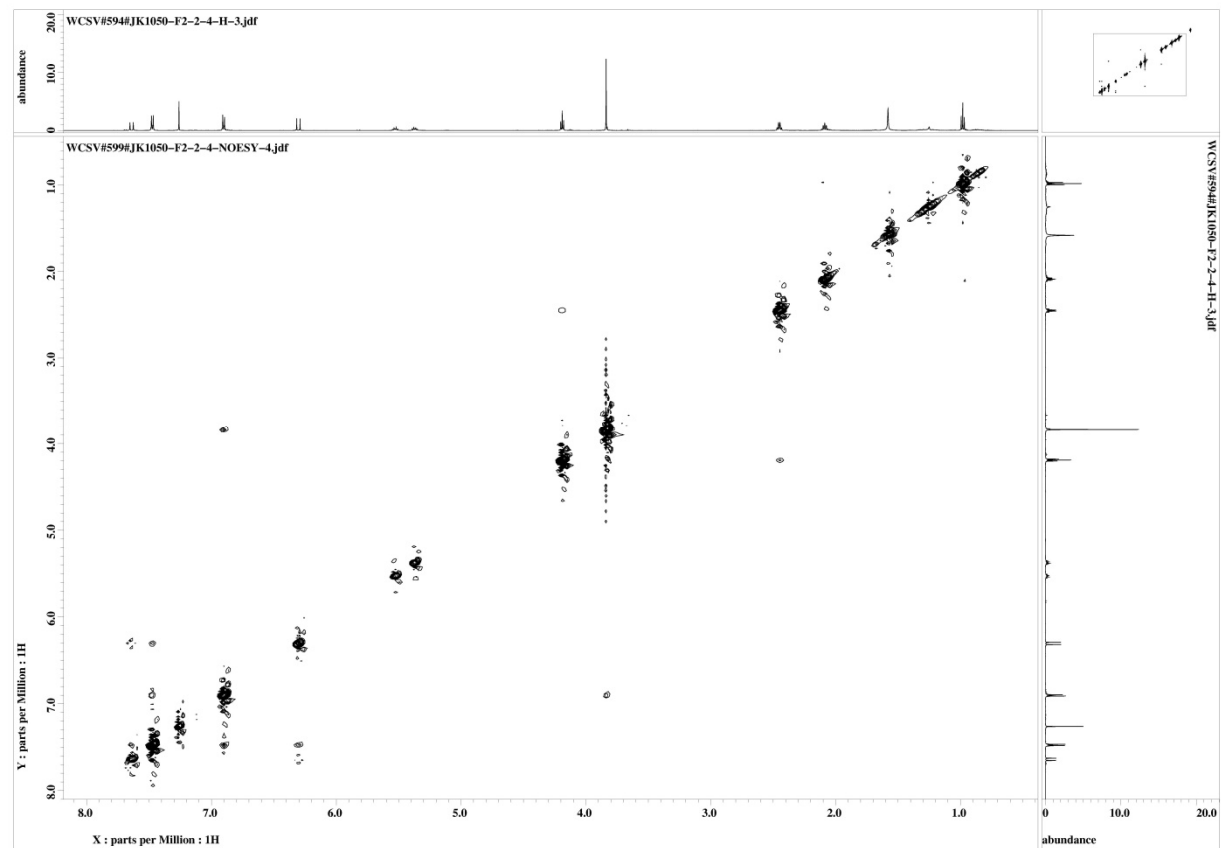


Figure S6: NOESY spectrum of phillipsin A (1) in CDCl₃.

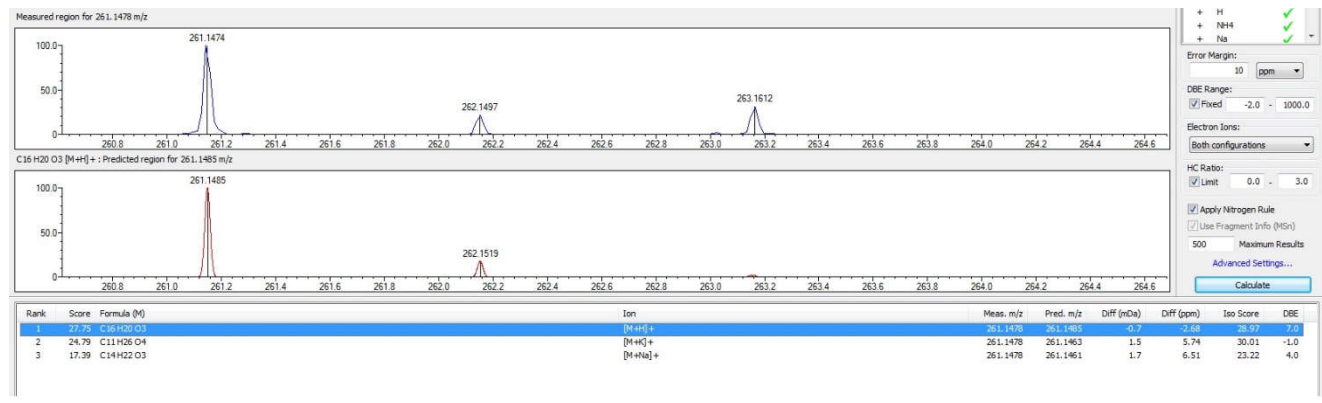
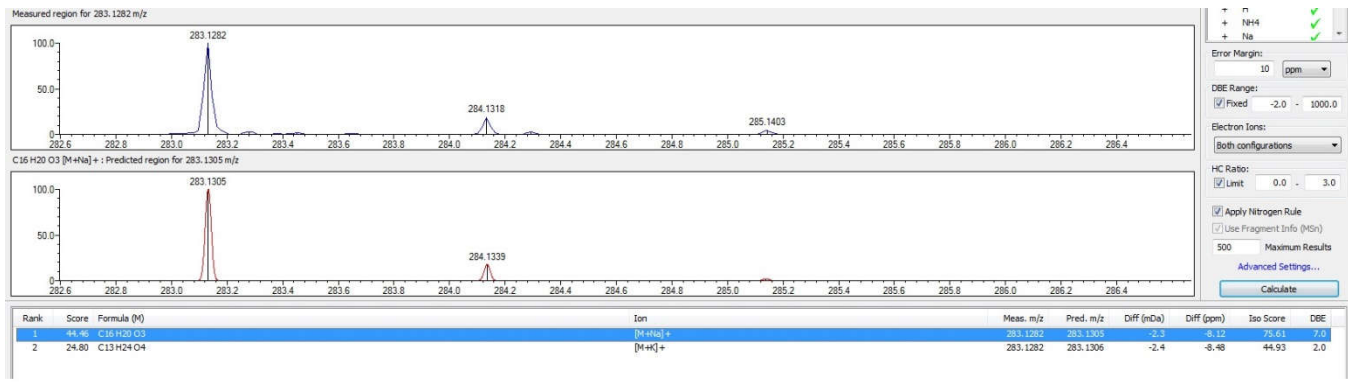


Figure S7: HRESIMS spectrum of phillipsin A (1).

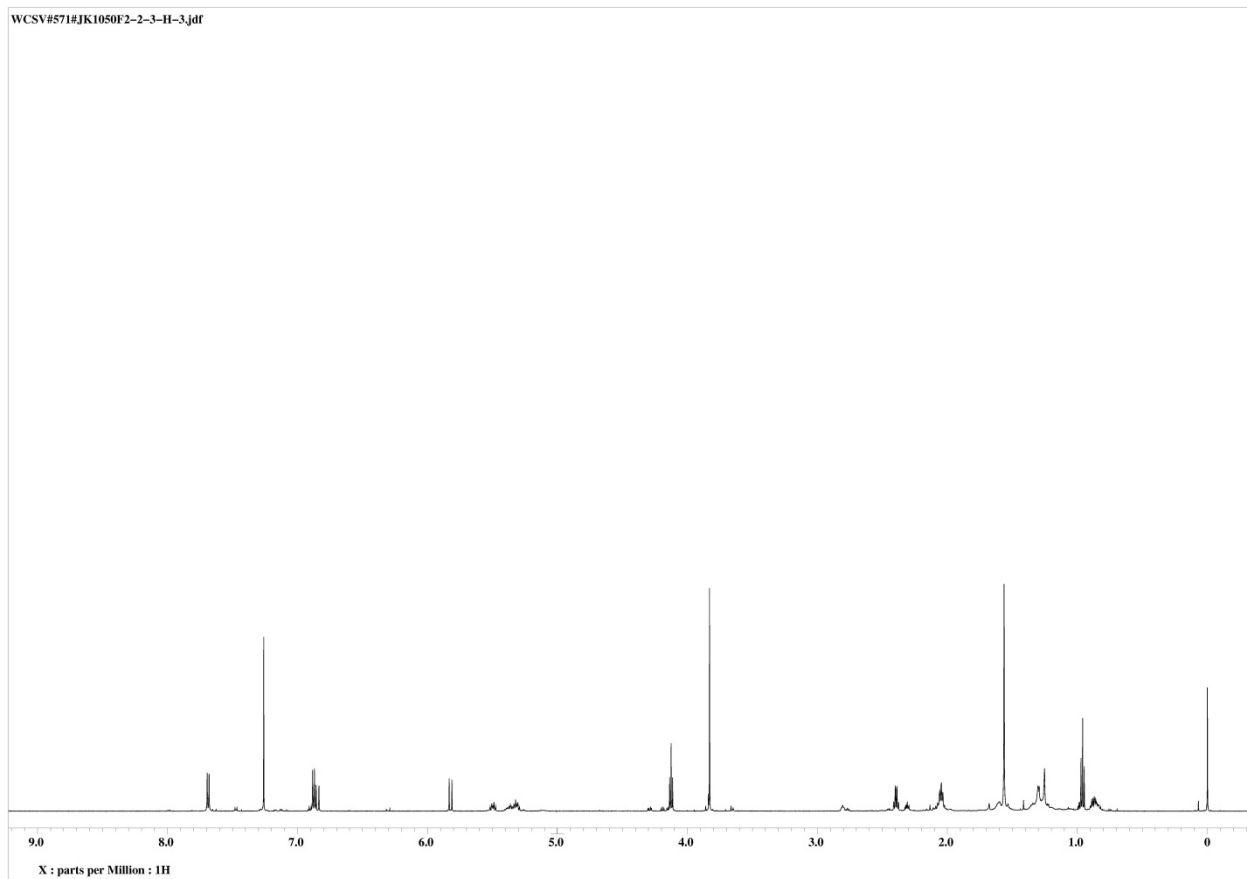


Figure S8: ^1H NMR spectrum of phillipsin B (**2**) in CDCl_3 (600 MHz).

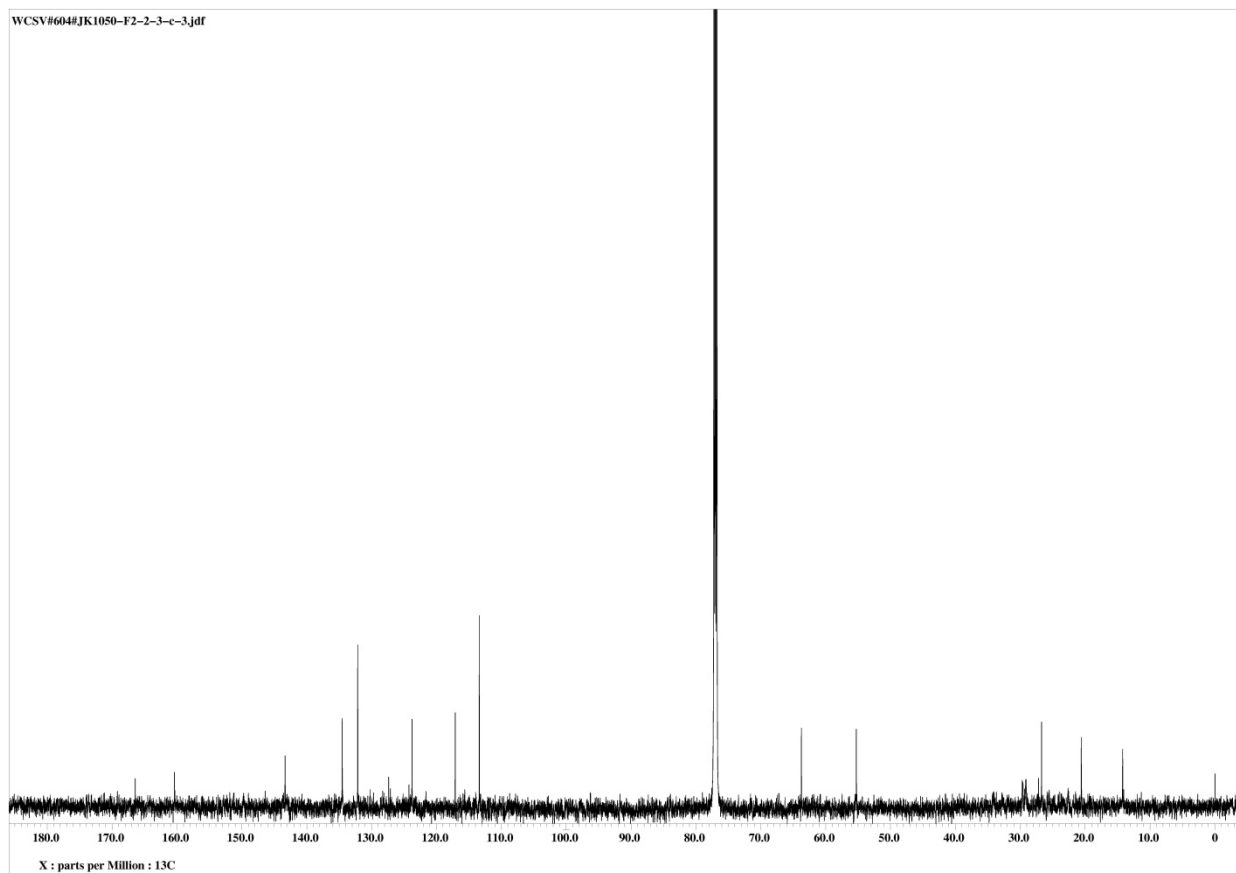


Figure S9: ^{13}C NMR spectrum of phillipsin B (**2**) in CDCl_3 (150 MHz).

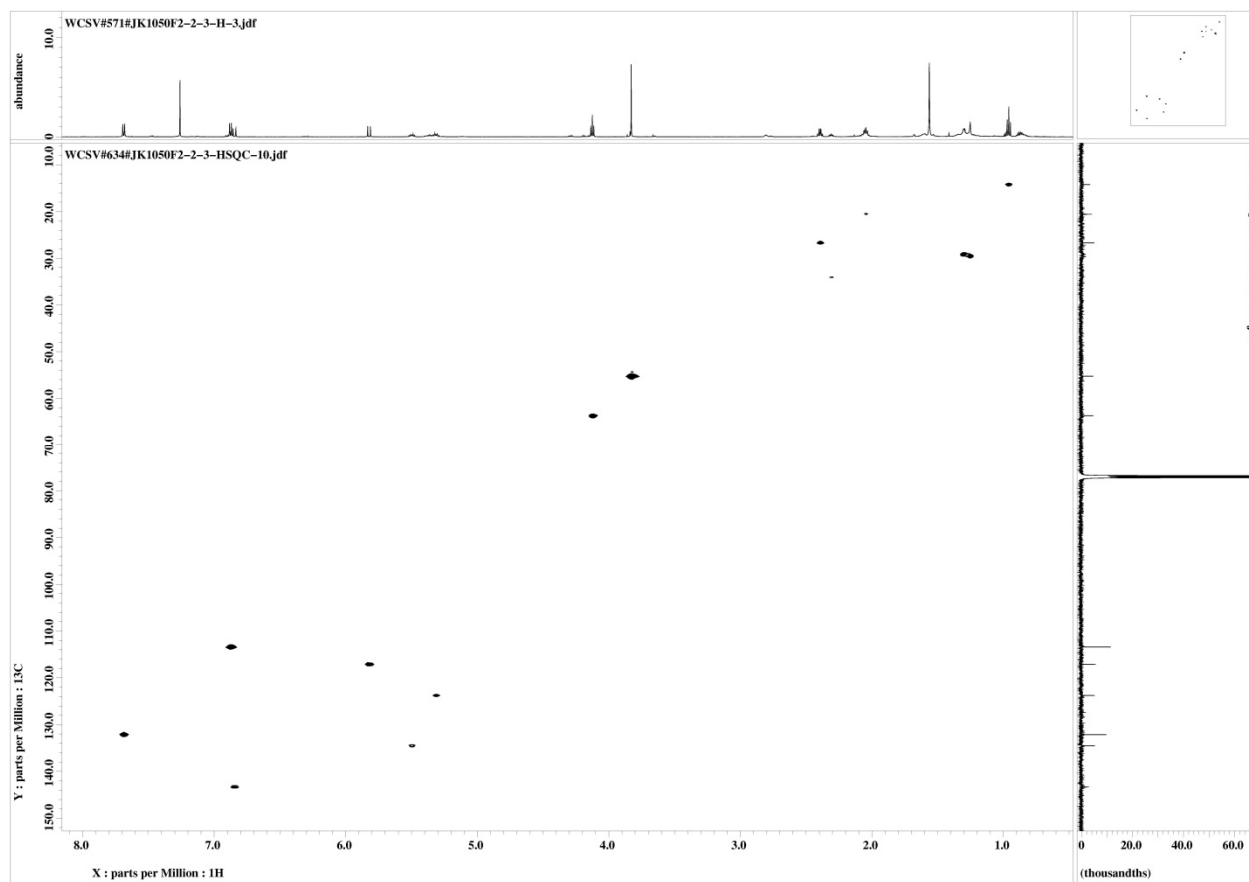


Figure S10: HSQC spectrum of phillipsin B (2) in CDCl₃.

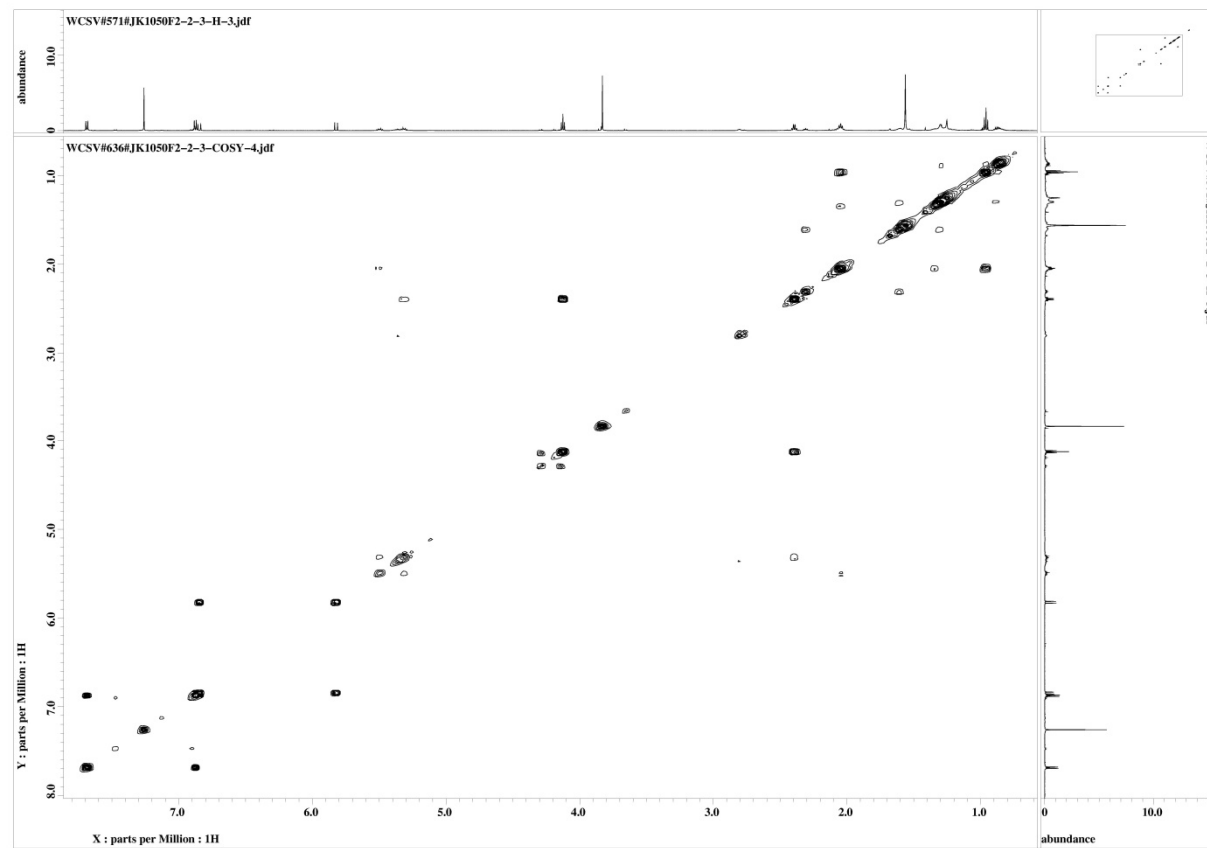


Figure S11: ^1H - ^1H COSY spectrum of phillipsin B (**2**) in CDCl_3 .

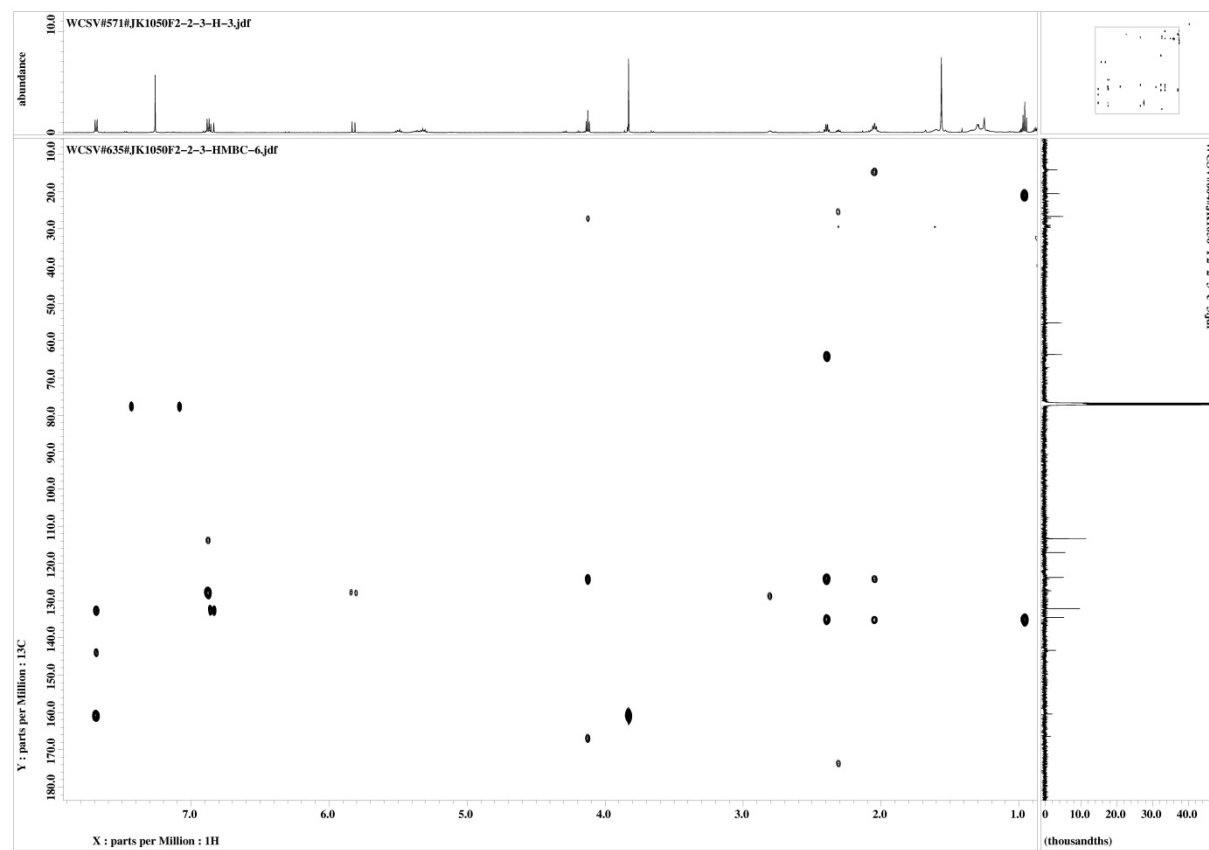


Figure S12: HMBC spectrum of phillipsin B (2) in CDCl₃.

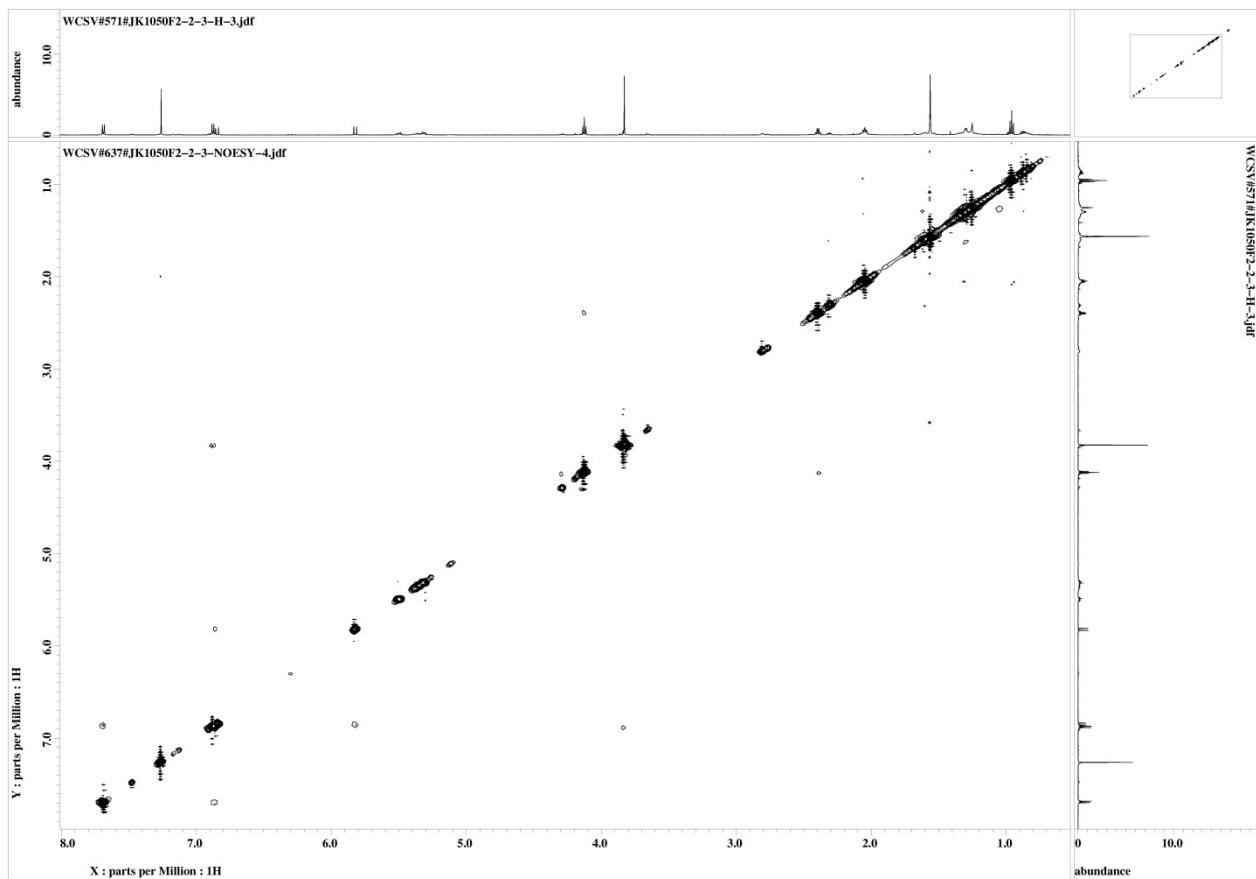


Figure S13: NOESY spectrum of phillipsin B (**2**) in CDCl_3 .

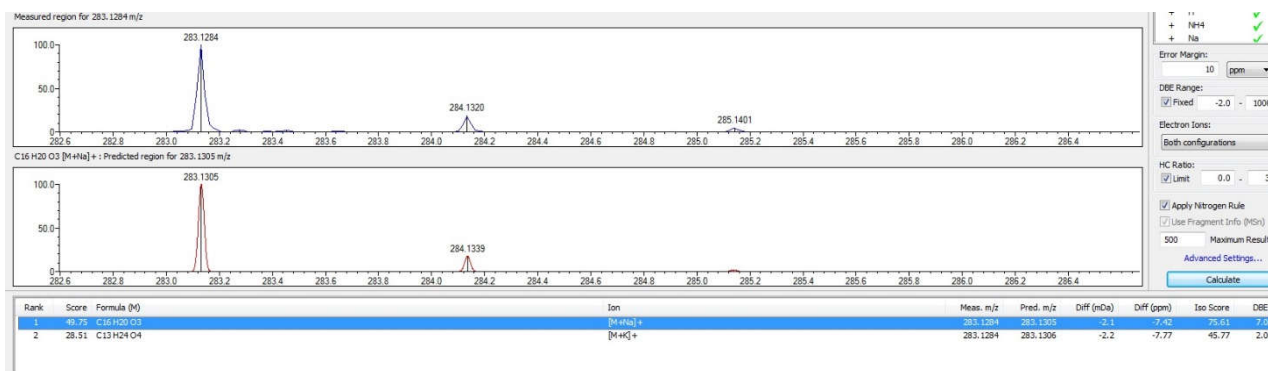
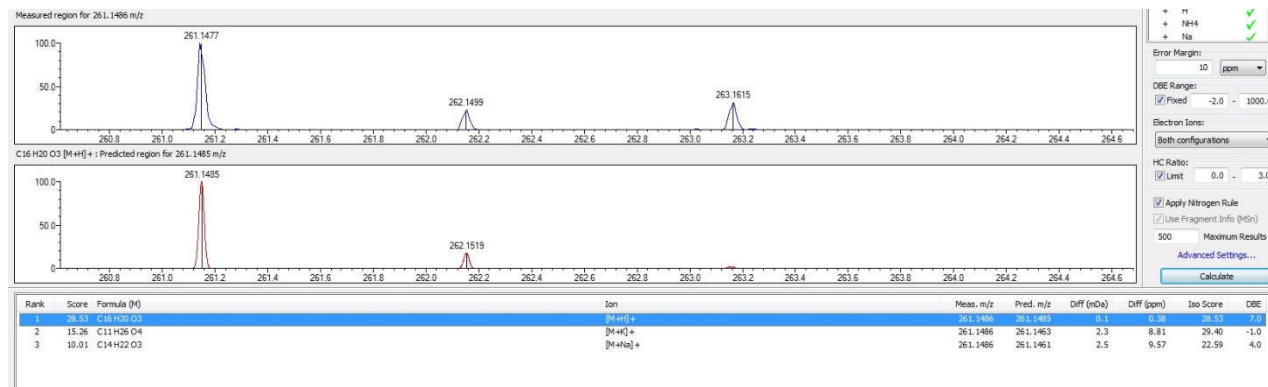


Figure S14: HRESIMS spectrum of phillipsin B (2).