

## Supporting Information

*J.Chem.Metrol.* 13:2 (2019) XX-XX

### Determination of bromate in bottled water marketed in Iran by ion chromatography

Sima Djam<sup>1</sup>, Mostafa Najafi<sup>1</sup>, Seyyed Hamid Ahmadi<sup>2</sup> and  
Shahram Shoeibi<sup>3\*</sup>

<sup>1</sup>*Department of Chemistry, South Tehran Branch, Islamic Azad University, Tehran, Iran*

<sup>2</sup>*Department of Environmental Analytical Chemistry, Chemistry & Chemical Engineering Research Center of Iran, Tehran, Iran*

<sup>3</sup>*Food and Drug Laboratory Research Center (FDLRC), Food and Drug Organization (FDO), Ministry of Health and Medical Education, Tehran, Iran*

---

Table of Contents	Page
Table S1. Optimized parameters of ion chromatography for bromate analysis	2
Figure S1 : Calibration curve of BrO <sub>3</sub> <sup>-</sup> using IC (5-62.5 µg/L )	2

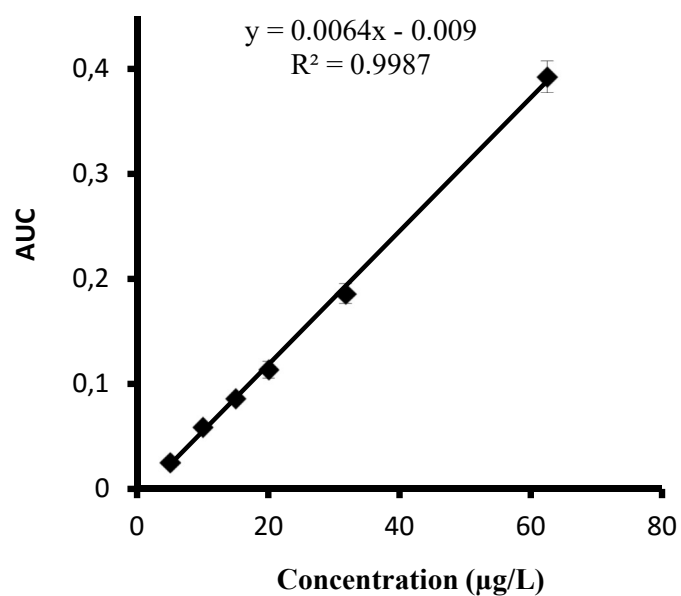
---

---

\* Corresponding author: E-Mail: [sh.shoeibi@fda.gov.ir](mailto:sh.shoeibi@fda.gov.ir)

**Table S1.** Optimized parameters of ion chromatography for bromate analysis.

Column	: Dionex AS23/ Guard AG23
Mobile phase	: Na <sub>2</sub> CO <sub>3</sub> /NaHCO <sub>3</sub> 4.2/1 mM
Flow rate	: 1.1 mL/min
Column temperature	: ambient temperature
Loop volume	: 20 µL
Detector	: Conductivity Metrohm 732
Retention time	: 6.8 min



**Figure S1 :** Calibration curve of BrO<sub>3</sub><sup>-</sup> using IC (5-62.5 µg/L )