

Supporting Information

J.Chem.Metrol. 13:2 (2019) 47-52

Determination of bromate in bottled water marketed in Iran by ion chromatography

Sima Djam¹, Mostafa Najafi¹, Seyyed Hamid Ahmadi² and
Shahram Shoeibi^{3*}

¹*Department of Chemistry, South Tehran Branch, Islamic Azad University, Tehran, Iran*

²*Department of Environmental Analytical Chemistry, Chemistry & Chemical Engineering Research
Center of Iran, Tehran, Iran*

³*Food and Drug Laboratory Research Center (FDLRC), Food and Drug Organization (FDO),
Ministry of Health and Medical Education, Tehran, Iran*

Table of Contents	Page
Table S1. Optimized parameters of ion chromatography for bromate analysis	2
Figure S1 : Calibration curve of BrO ₃ ⁻ using IC (5-62.5 µg/L)	2

* Corresponding author: E-Mail: sh.shoeibi@fda.gov.ir

Table S1. Optimized parameters of ion chromatography for bromate analysis.

Column	: Dionex AS23/ Guard AG23
Mobile phase	: Na ₂ CO ₃ /NaHCO ₃ 4.2/1 mM
Flow rate	: 1.1 mL/min
Column temperature	: ambient temperature
Loop volume	: 20 µL
Detector	: Conductivity Metrohm 732
Retention time	: 6.8 min

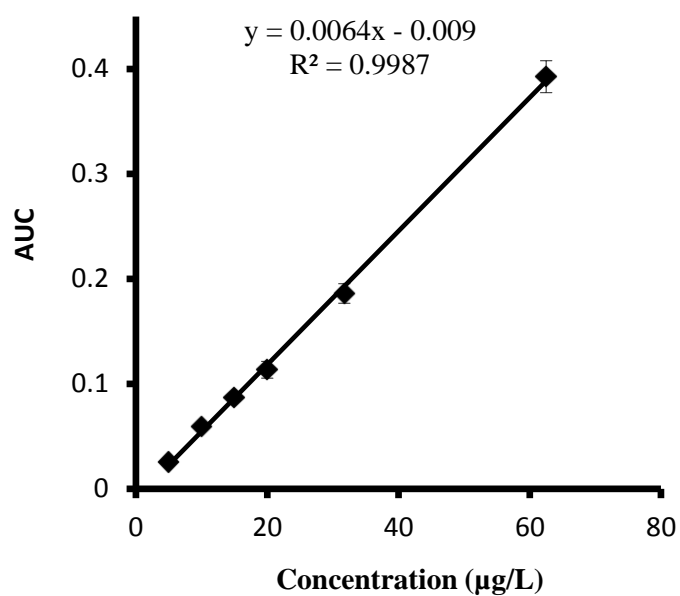


Figure S1 : Calibration curve of BrO₃⁻ using IC (5-62.5 µg/L)