

## Supporting Information

*Rec. Nat. Prod.* 14:4 (2020) 297-300

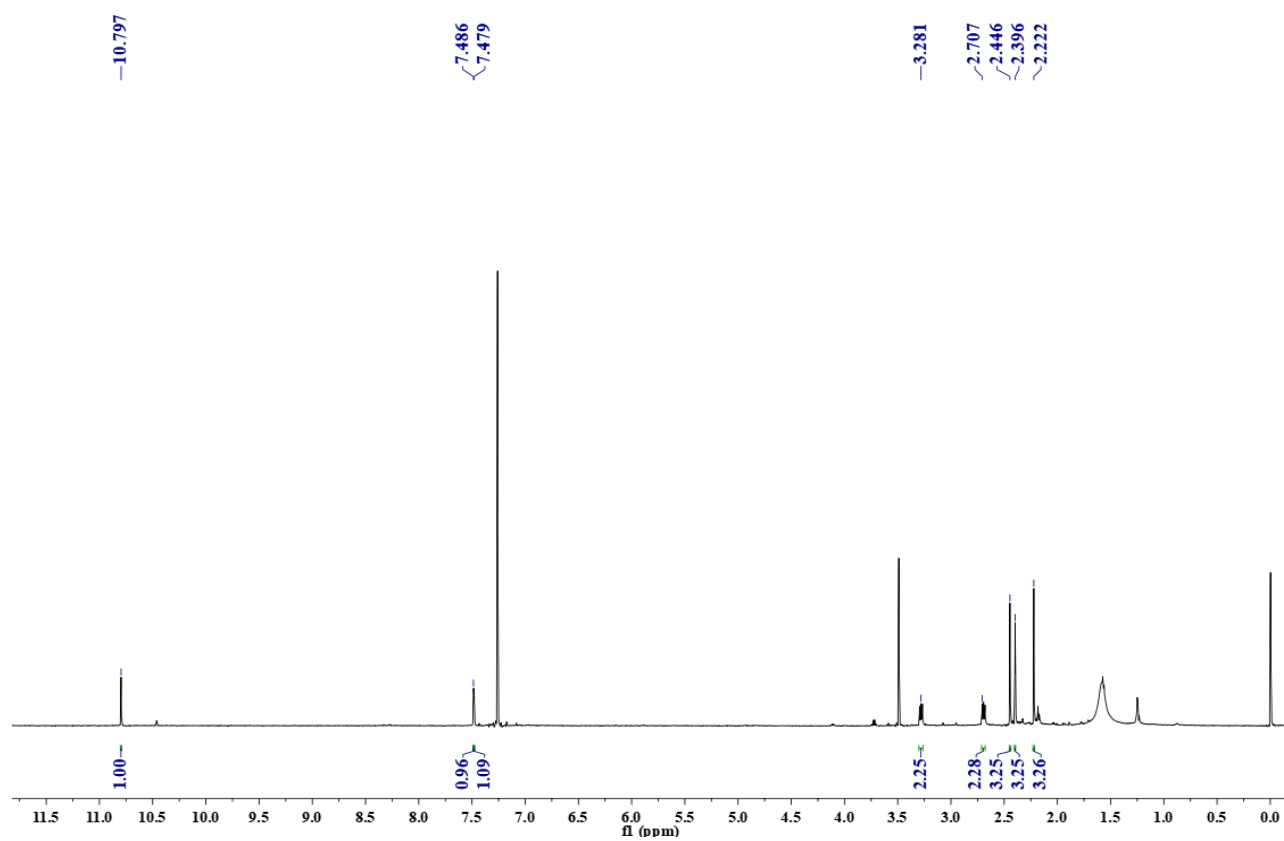
### A New 4,5-Secofurancadinene from the Rhizomes of

### *Curcuma kwangsiensis*

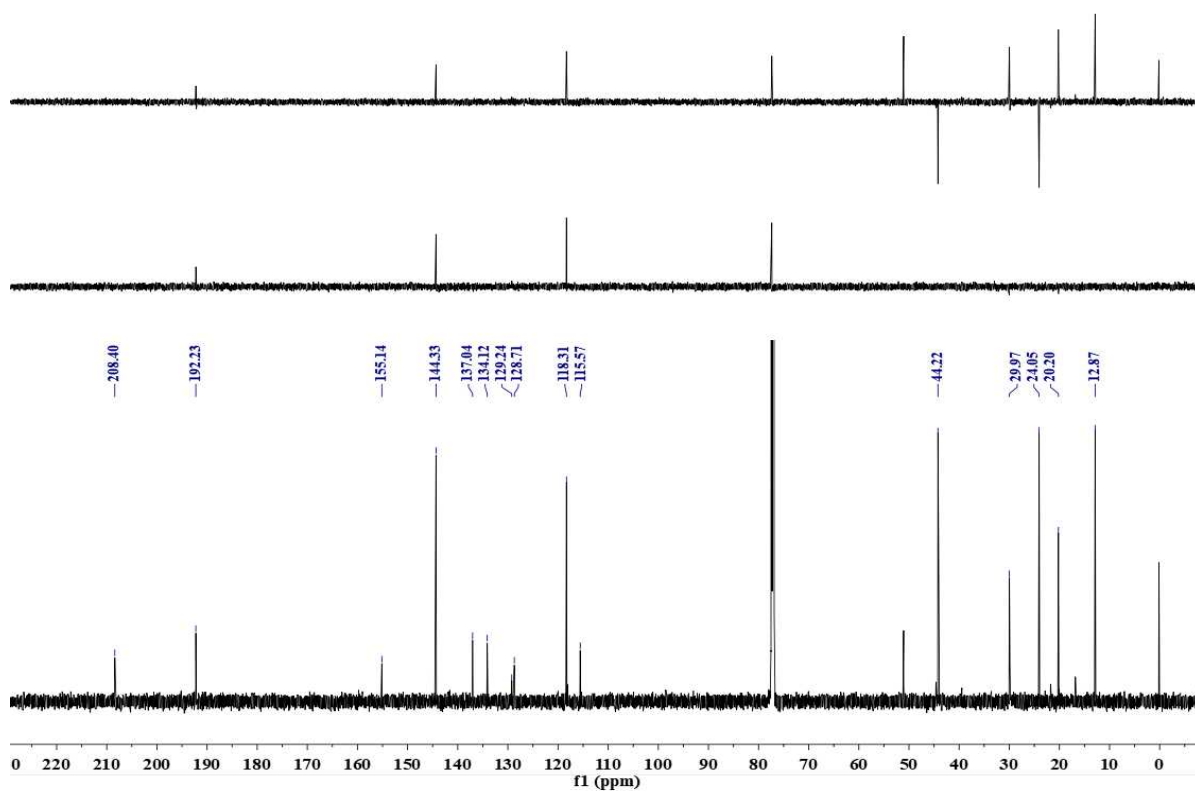
**Weifeng Dai, Lianli Zhang, Yanfang Liu and Mi Zhang\***

*Faculty of Life Science and Technology, Kunming University of Science and Technology, Kunming  
650500, China*

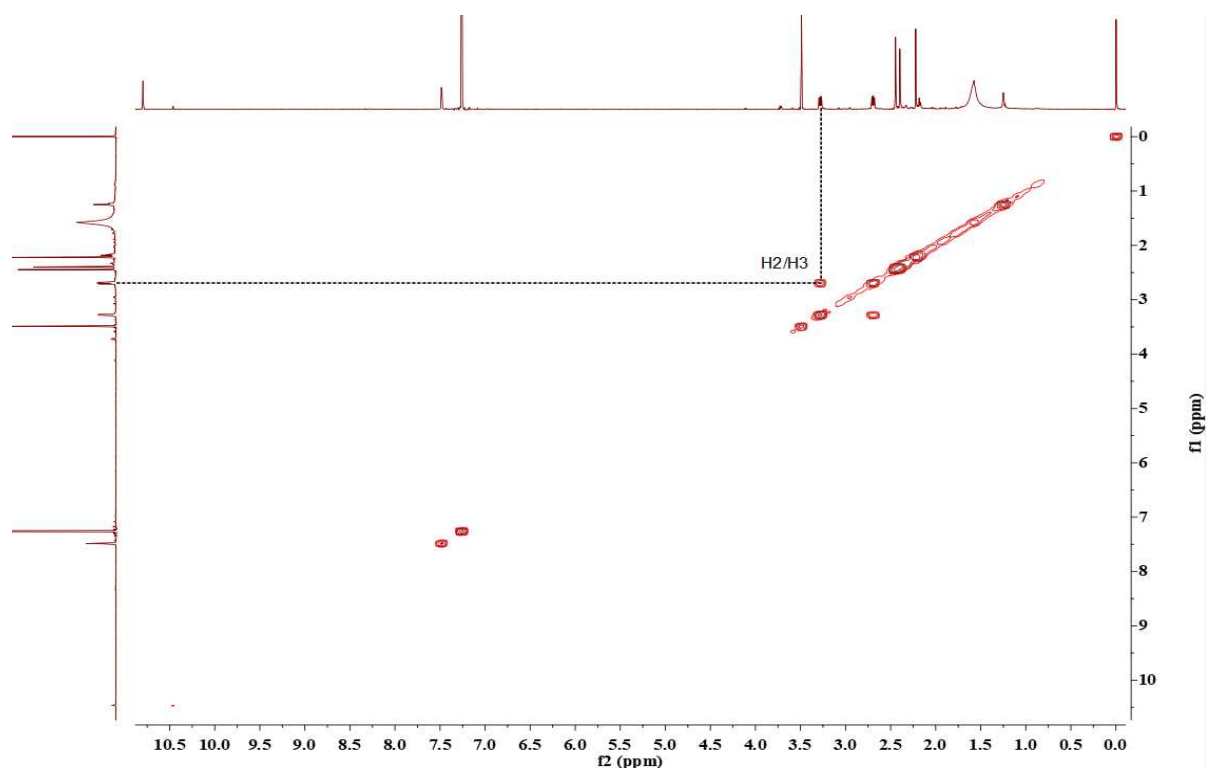
<b>Table of Contents</b>	<b>Page</b>
<b>Figure S1:</b> <sup>1</sup> H-NMR (600 MHz, CDCl <sub>3</sub> ) Spectrum of compound <b>1</b> in CDCl <sub>3</sub> .	2
<b>Figure S2:</b> <sup>13</sup> C-NMR and DEPT (150 MHz, CDCl <sub>3</sub> ) Spectra of compound <b>1</b> in CDCl <sub>3</sub> .	3
<b>Figure S3:</b> <sup>1</sup> H- <sup>1</sup> H Cosy Spectrum of compound <b>1</b> in CDCl <sub>3</sub> .	4
<b>Figure S4:</b> HSQC Spectrum of compound <b>1</b> in CDCl <sub>3</sub> .	5
<b>Figure S5:</b> Enlarged HSQC Spectrum of compound <b>1</b> in CDCl <sub>3</sub> (From δ <sub>H</sub> 6.5 ppm to δ <sub>H</sub> 8.4 ppm).	6
<b>Figure S6:</b> HMBC Spectrum of compound <b>1</b> in CDCl <sub>3</sub> .	7
<b>Figure S7:</b> HRESIMS of compound <b>1</b> in MeOH.	8



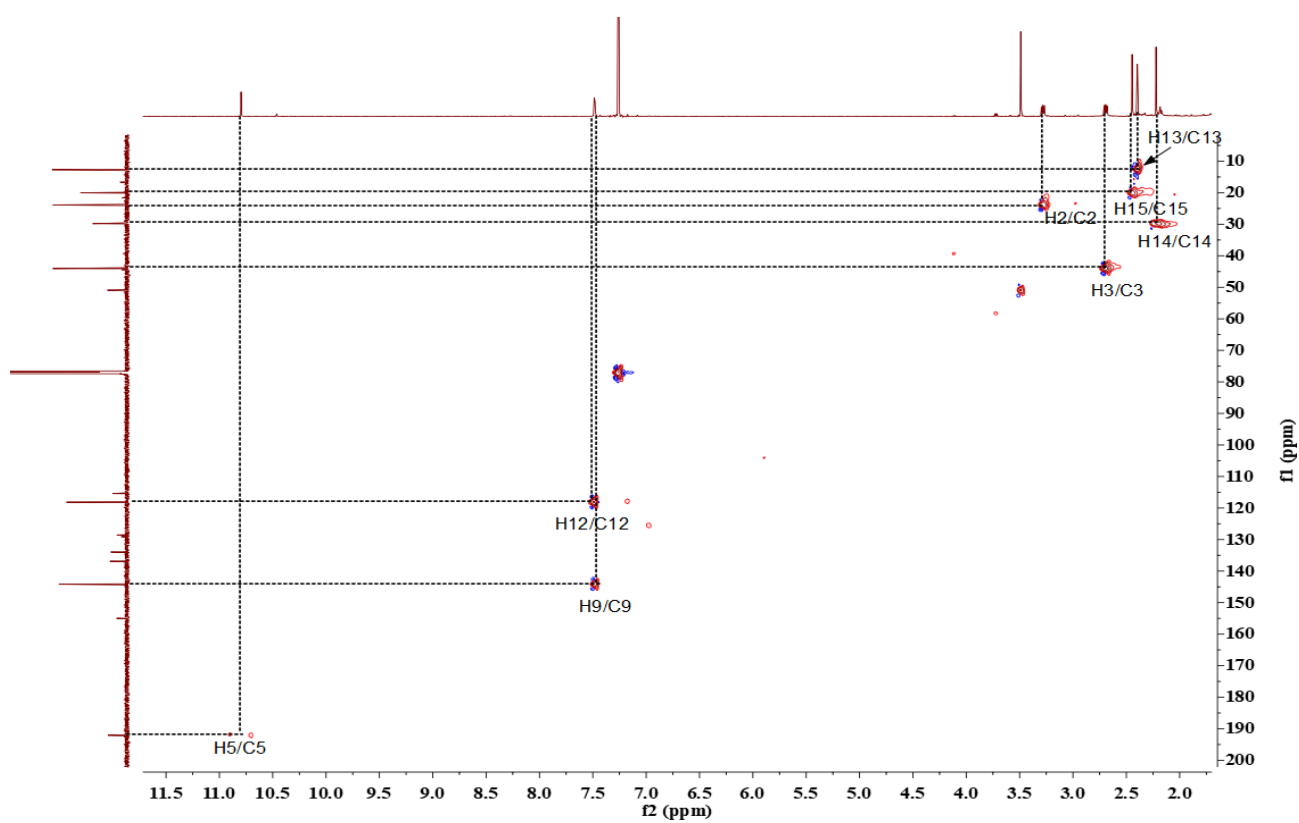
**Figure S1:**  $^1\text{H-NMR}$  (600 MHz,  $\text{CDCl}_3$ ) Spectrum of compound **1** in  $\text{CDCl}_3$ .



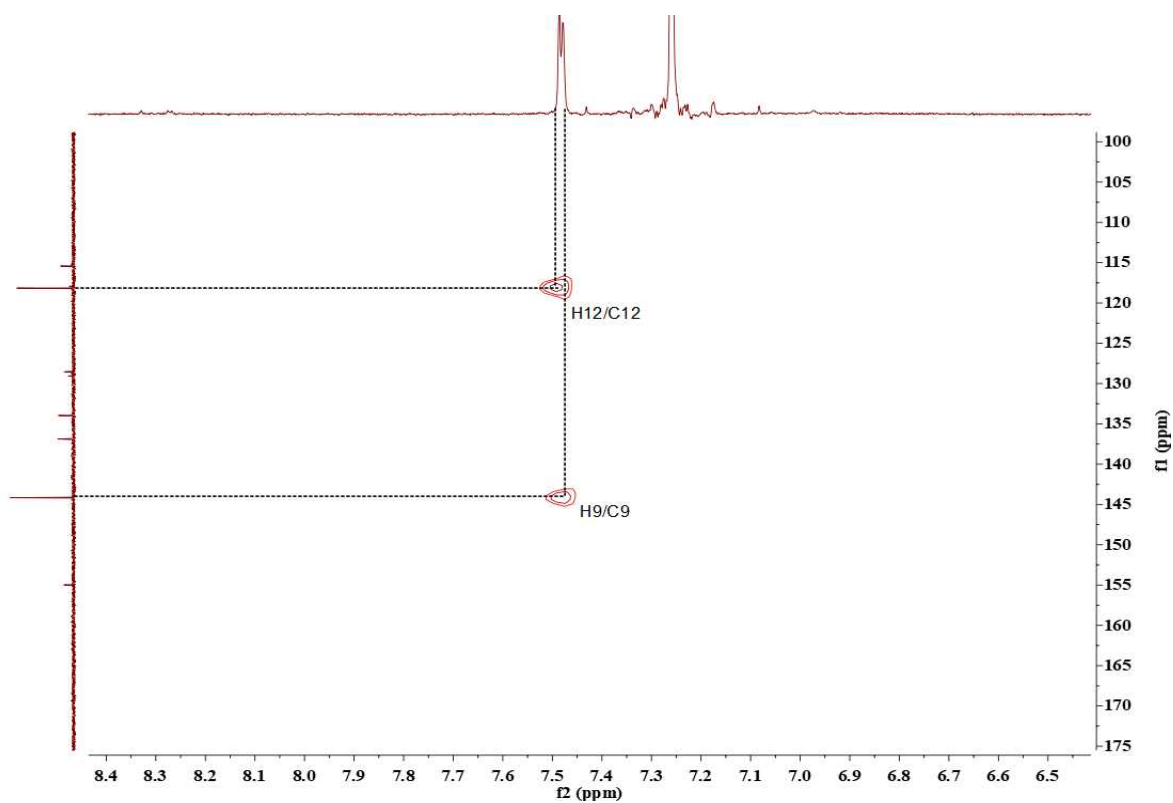
**Figure S2:** <sup>13</sup>C-NMR and DEPT (150 MHz, CDCl<sub>3</sub>) Spectra of compound **1** in CDCl<sub>3</sub>.



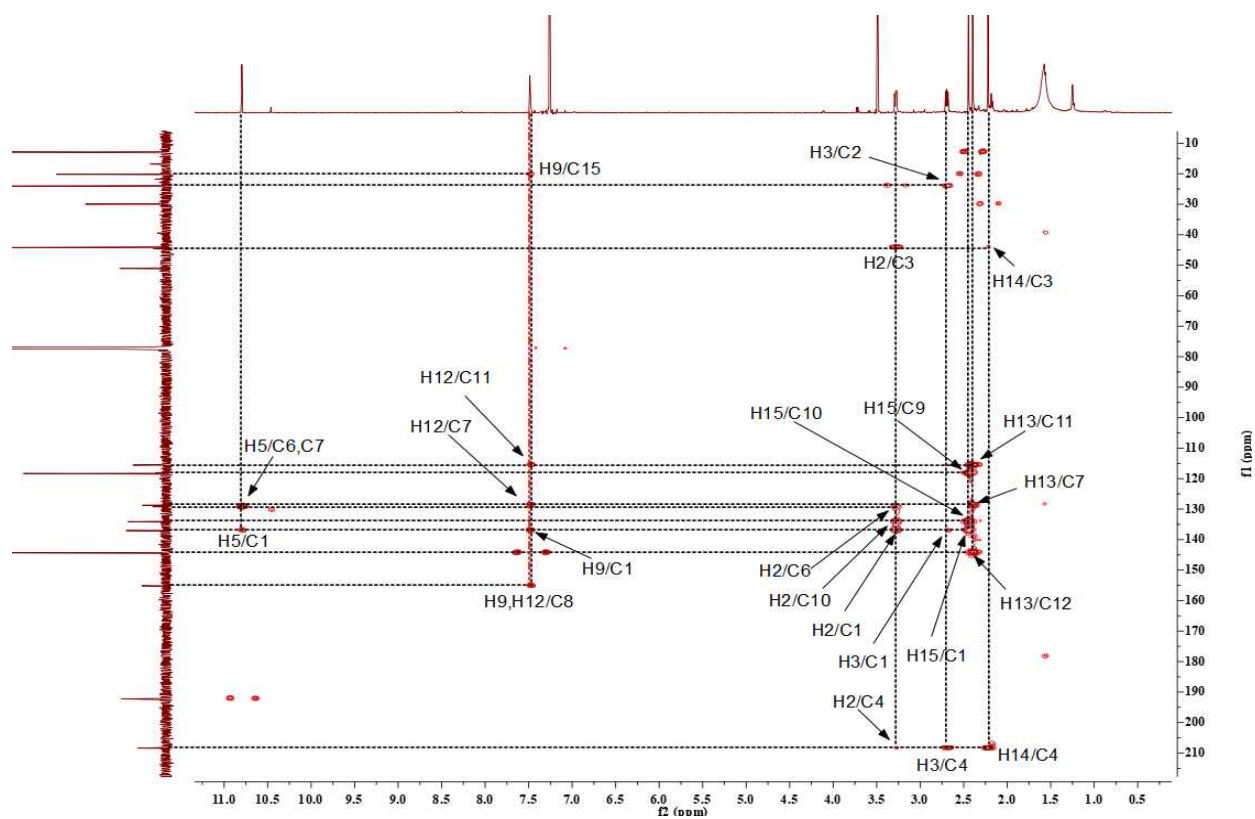
**Figure S3:**  $^1\text{H}$ - $^1\text{H}$  Cosy Spectrum of compound **1** in  $\text{CDCl}_3$ .



**Figure S4:** HSQC Spectrum of compound **1** in CDCl<sub>3</sub>.



**Figure S5:** Enlarged HSQC Spectrum of compound **1** in  $\text{CDCl}_3$  (From  $\delta_{\text{H}}$  6.5 ppm to  $\delta_{\text{H}}$  8.4 ppm).



**Figure S6:** HMBC Spectrum of compound **1** in  $\text{CDCl}_3$ .

Data File: E:\DATA\2019\0327\wzl-38.lcd

Elmt	Val.	Min	Max	Elmt	Val.	Min	Max	Elmt	Val.	Min	Max	Elmt	Val.	Min	Max	Use Adduct
H	1	5	100	F	1	0	0	S	2	0	0	Br	1	0	0	H
C	4	5	50	Na	1	0	0	Cl	1	0	0	Pd	2	0	0	Na
N	3	0	10	Mg	2	0	0	Cu	2	0	0	Ag	1	0	0	
O	2	0	30	Si	4	0	0	Se	2	0	0	I	3	0	0	

Error Margin (ppm): 5  
 HC Ratio: unlimited  
 Max Isotopes: all  
 MSn Iso RI (%): 75.00

DBE Range: -2.0 - 100.0  
 Apply N Rule: yes  
 Isotope RI (%): 1.00  
 MSn Logic Mode: OR

Electron Ions: both  
 Use MSn Info: yes  
 Isotope Res: 10000  
 Max Results: 10

Event#: 1 MS(E+) Ret. Time : 0.387 -&gt; 0.400 Scan#: 59 -&gt; 61



Measured region for 267.0990 m/z



C15 H16 O3 [M+Na]+ : Predicted region for 267.0992 m/z



Formula (M)	Ion	Meas. m/z	Pred. m/z	Df. (mDa)	Df. (ppm)	DBE
C15 H16 O3	[M+Na]+	267.0990	267.0992	-0.2	-0.75	8.0

Figure S7: HRESIMS of compound 1 in MeOH.