

Supporting Information

Rec. Nat. Prod. 14:4 (2020) 276-285

Chemical Composition and Anticholinesterase Activity of the Essential Oil from the Ecuadorian Plant *Salvia pichinchensis* Benth.

Melissa Salinas¹, Nicole Bec², James Calva¹, Jorge Ramírez¹, José Miguel Andrade¹, Christian Larroque³, Giovanni Vidari⁴ and Chabaco Armijos¹

¹ *Departamento de Química y Ciencias Exactas, Universidad Técnica Particular de Loja, San Cayetano Alto s/n, 1101608 Loja, Ecuador*

² *IRMB, Univ Montpellier, INSERM, Montpellier, France*

³ *Supportive Care Unit, Montpellier regional Cancer Institute, ICM, 34298 Montpellier, France*

⁴ *TIU Research Center, Tishk International University, Erbil, Iraq*

Table of Contents	Page
Figure 1: Chemical structures of major compounds present in the EO of <i>S. pichinchensis</i> .	2
Figure 2: Typical chromatogram of essential oil of <i>S. pichinchensis</i> on DB-5MS column.	3
Figure 3: Typical chromatogram of essential oil of <i>S. pichinchensis</i> on HP-INNOWax column.	4

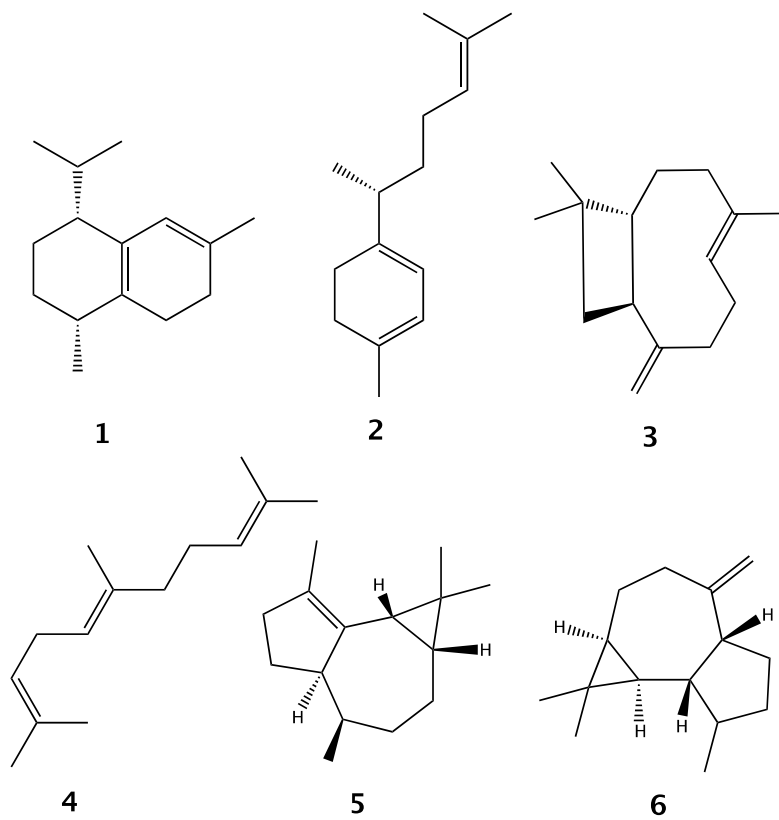


Figure 1: Chemical structures of major compounds present in the EO of *S. pichinchensis*.

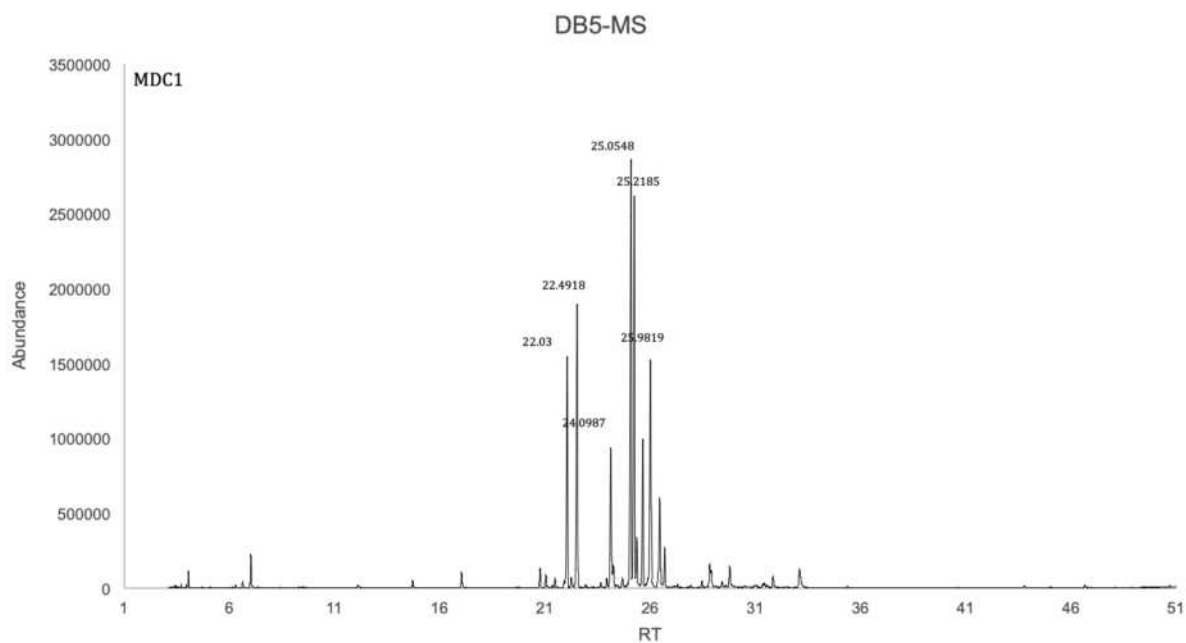


Figure 2: Typical chromatogram of essential oil of *Salvia pichinchensis* on DB-5MS column. Peak assignments and identification are reported in Table 1.

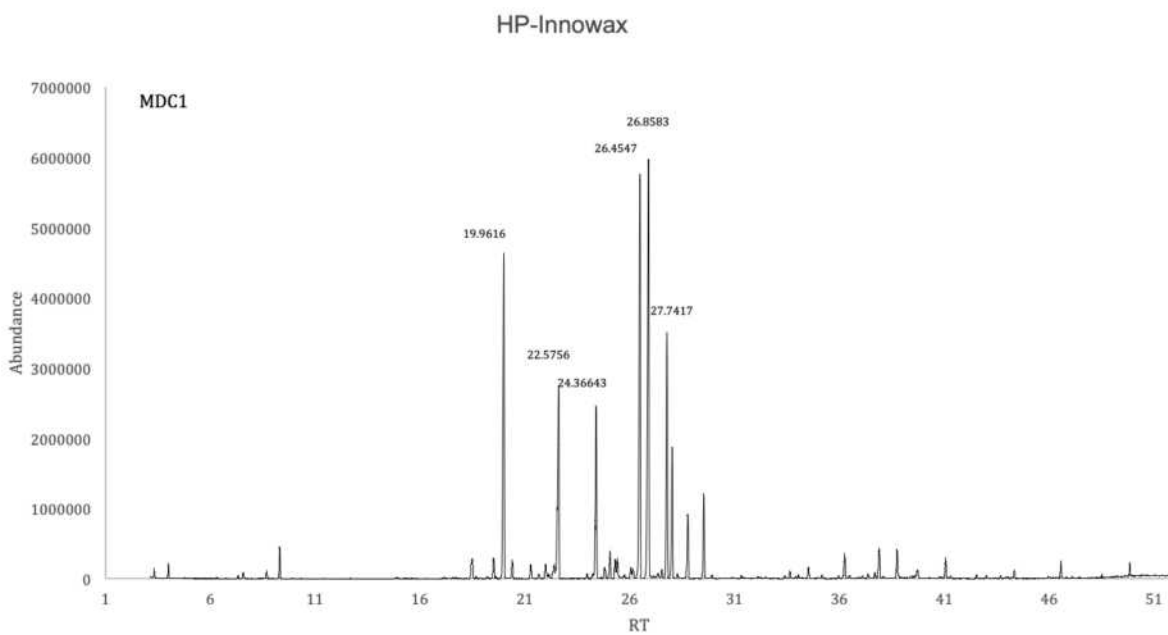


Figure 3: Typical chromatogram of essential oil of *S. pichinchensis* on HP-INNOWax column. Peak assignments and identification are reported in Table 1.