

Supporting Information

Rec. Nat. Prod. 14:5 (2020) 366-371

Essential Oil Composition of *Tilia platyphyllos* Scop. Collected from Different Regions of Kosovo

Nita Kelmendi¹, Behxhet Mustafa², Fitore Zahiri², Dashnor Nebija^{3*} and Avni Hajdari²

¹*Department of Pharmacy, College of Medical Sciences “Rezonanca” Glloku te Shelgjet 10000-Prishtina, Kosovo*

²*Department of Biology, Faculty of Mathematical and Natural Science, University of Prishtina “Hasan Prishtina”. Mother Theresa St. 10000 Prishtina, Kosovo*

³*Department of Pharmacy, Faculty of Medicine, University of Prishtina. “Hasan Prishtina” Mother Theresa St. 10000 Prishtina, Kosovo*

Table of Contents	Page
Figure S1: MS spectrum of unknown compound 1	2
Figure S2: MS spectrum of unknown compound 2	2
Table S1: Total phenolic and flavonoid contents and antioxidant activity of methanol extract of <i>Tilia platyphyllos</i> .	3
Table S2: Pearson correlations between total phenolics, total flavonoids and antioxidant test systems (DPPH and FRAP) for leaves and inflorescences of <i>Tilia platyphyllos</i> .	3
Table S3 : Compound class of identified components from <i>Tilia platyphyllos</i>	3

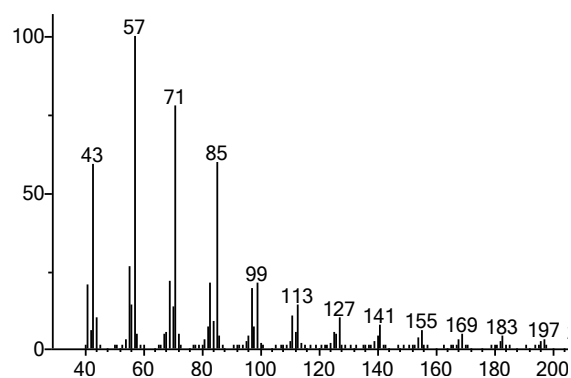


Figure S1: MS spectrum of unidentified compound 1

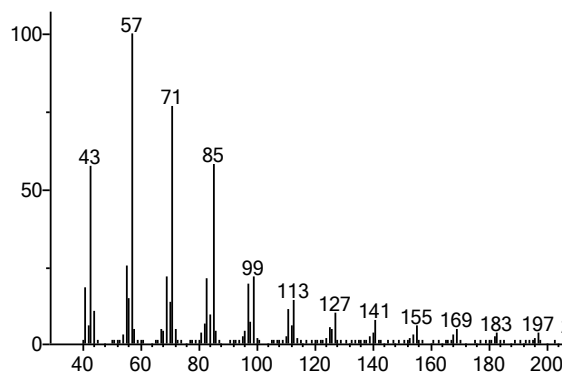


Figure S2: MS spectrum of unidentifie compound 2

Table S1: Total phenolic and flavonoid contents and antioxidant activity of methanol extract of *Tilia*

Location	Phenols, mg CAE /g dm		Flavonoids mg CE/g dm		DPPH mg TE/g dm		DPPH % inhibition		FRAP mg TE/g dm	
	Leaves	Inflorescences	Leaves	Inflorescences	Leaves	Inflorescences	Leaves	Inflorescences	Leaves	Inflorescences
Pejë	66.9±15.9 ^a _b	163.1±28.8 ^a _a	29.1±6.3 ^a _b	80.6±18.2 ^a _a	37.9±5.3 ^a _a	33.8±3.7 ^a _a	46.7±6.9 ^a _a	41.4±5.5 ^a _a	51.7±12.4 ^a _b	129.6±25.4 ^a _a
Gjilan	81.3±38.2 ^a _b	150.1±24.8 ^a _a	34.7±15.4 ^a _b	80.5±18.6 ^a _a	33.0±11.1 ^a _a	37.2±9.3 ^a _a	40.3±14.3 ^a _a	42.4±12.1 ^a _a	62.1±32.5 ^a _b	115.6±24.4 ^a _a
Lipjan	65.9±7.2 ^a _b	186.1±28.5 ^a _a	26.8±6.1 ^a _b	90.9±17.2 ^a _a	28.5±9.5 ^a _b	40.1±2.5 ^a _a	34.5±12.2 ^a _b	50.3±3.2 ^a _a	53.2±12.8 ^a _b	137.7±27.6 ^a _a
Klinë	46.8±6.5 ^a _b	178.9±15.1 ^a _a	19.6±3.6 ^a _b	100.5±8.03 ^a _a	33.3±2.9 ^a _a	32.1±3.5 ^a _a	40.7±3.7 ^a _a	39.2±4.4 ^a _a	32.8±3.8 ^a _b	145.6±12.8 ^a _a
Suharekë	41.6±1.4 ^a _b	132.5±5.7 ^a _a	17.8±1.4 ^a _b	73.6±2.1 ^a _a	22.9±1.3 ^a _b	32.8±1.4 ^a _a	27.5±1.4 ^a _b	40.3±1.4 ^a _a	27.5±2.1 ^a _b	100.1±2.8 ^a _a

platyphyllos.

* Superscripts show differences between locations; subscripts show differences between organs

Table S2: Pearson correlations between total phenolics, total flavonoids and antioxidant test systems (DPPH and FRAP) for leaves and Inflorescences of *Tilia platyphyllos*.

Organs		Total Phenolics	Total Flavonoids	DPPH
Leaves	Total flavonoids	0.966**	-	-
	DPPH	-0.053	-0.026	-
	FRAP	0.974**	0.964**	-0.079
Inflorescences	Total Flavonoids	0.885**	-	-
	DPPH	0.490*	0.438*	-
	FRAP	0.926**	0.920**	0.353

**Correlation is significant at the 0.01 level (2-tailed).

*Correlation is significant at the 0.05 level (2-tailed).

Table S3 : Compound class of identified components from *Tilia platyphyllos*.

Oxygenated monoterpenes	6.18	3.92	5.62	4.36	5.46	3.88	4.23	5.69	5.22	7.22
Oxygenated sesquiterpenes	12.19	26.2	18.53	24.86	13.99	30.58	16.54	21.29	23.05	31.19
Sesquiterpenes	4.16	6.14	9.42	6.81	5.28	7.48	5.62	6.04	3.44	10.84
Fatty acids and derivatives	8.03	20.06	9.11	18.05	8.71	23.1	10.92	15.25	19.61	20.35
Hydrocarbons	44.06	36.81	41.68	36.62	43.87	27.48	45.94	34.93	46.18	29.89
Other compounds	8.32	6.27	4.88	5.13	6.01	6.04	6.04	5.63	3.47	7.32
Unidentified	6.11	7.18	5.84	6.96	6.16	3.62	3.66	3.95	1.33	5.32