

Supporting Information

A Rapid Densitometric Method for Quantification of Wedelolactone in Herbal Formulations using HPTLC

J Chem. Merol. 4:1 28-33 (2010)

Nitin S. Wani, Tushar A. Deshmukh*, Vijay R. Patil

Department of Pharmacognosy, Tapi Valley Education Society's, Hon'ble, Loksevak Madhukarrao Chaudhari College of Pharmacy, North Maharashtra University, Faizpur- 425 503, India.

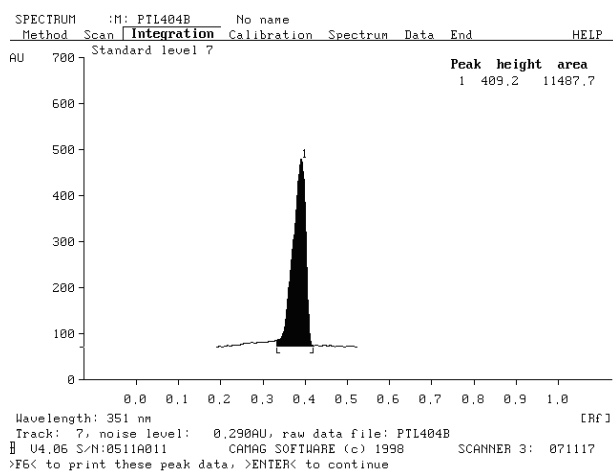


Figure 1 Chromatogram of Wedelolactone (600 ng spot-1): peak 1 (Rf = 0.39±0.03), mobile phase: toluene: ethyl acetate: acetone: formic acid (6:2:1:1, v/v/v/v).

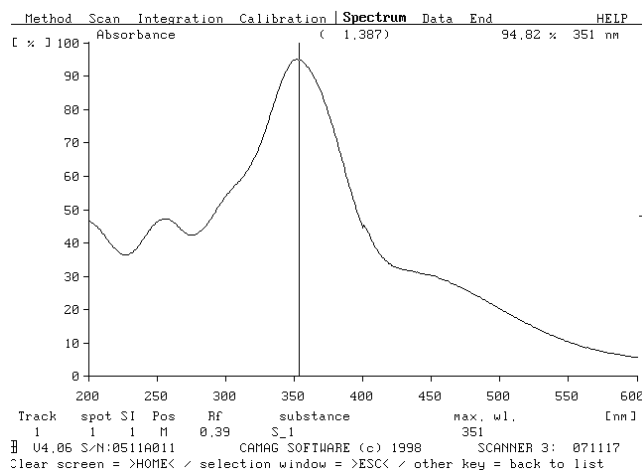


Figure 2. Absorption spectra of Wedelolactone.