

Supporting Information

Rec. Nat. Prod. 13:4 (2019) 324-332

Chemical Compositions of Essential oil of *Piper* Species from Atlantic Forest of Amazonia, Brazil

Carolina A. de Araujo¹, Claudio A.G. da Camara^{1*},
Marcilio M. de Moraes¹, Geraldo José Nascimento de Vasconcelos²,
Marta R. Pereira³ and Charles E. Zartman³

¹ Department of Chemistry, Rural Federal University of Pernambuco, Street Dom
Manoel de Medeiros s/n, 52.171-030 Recife, PE, Brazil

² Federal University of Amazonas – Campus ICET. Street Nossa Senhora do Rosário,
3863, Tiradentes - CEP: 69103-128, Itacoatiara, Amazonas, Brazil

³ National Institute for Amazonian Research, Department of Biodiversity
Av. André Araújo, 2936, Petrópolis, CEP 69060-001, Manaus, Amazonas, Brazil

Table of Contents	Page
Figure S1: GC-MS chromatogram of the essential oil from leaves of <i>Piper japurense</i>	2
Figure S2: GC-MS chromatogram of the essential oil from leaves of <i>Piper coariense</i>	2
Figure S3: GC-MS chromatogram of the essential oil from leaves of <i>Piper ariculifolium</i>	3
Figure S4: GC-MS chromatogram of the essential oil from leaves of <i>Piper curtistilum</i>	3
Figure S5: GC-MS chromatogram of the essential oil from leaves of <i>Piper alatipetiolatum</i>	4
Figure S6: GC-MS chromatogram of the essential oil from leaves of <i>Piper brevesanum</i>	4

* Corresponding author: E-Mail: claudio_agc@hotmail.com ; Phone:086-592-2184180 Fax:086-592-2181722

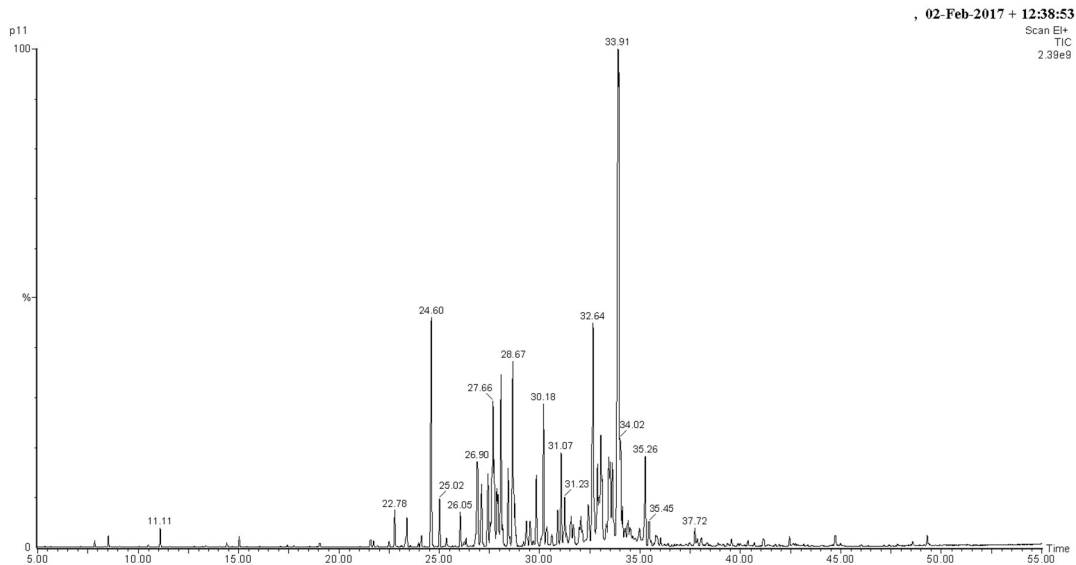


Figure S1: GC-MS chromatogram of the essential oil from leaves of *Piper japurense*.

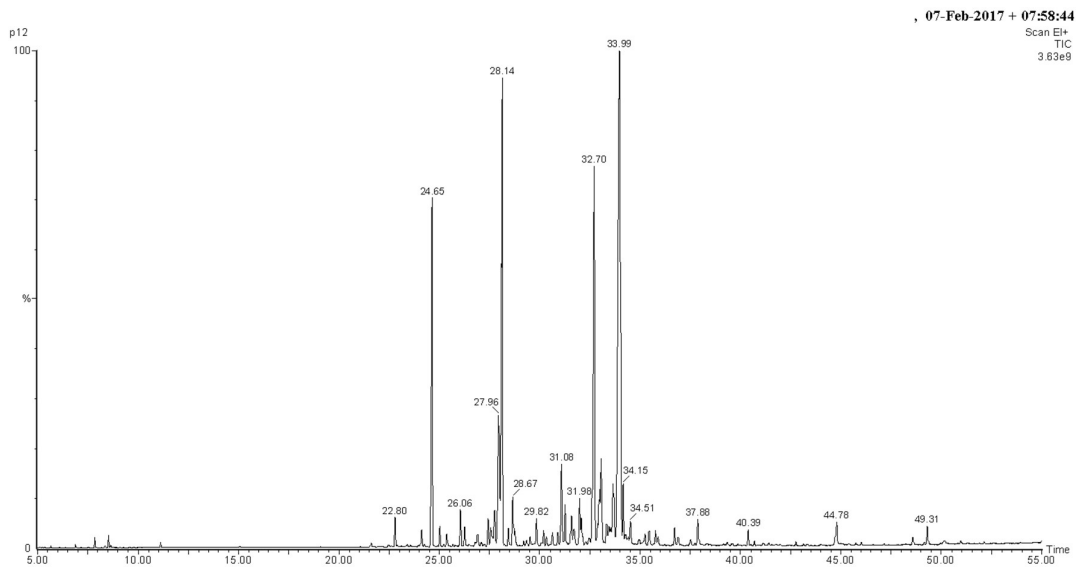


Figure S2: GC-MS chromatogram of the essential oil from leaves of *Piper coariense*.

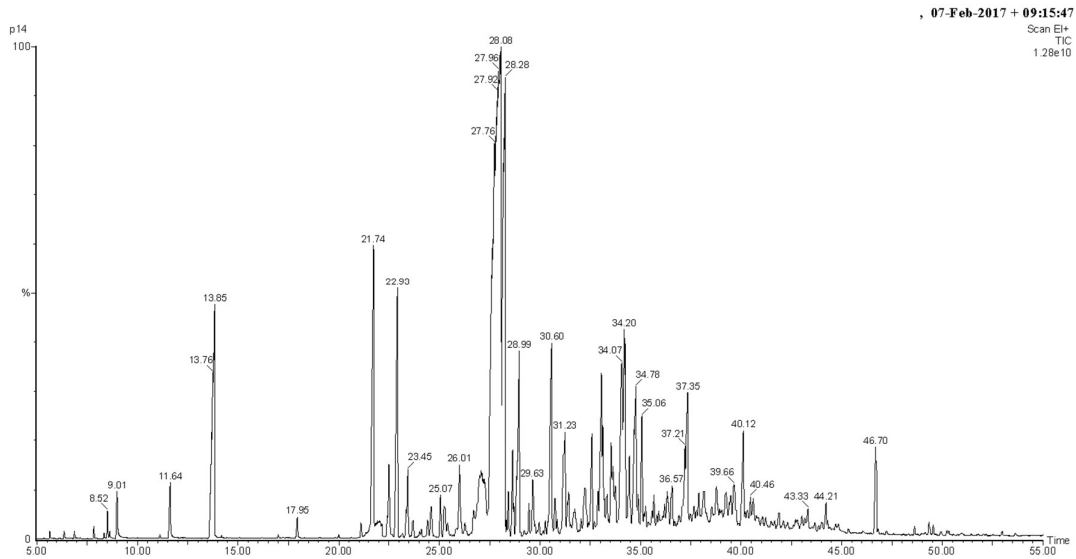


Figure S3: GC-MS chromatogram of the essential oil from leaves of *Piper ariculifolium*.

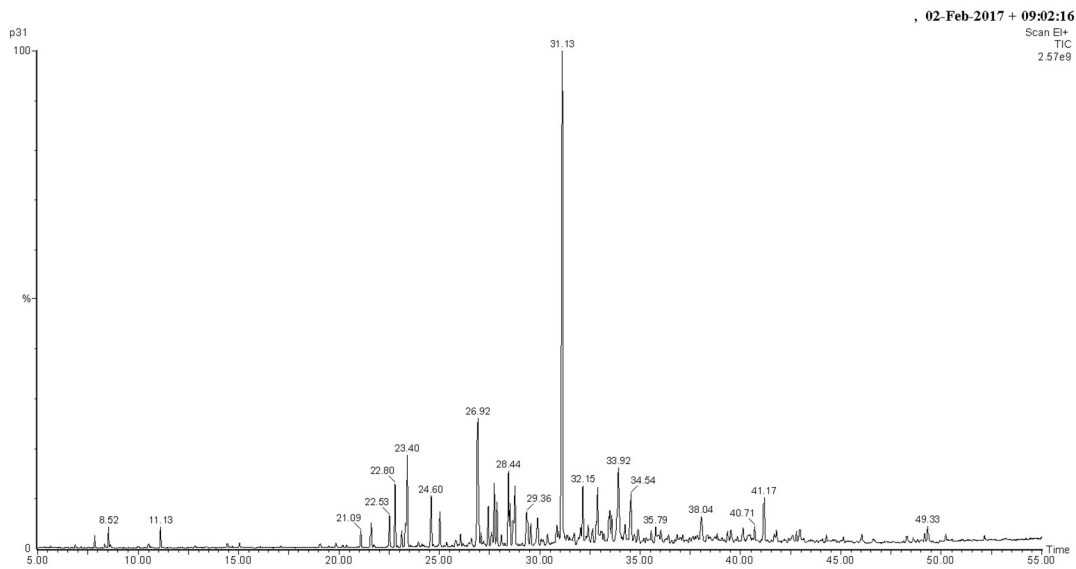


Figure S4: GC-MS chromatogram of the essential oil from leaves of *Piper curtistilum*.

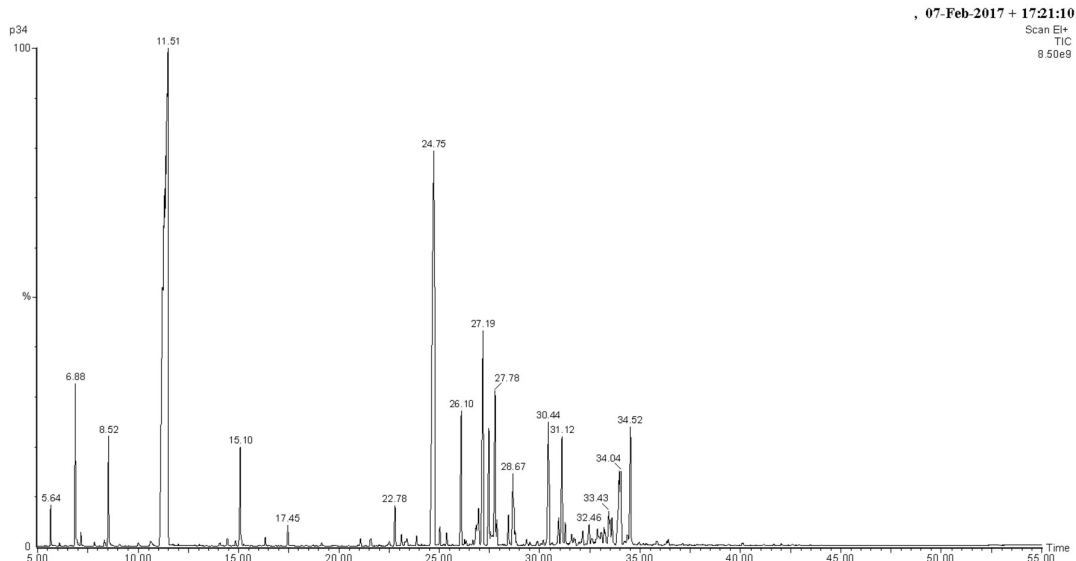


Figure S5: GC-MS chromatogram of the essential oil from leaves of *Piper alatipetiolatum*.

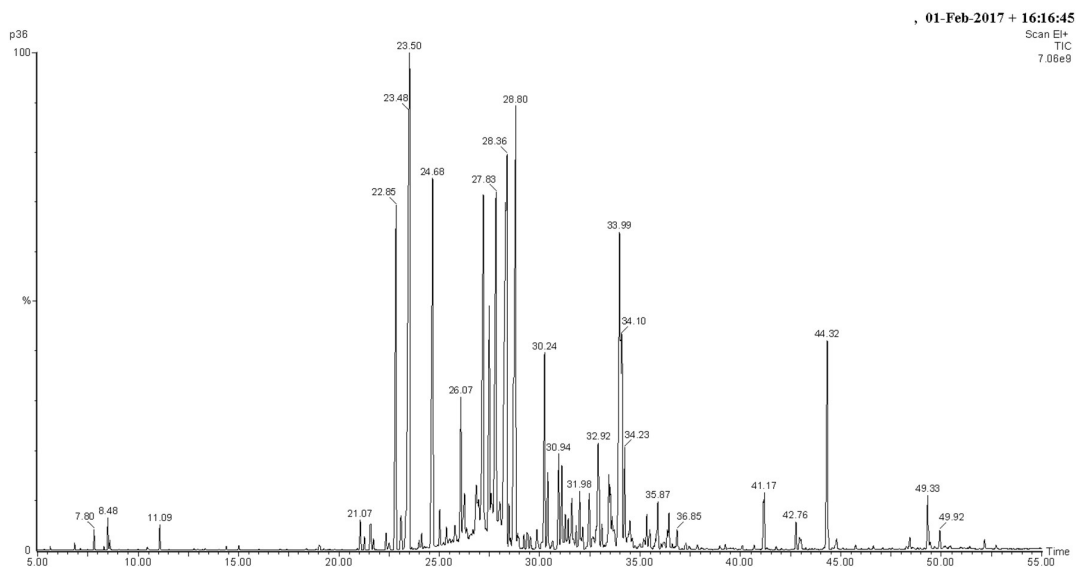


Figure S6: GC-MS chromatogram of the essential oil from leaves of *Piper brevesanum*.