

Supporting Information

Rec. Nat. Prod. X:X (2021) XX-XX

Isolation and Characterization of Glycosidic Tyrosinase

Inhibitors from *Typhonium giganteum* Rhizomes

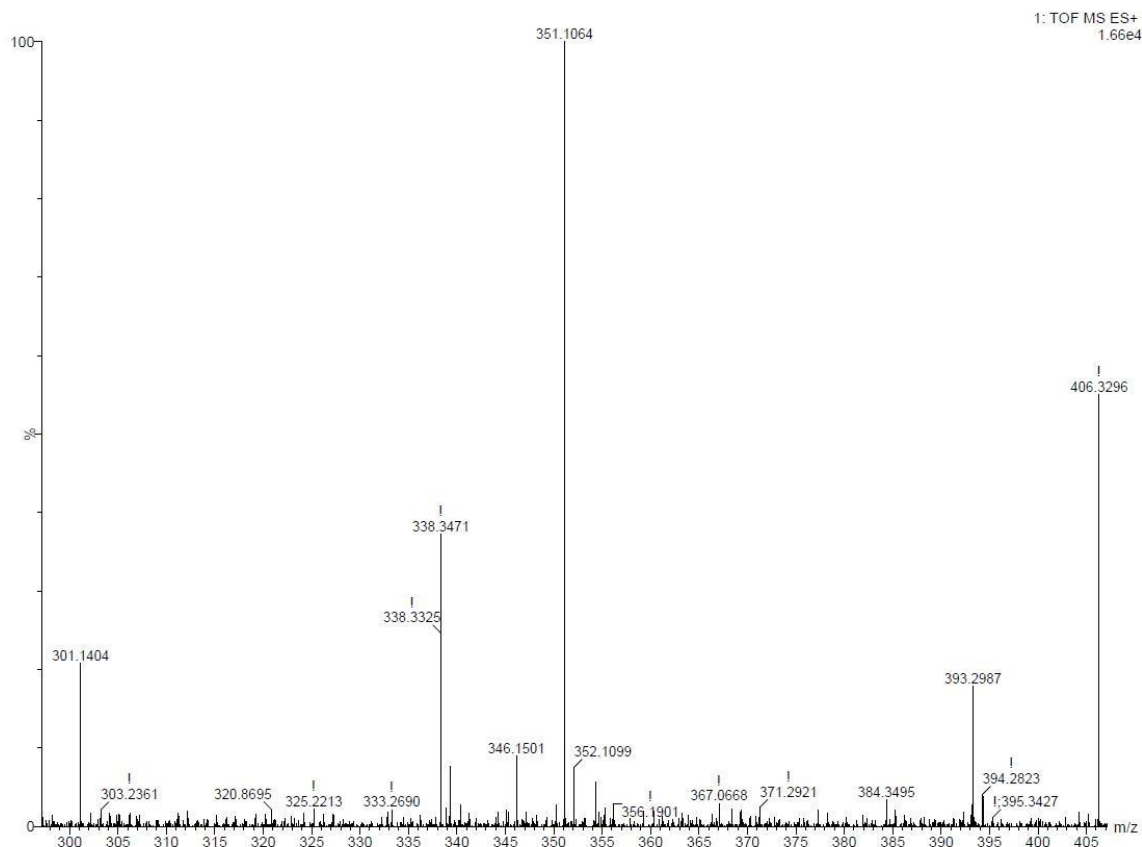
Penghua Shu^{1*}, Huiqing Zhu¹, Wanrong Liu¹, Lingxiang Zhang¹, Junping Li¹, Mengzhu Yu¹, Yingying Fei¹, Shujing Cai¹, Ruihua Li¹, Xialan Wei², Wenhan Yi³ and Fugang Xiao^{1*}

¹ Food and Pharmacy College, Xuchang University, Xuchang, Henan 461000, P. R. China

² School of Information Engineering, Xuchang University, Xuchang, Henan 461000, P. R. China

³ Communist Youth League Committee, Xuchang University, Xuchang, Henan 461000, P. R. China

Table of Contents	Page
Figure S1: HR-ESI-MS spectrum of 1	2
Figure S2: IR spectrum of 1	3
Figure S3: UV spectrum of 1 in MeOH	4
Figure S4: ¹ H NMR spectrum (400 MHz) of 1 in CD ₃ OD	5
Figure S5: ¹³ C NMR spectrum (100 MHz) of 1 in CD ₃ OD	6
Figure S6: DEPT 135 spectrum of 1 in CD ₃ OD	7
Figure S7: HSQC spectrum of 1 in CD ₃ OD	8
Figure S8: ¹ H- ¹ H COSY spectrum of 1 in CD ₃ OD	9
Figure S9: HMBC spectrum of 1 in CD ₃ OD	10
Figure S10: NOESY spectrum of 1 in CD ₃ OD	11
Figure S11: ¹ H NMR spectrum (400 MHz) of 1a in CD ₃ OD	12
Figure S12: ¹³ C NMR spectrum (100 MHz) of 1a in CD ₃ OD	13



Elemental Composition Report

Page 1

Single Mass Analysis

Tolerance = 5.0 PPM / DBE: min = -1.5, max = 50.0

Element prediction: Off

Number of isotope peaks used for i-FIT = 3

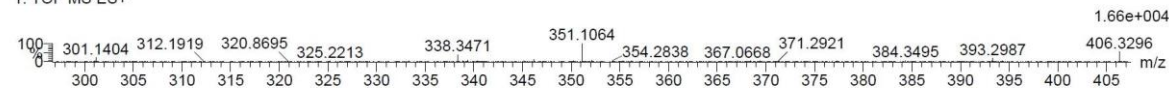
Monoisotopic Mass, Even Electron Ions

236 formula(e) evaluated with 1 results within limits (up to 50 closest results for each mass)

Elements Used:

C: 15-15 H: 0-100 N: 0-10 O: 0-10 Na: 0-1

1: TOF MS ES+



Minimum: -1.5
Maximum: 50.0

Mass	Calc. Mass	mDa	PPM	DBE	i-FIT	Norm	Conf(%)	Formula
351.1064	351.1056	0.8	2.3	5.5	403.9	n/a	n/a	C15 H20 O8 Na

Figure S1: HR-ESI-MS spectrum of **1**

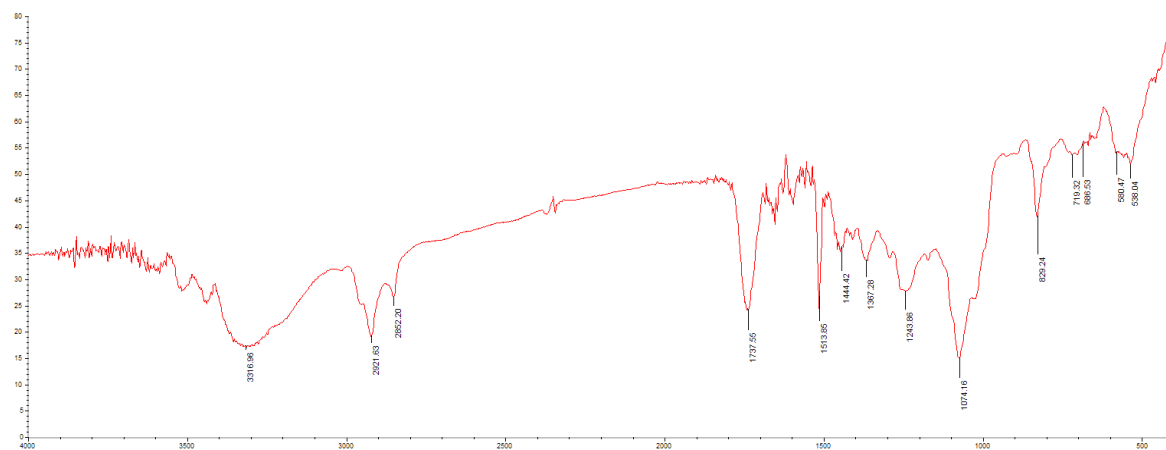


Figure S2: IR spectrum of 1

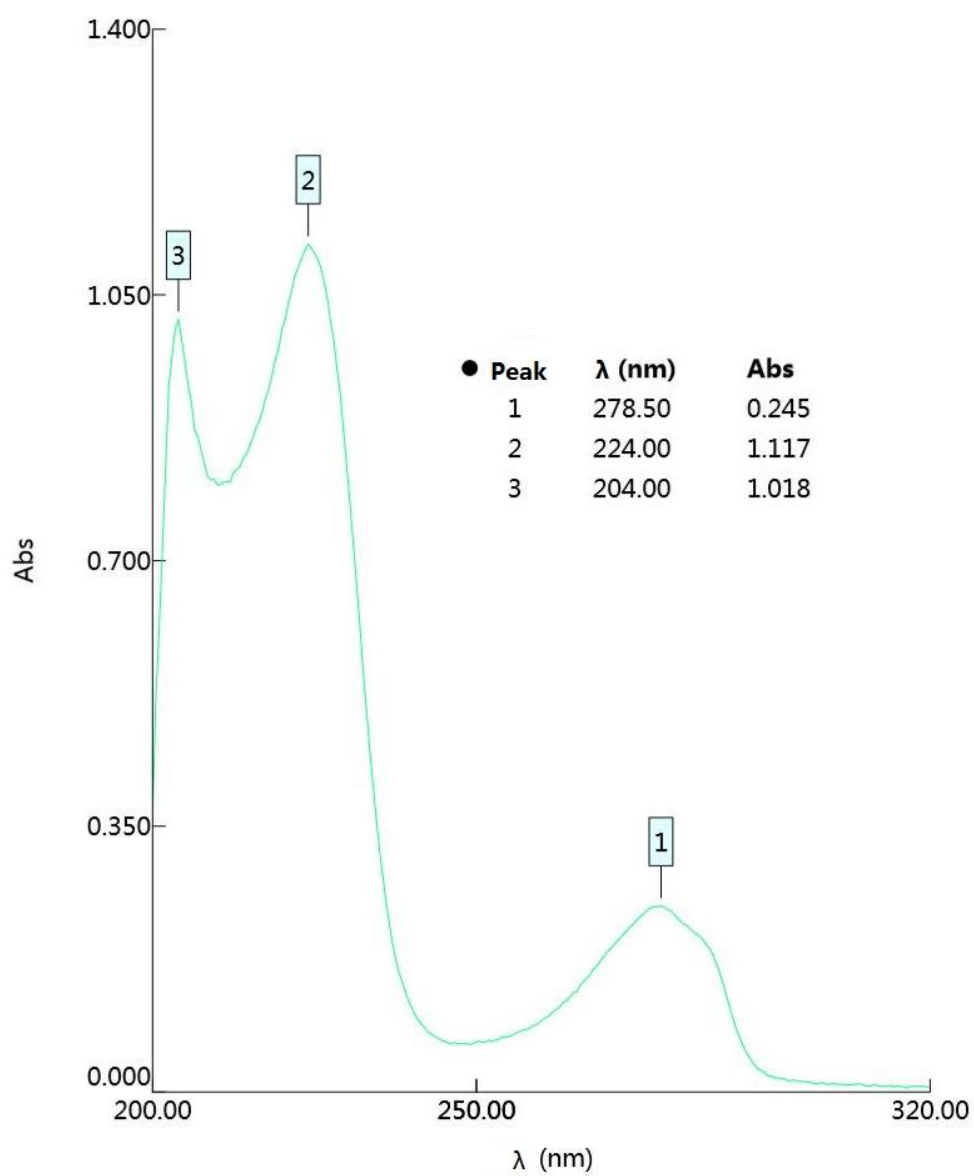


Figure S3: UV spectrum of **1** in MeOH

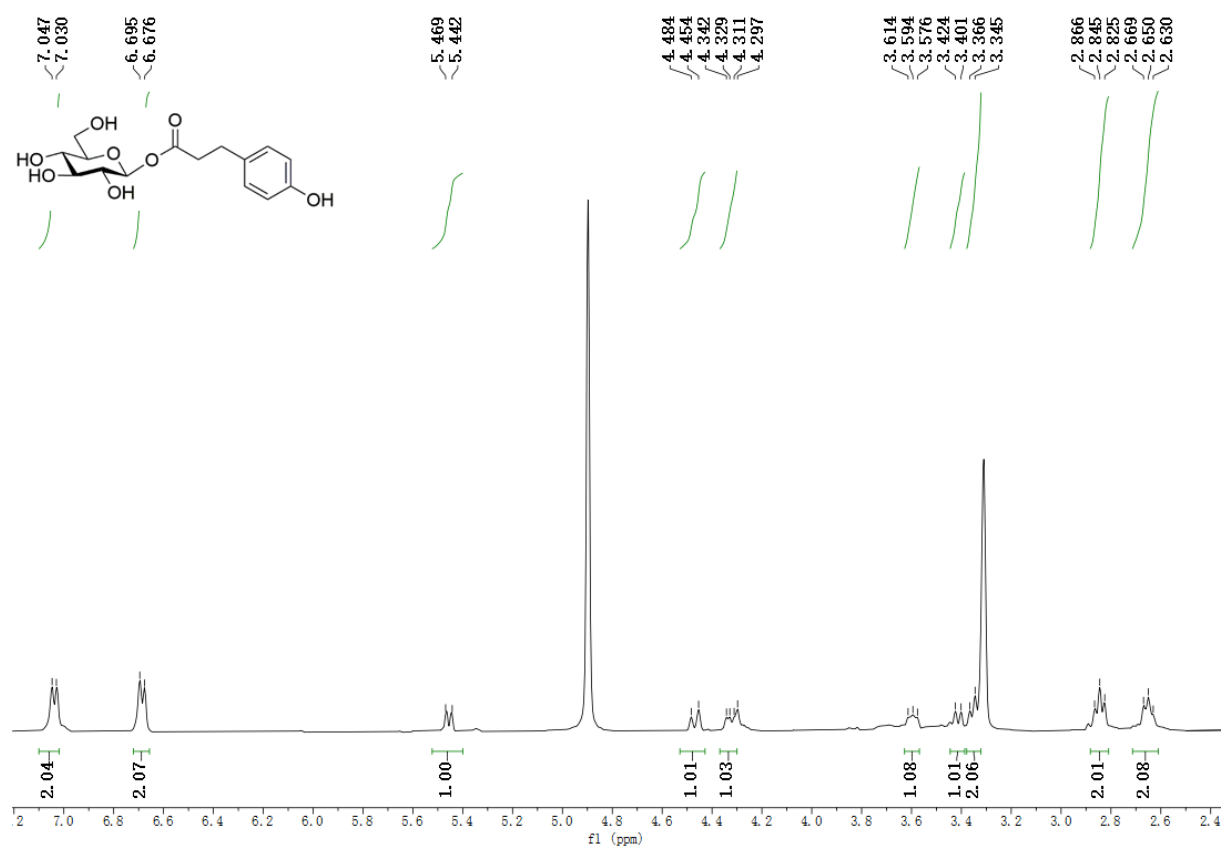


Figure S4: ^1H NMR spectrum (400 MHz) of **1** in CD_3OD

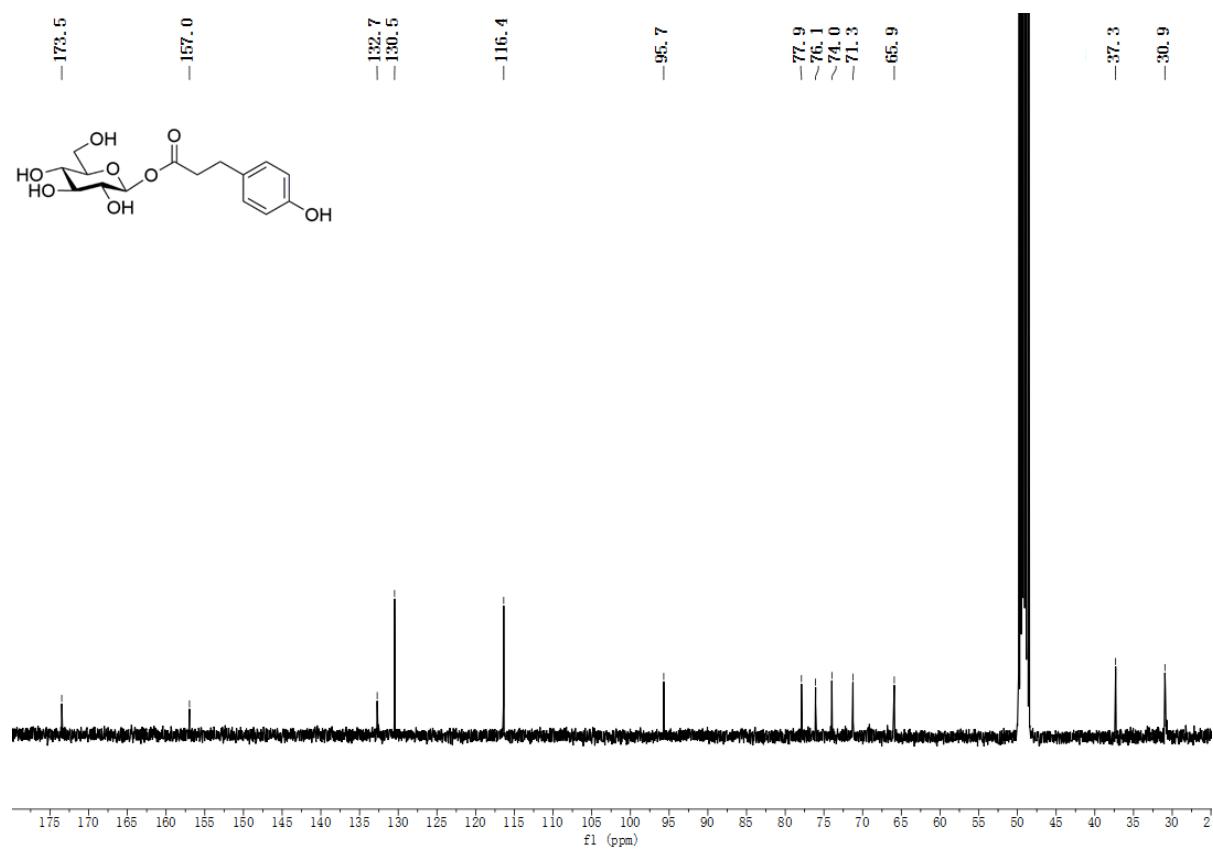


Figure S5: ¹³C NMR spectrum (100 MHz) of **1** in CD₃OD

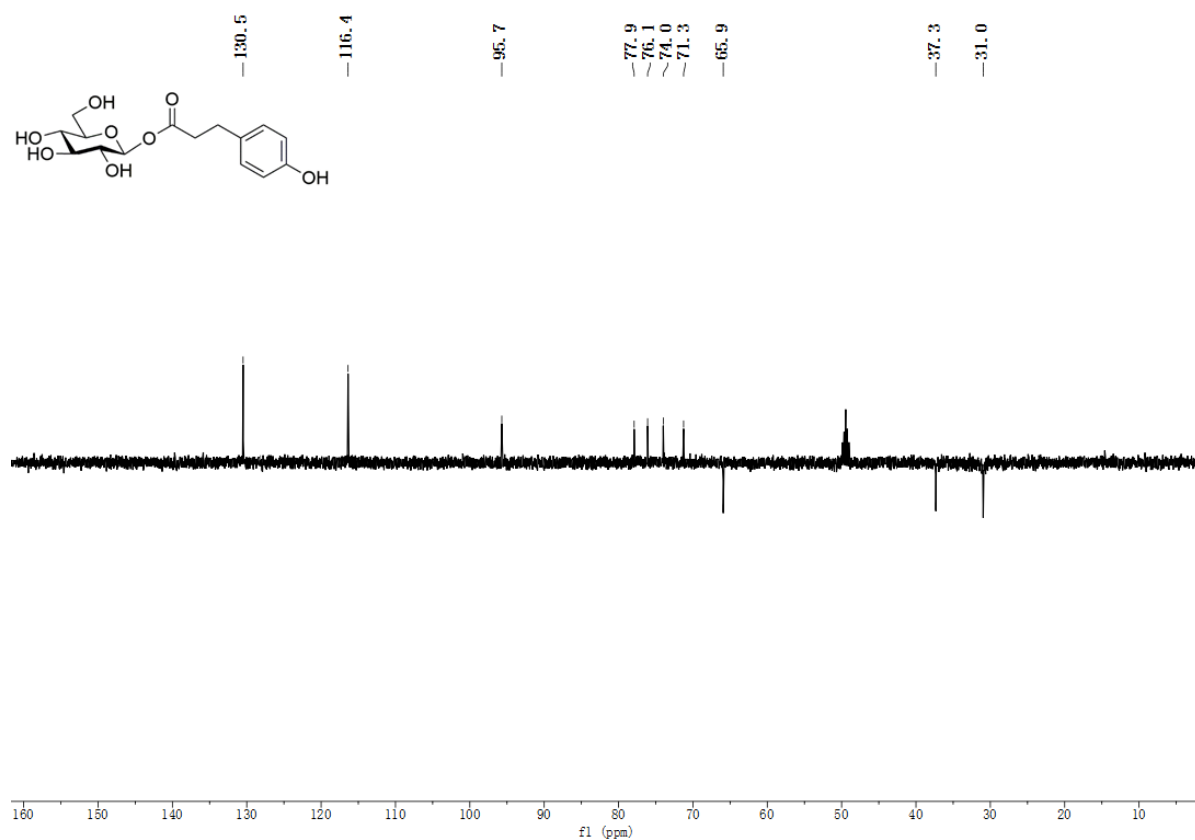


Figure S6: DEPT 135 spectrum of **1** in CD₃OD

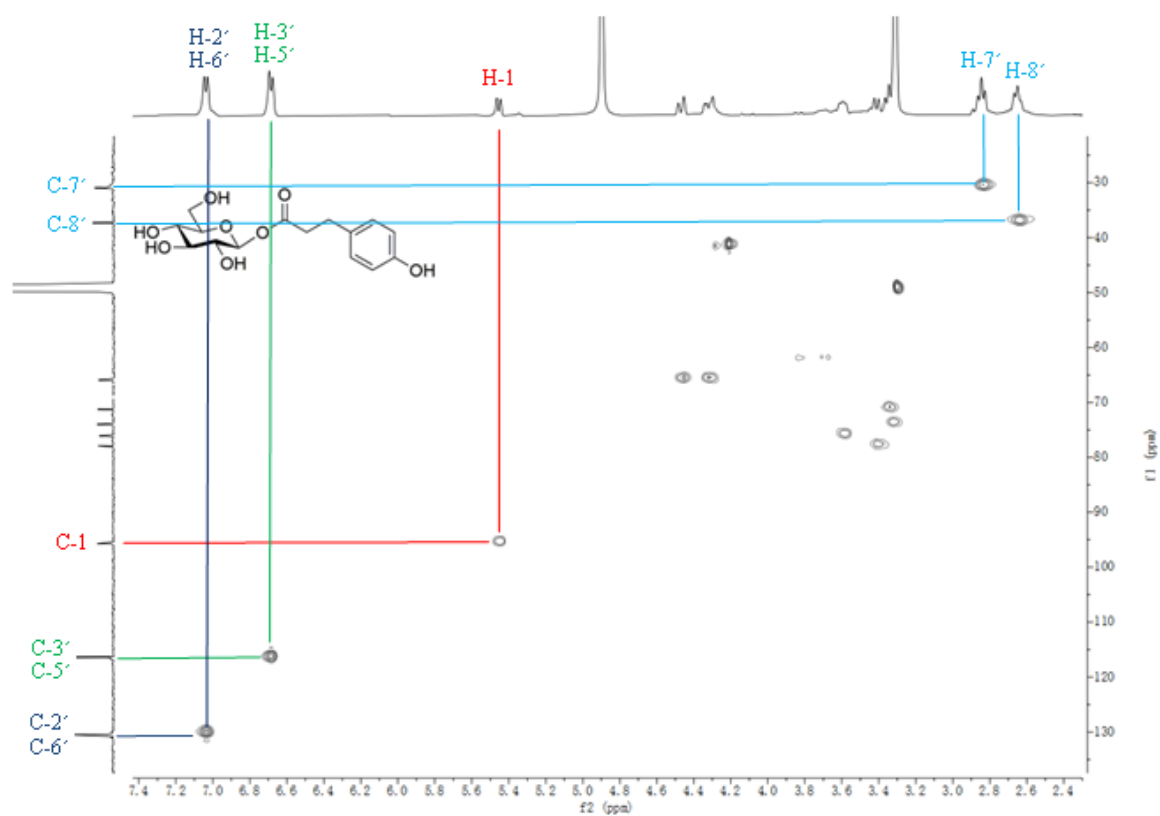


Figure S7: HSQC spectrum of **1** in CD₃OD

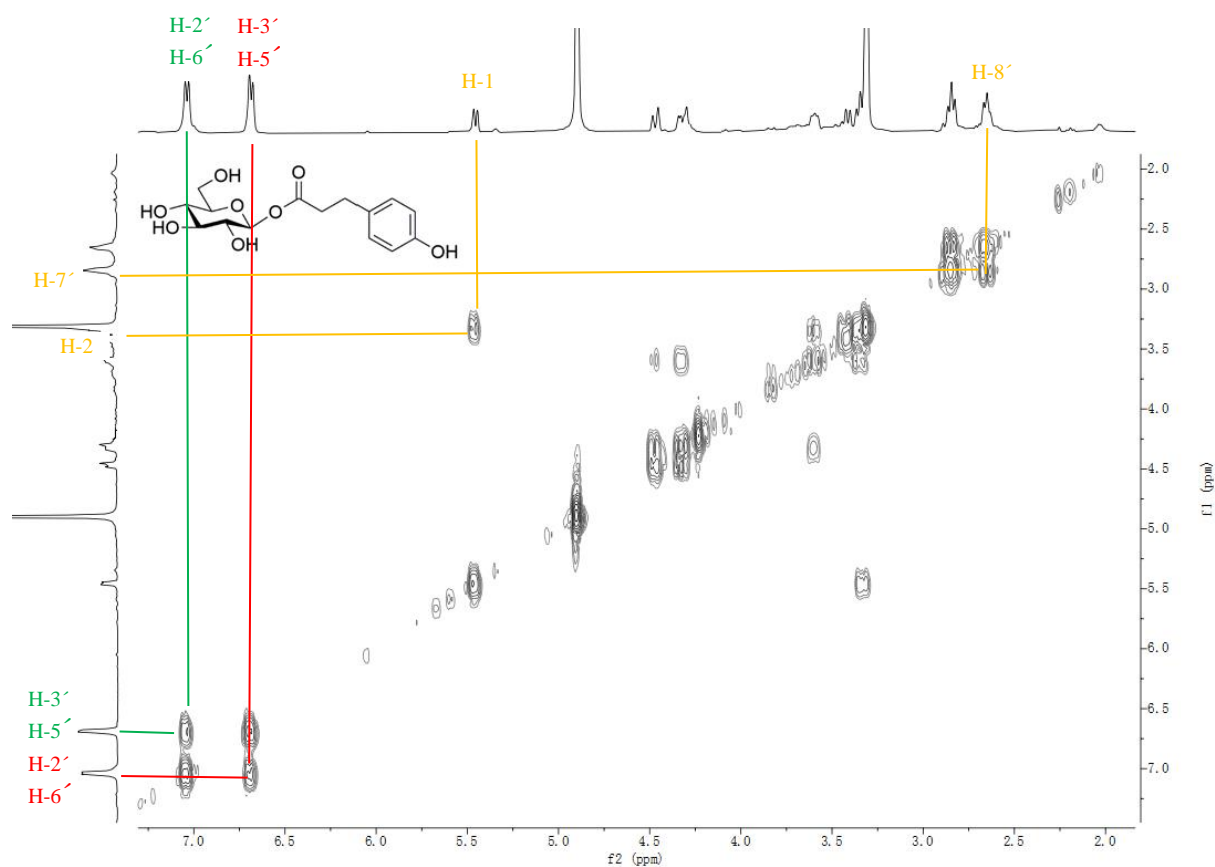


Figure S8: ^1H - ^1H COSY spectrum of **1** in CD_3OD

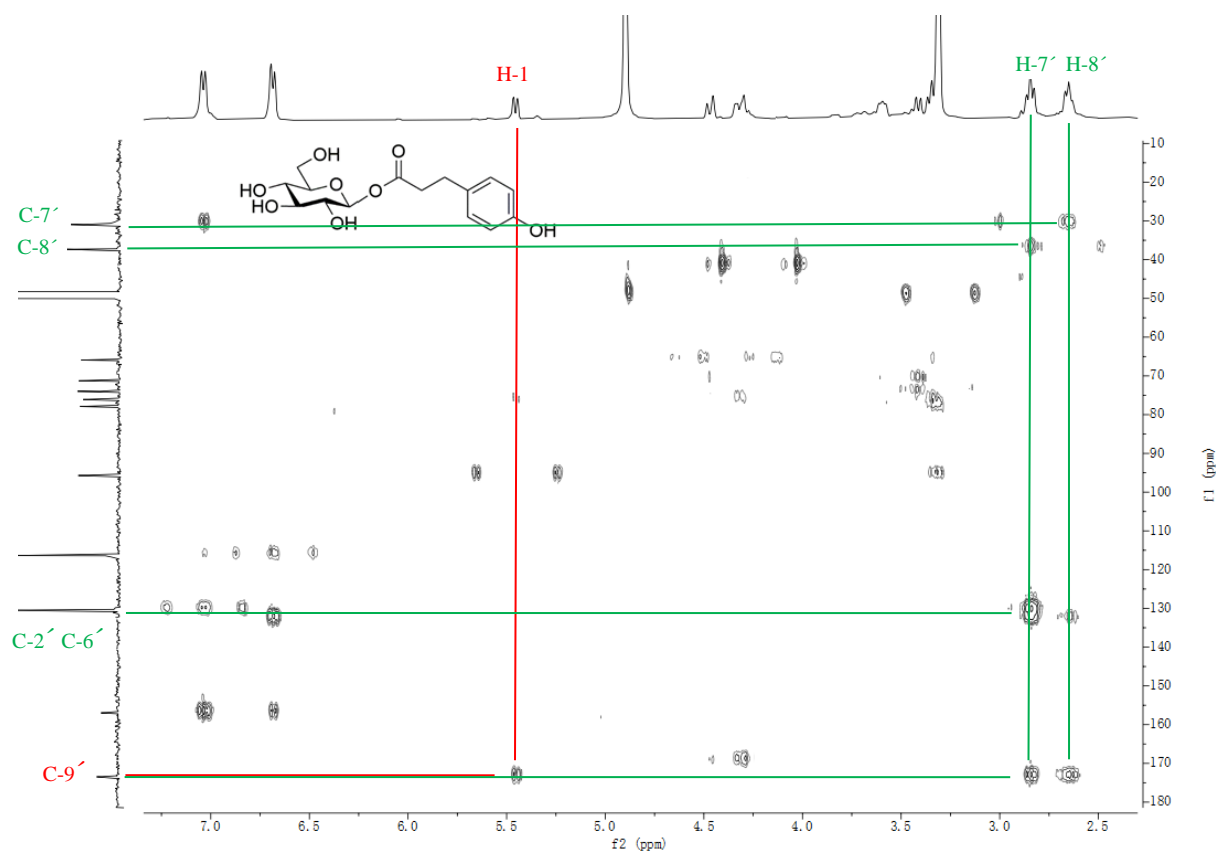


Figure S9: HMBC spectrum of **1** in CD₃OD

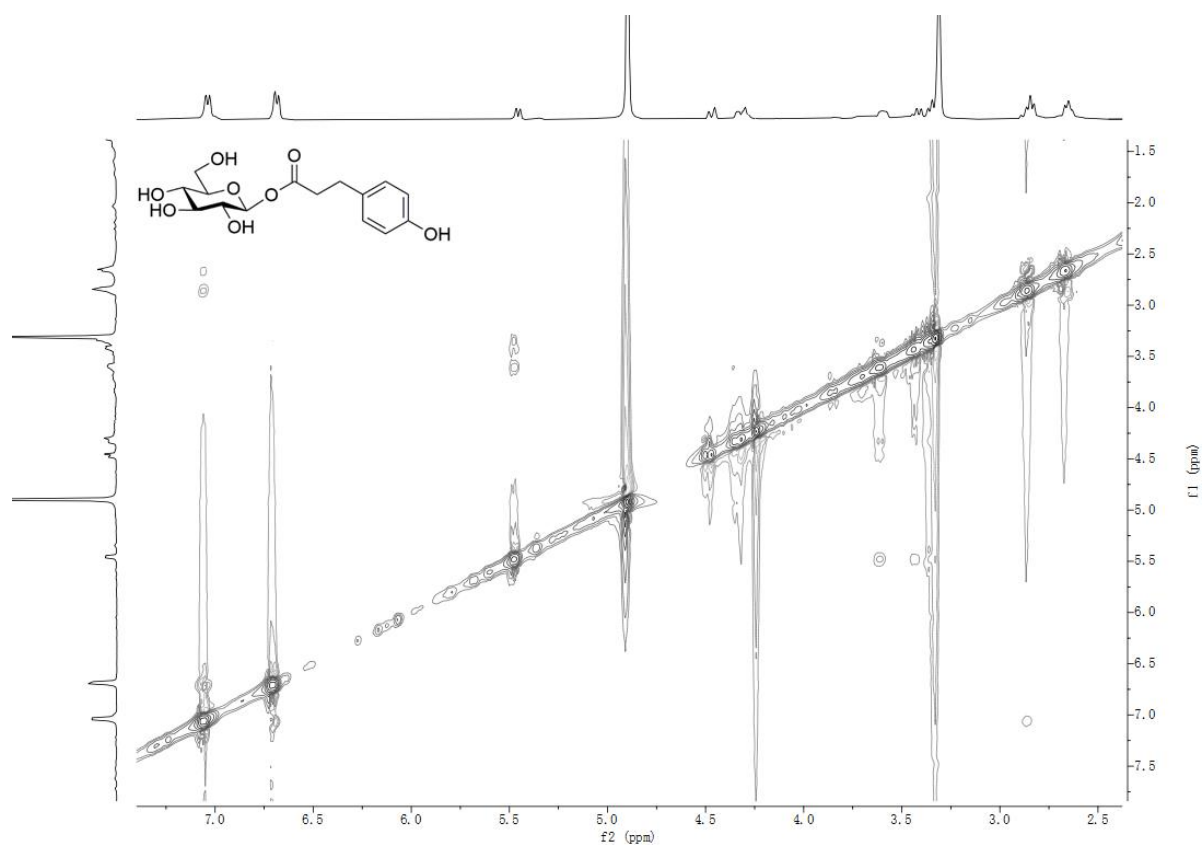


Figure S10: NOESY spectrum of **1** in CD₃OD

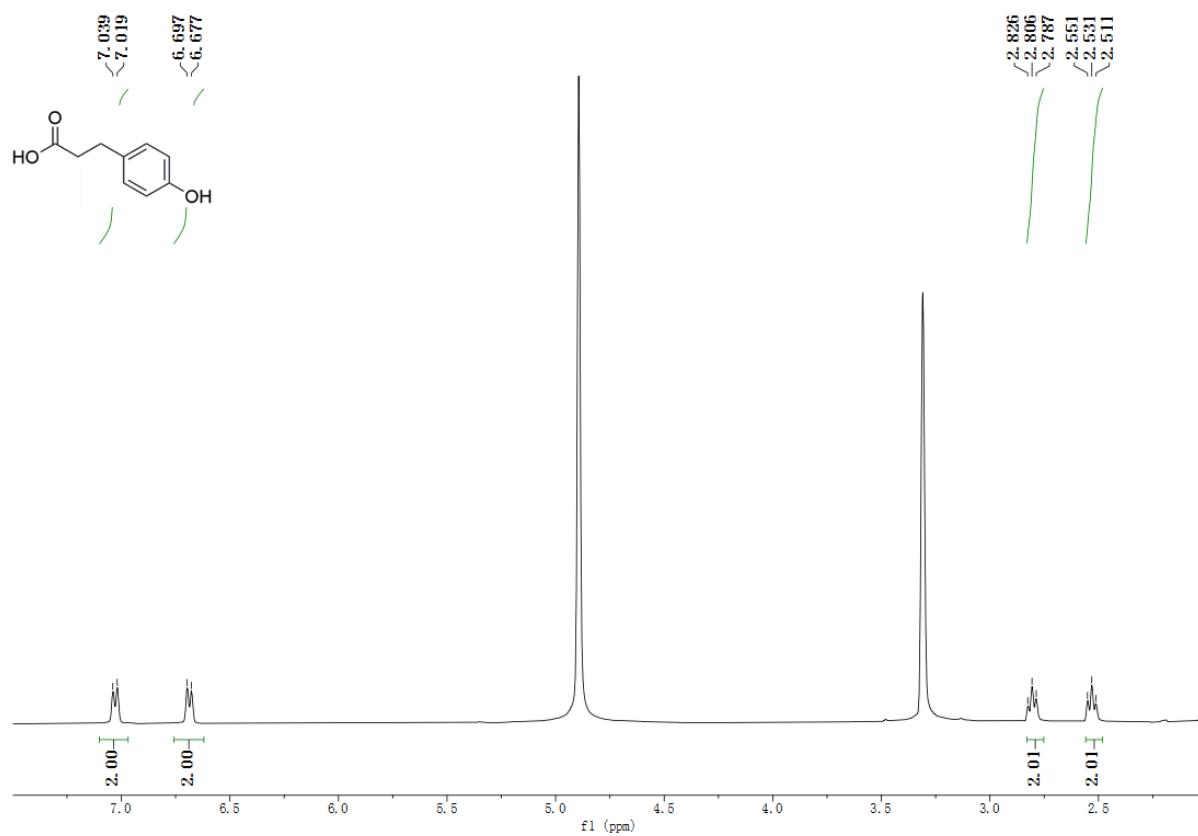


Figure S11: ^1H NMR spectrum (400 MHz) of **1a** in CD_3OD

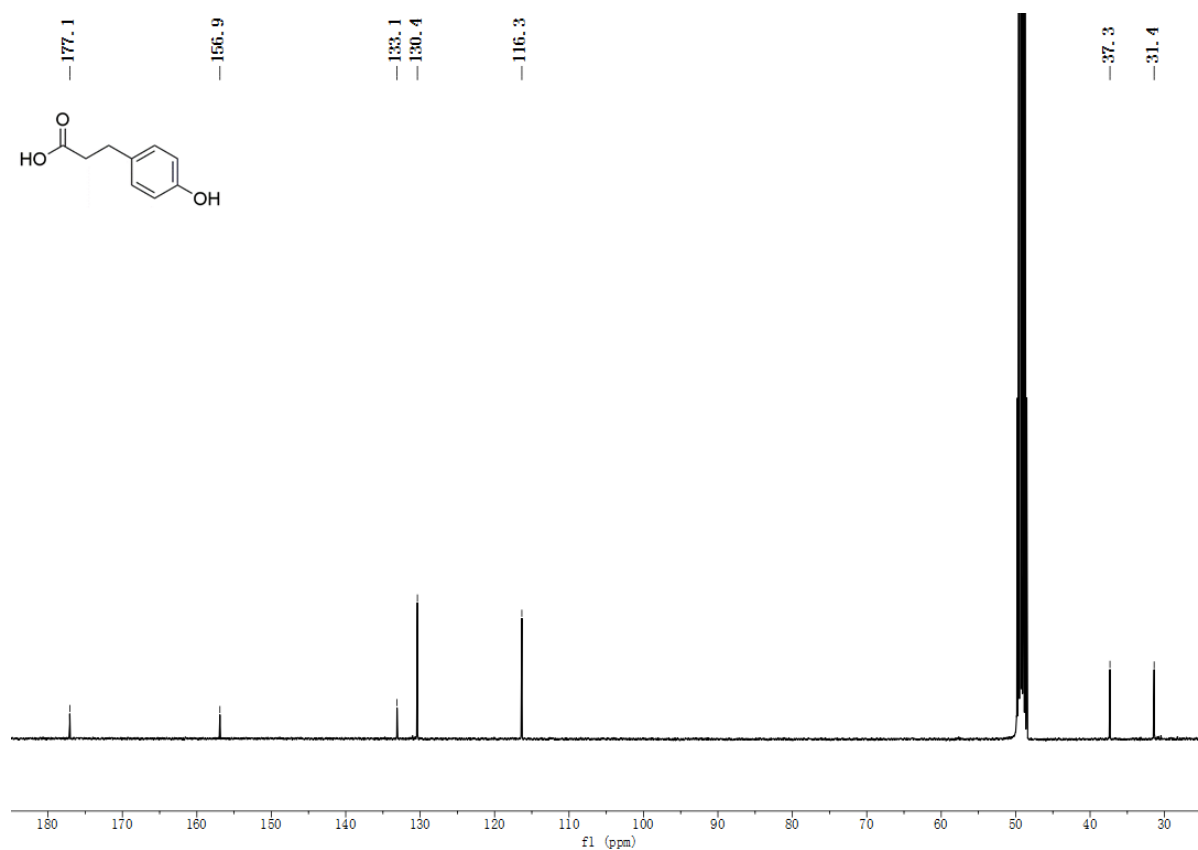


Figure S12: ¹³C NMR spectrum (100 MHz) of **1a** in CD₃OD