

## Supporting Information

*Rec. Nat. Prod.* 15:6 (2021) 513-528

### Anticholinergic, Antidiabetic and Antioxidant Activities of *Ferula orientalis* L.-Analysis of Its Polyphenol Contents by LC-HRMS

Hatice Kızıldaş <sup>1</sup>, Ahmet C. Gören<sup>2,3</sup>, Zeynebe Bingöl <sup>4,5</sup>,

Saleh H. Alwasel <sup>6</sup> and İlhami Gülçin <sup>5</sup>,

<sup>1</sup>Vocational School of Health Services, Van Yüzüncü Yıl University, 65080-Van, Türkiye

<sup>2</sup>Department of Analytical Chemistry, Faculty of Pharmacy, Bezmialem Vakıf University, 34093-Istanbul, Türkiye

<sup>3</sup>Drug Application and Research Center (İLMER), Bezmialem Vakıf University, 34093-Istanbul, Türkiye

<sup>4</sup>Vocational School of Health Services, Tokat Gaziosmanpaşa University, 65080-Van, Türkiye

<sup>5</sup>Department of Chemistry, Faculty of Sciences, Atatürk University, 25240-Erzurum, Türkiye

<sup>6</sup>Department of Zoology, College of Science, King Saud University, Riyadh, Saudi Arabia

Table of Contents	Page
<b>Figure S1</b> : LC-HRMS chromatogram of standard compounds-1	2
<b>Figure S2</b> : LC-HRMS chromatogram of standard compounds-1	3
<b>Figure S3</b> : LC-HRMS chromatogram of standard compounds-1	4
<b>Figure S4</b> : A representative LC-HRMS chromatogram of lyophilized water extract of <i>Ferula orientalis</i> L. -1	5
<b>Figure S5</b> : A representative LC-HRMS chromatogram of lyophilized water extract of <i>Ferula orientalis</i> L.-2	6
<b>Figure S6</b> : A representative LC-HRMS chromatogram of lyophilized water extract of <i>Ferula orientalis</i> L. -3	7

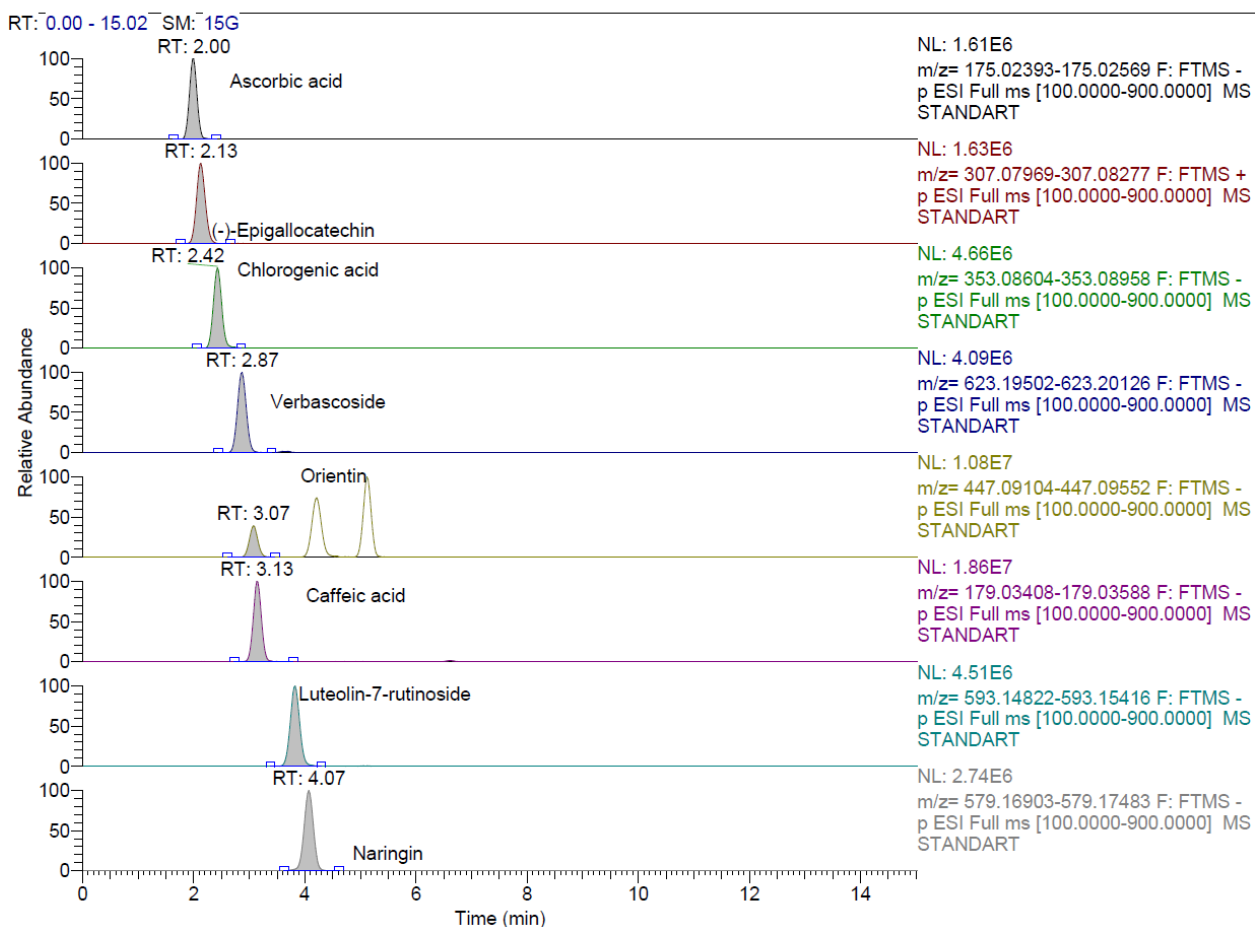
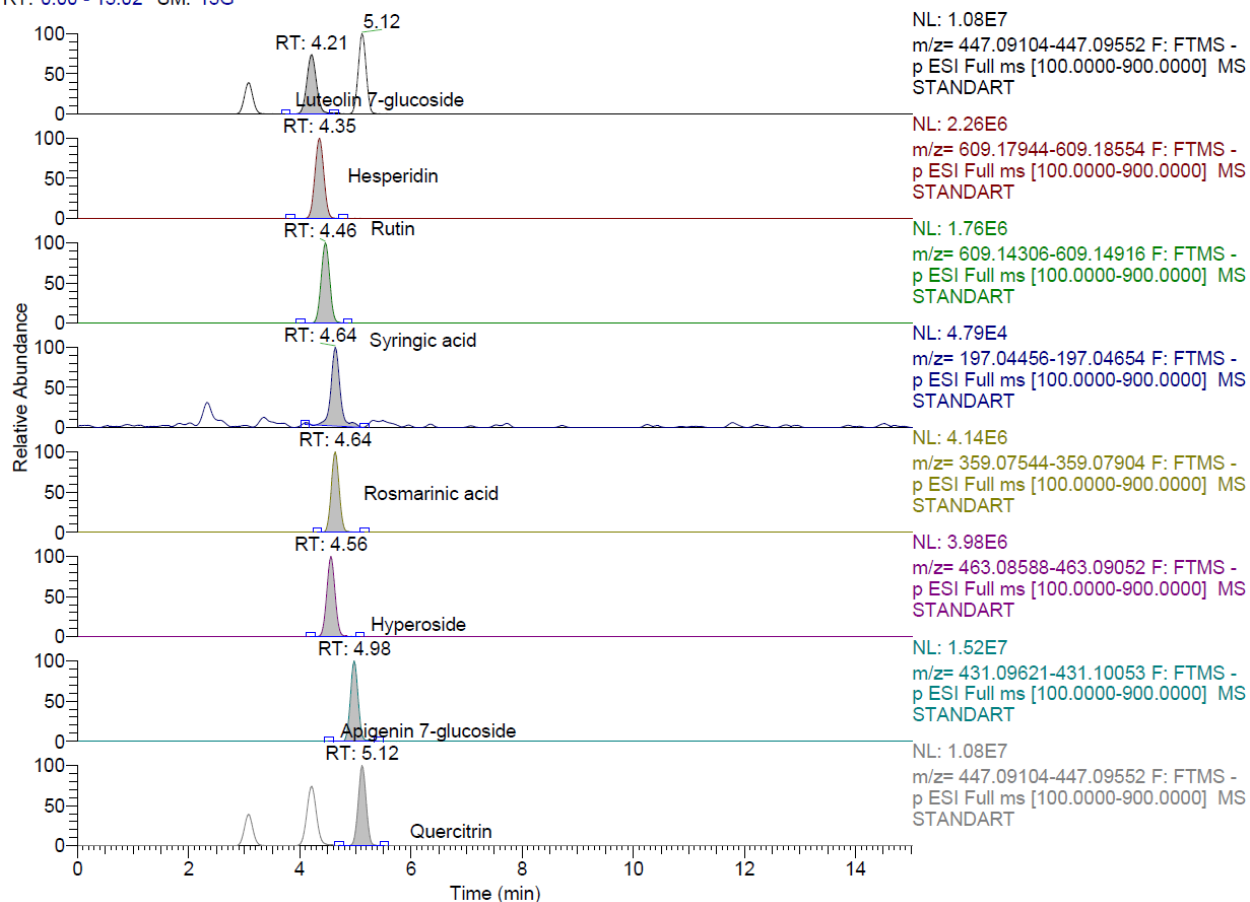
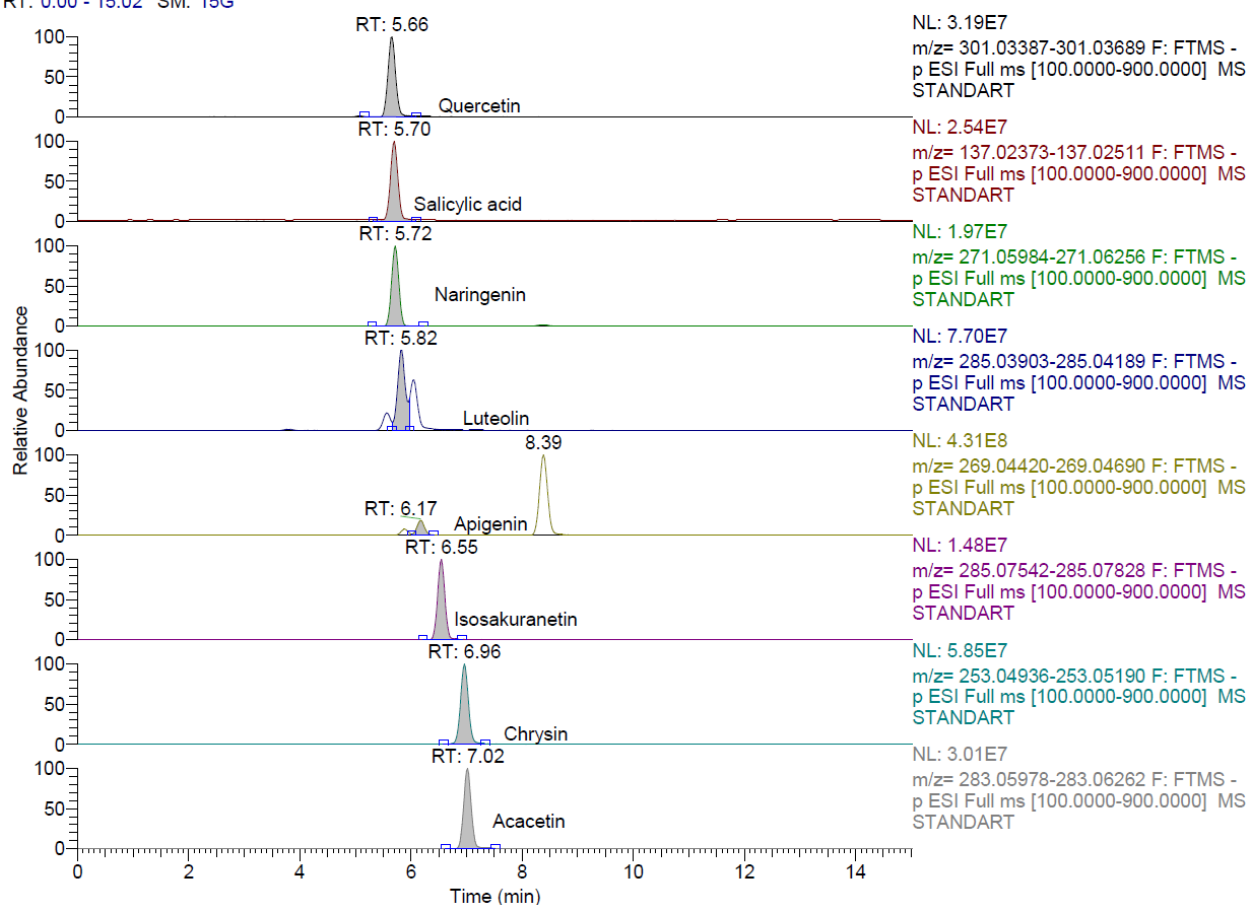


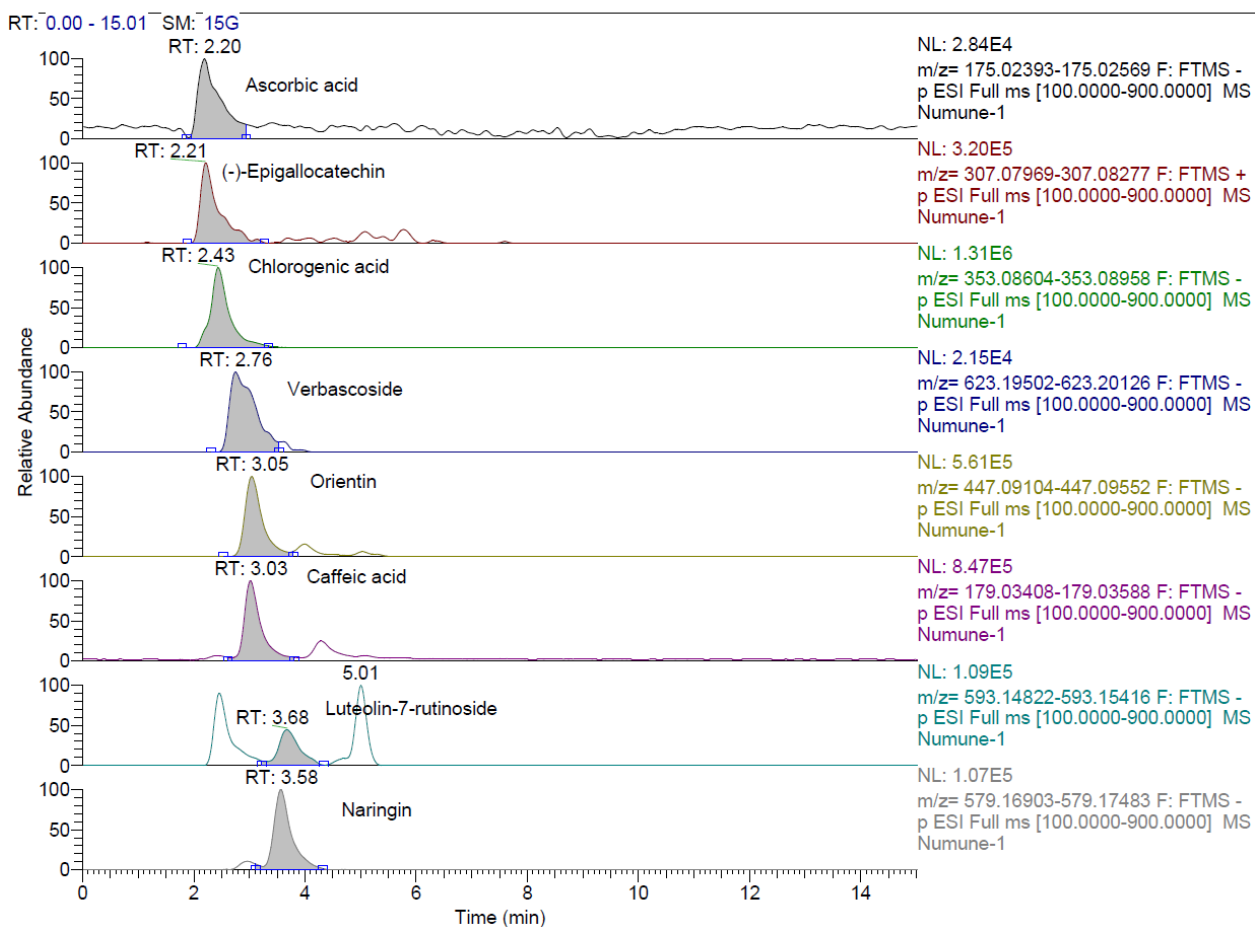
Figure S1 : LC-HRMS chromatogram of standard compounds-1

RT: 0.00 - 15.02 SM: 15G

**Figure S2 : LC-HRMS chromatogram of standard compounds-2**

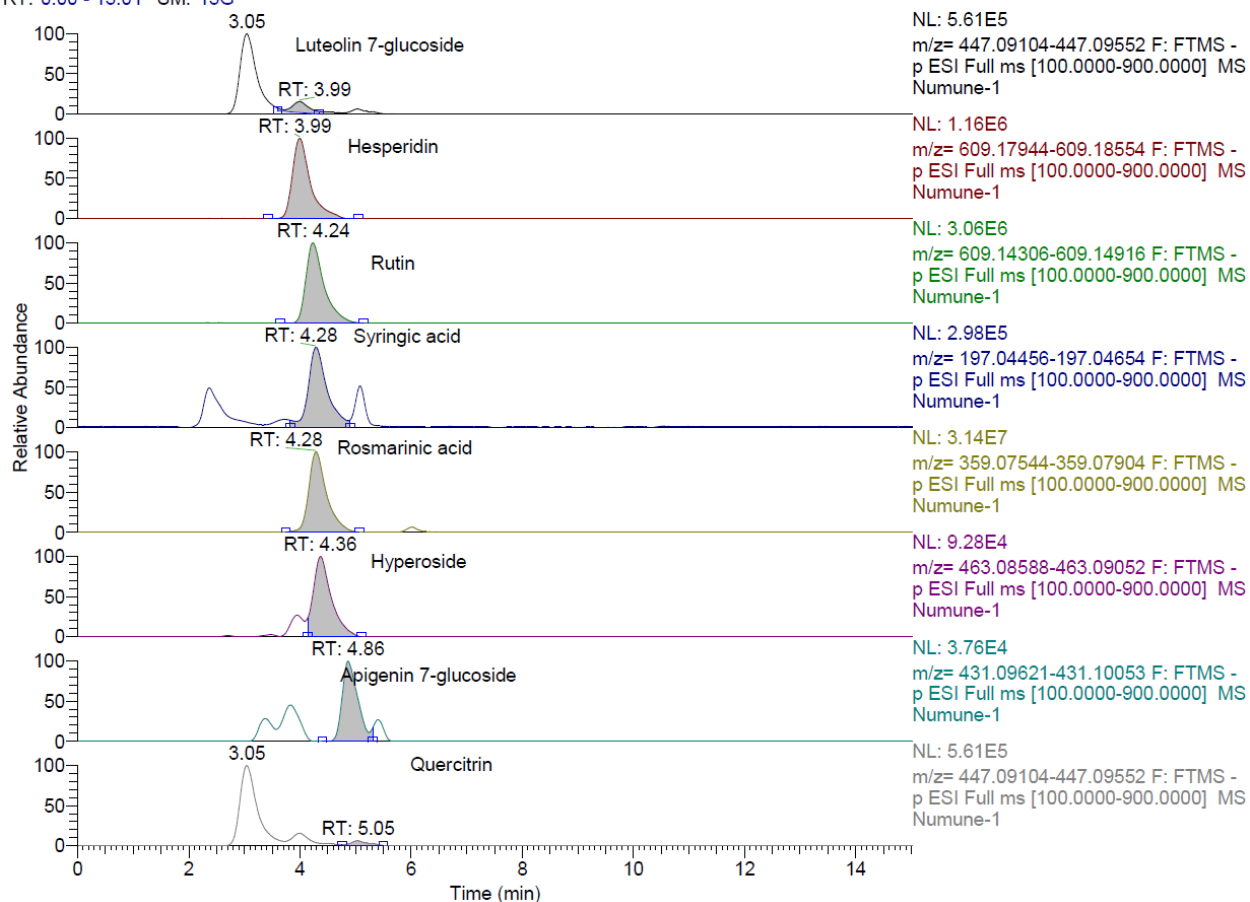
RT: 0.00 - 15.02 SM: 15G

**Figure S3 : LC-HRMS chromatogram of standard compounds-3**



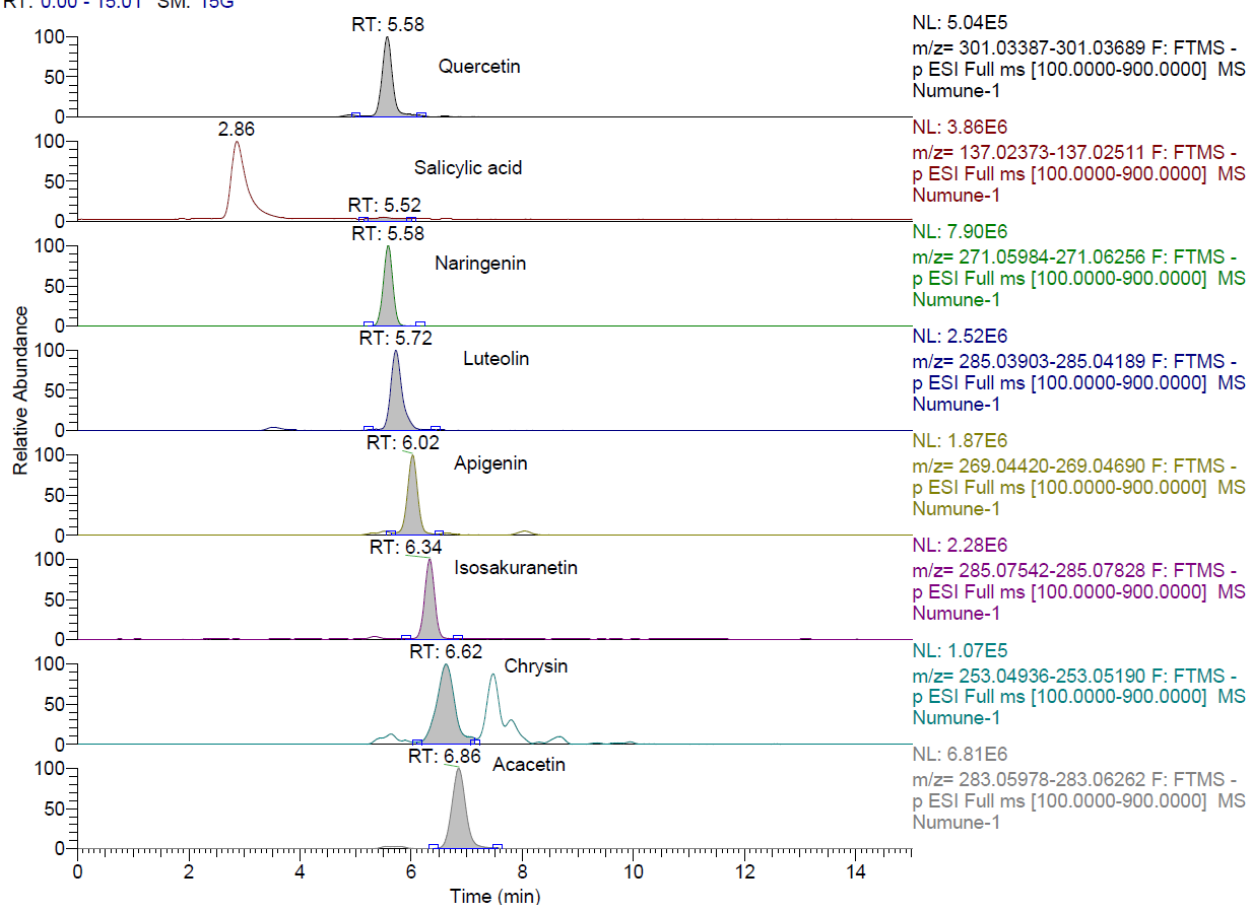
**Figure S4 :** A representative LC-HRMS chromatogram of lyophilized water extract of *Ferula orientalis* L. -1

RT: 0.00 - 15.01 SM: 15G



**Figure S5 :** A representative LC-HRMS chromatogram of lyophilized water extract of *Ferula orientalis* L.-2

RT: 0.00 - 15.01 SM: 15G



**Figure S6 :** A representative LC-HRMS chromatogram of lyophilized water extract of *Ferula orientalis* L. -3