

Supporting Information

Rec. Nat. Prod. 17:1 (2023) 179-183

Psammosilenin C, a New Cyclic Peptide from

Psammosilene tunicoides

**Xiuxia Yang, Hongrui Li, Jingxian Sun, Yong Xiong, Yanhong Li* and
Xiangzhong Huang***

*Key Laboratory of Chemistry in Ethnic Medicinal Resources, State Ethnic Affairs Commission
and Ministry of Education, Yunnan Minzu University, Kunming, 650504, Yunnan, China*

Table of Contents	Page
Figure S1: The IR spectrum of 1 (psammosilenin C)	2
Figure S2: HR-ESI-MS spectrum of 1 (psammosilenin C)	2
Figure S3: ¹ H-NMR (400 MHz, CD ₃ OD) spectrum of 1 (psammosilenin C)	3
Figure S4: ¹³ C- and DEPT NMR (100 MHz, CD ₃ OD) spectrum of 1 (psammosilenin C)	4
Figure S5: HSQC spectrum of 1 (psammosilenin C)	5
Figure S6: HSQC spectrum of 1 (psammosilenin C) (From δ_C 35 ppm to δ_C 70 ppm)	6
Figure S7: HSQC spectrum of 1 (psammosilenin C) (From δ_C 10 ppm to δ_C 40 ppm)	6
Figure S8: HMBC spectrum of 1 (psammosilenin C)	7
Figure S9: HMBC spectrum of 1 (psammosilenin C) (From δ_H 4.15 ppm to δ_H 4.95 ppm)	8
Figure S10: HMBC spectrum of 1 (psammosilenin C) (From δ_H 3.89 ppm to δ_H 4.11 ppm)	9
Figure S11: HMBC spectrum of 1 (psammosilenin C) (From δ_H 1.1 ppm to δ_H 3.5 ppm)	10
Figure S12: ¹ H- ¹ H COSY spectrum of 1 (psammosilenin C)	11
Figure S13: TCOSY spectrum of 1 (psammosilenin C)	11
Figure S14: NOESY spectrum of 1 (psammosilenin C)	12
Figure S15: HR-ESI-MS ² spectrum of 1 (psammosilenin C)	13-18

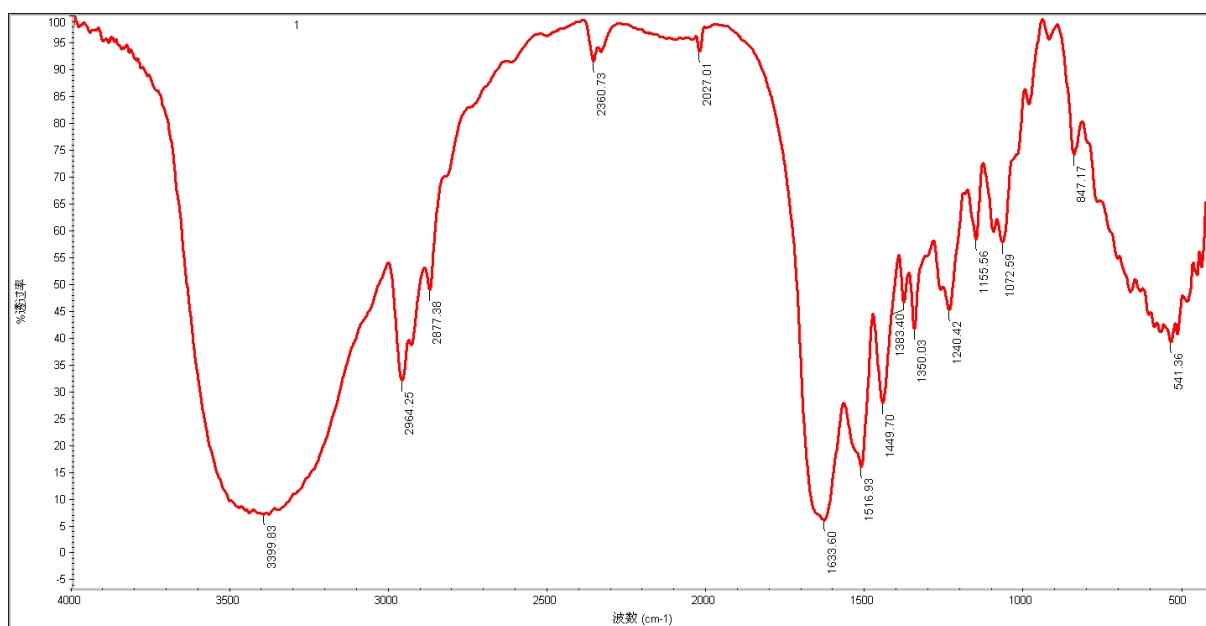


Figure S1: The IR spectrum of **1** (psammosilenin C)

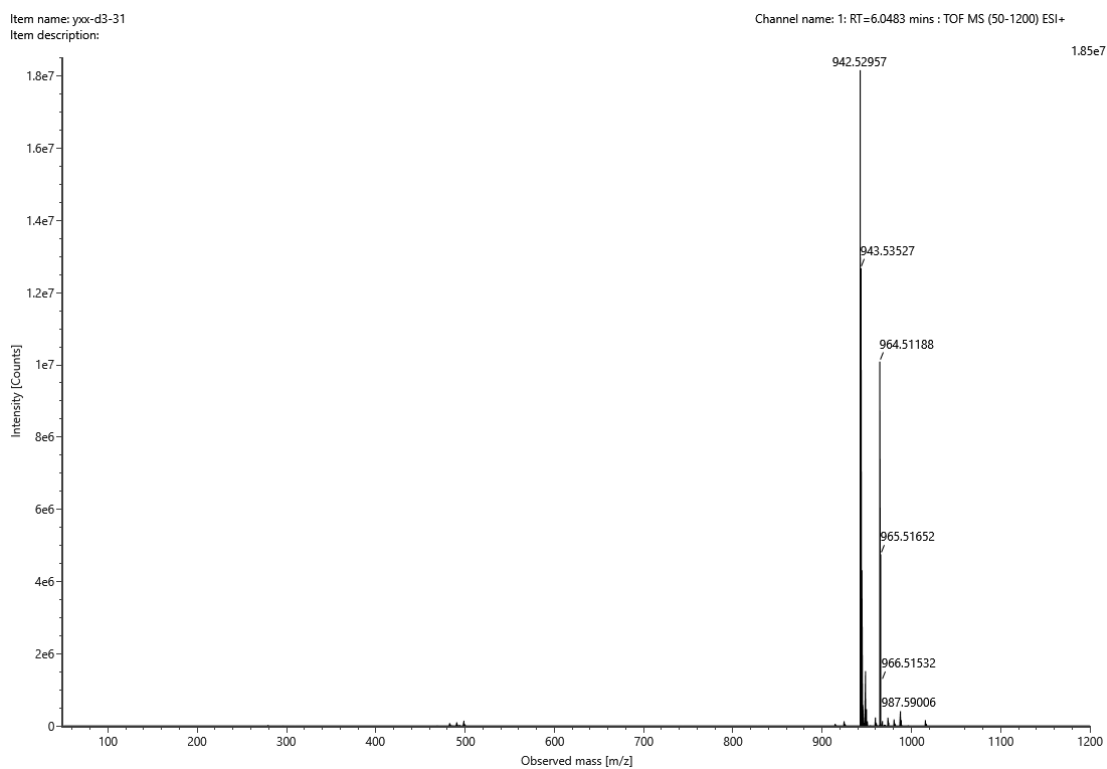


Figure S2: HR-ESI-MS spectrum of **1** (psammosilenin C)

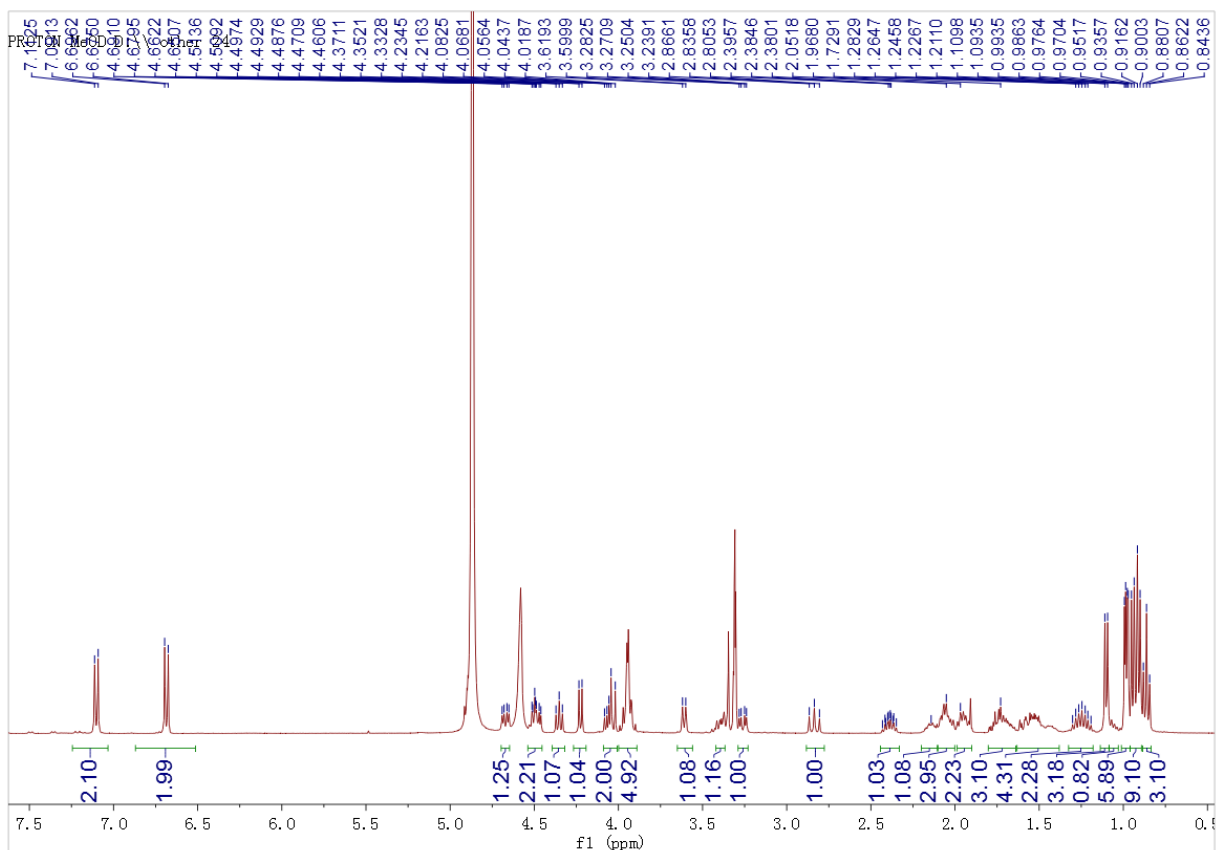


Figure S3: $^1\text{H-NMR}$ (400 MHz, CDCl_3) spectrum of **1** (psammosilenin C)

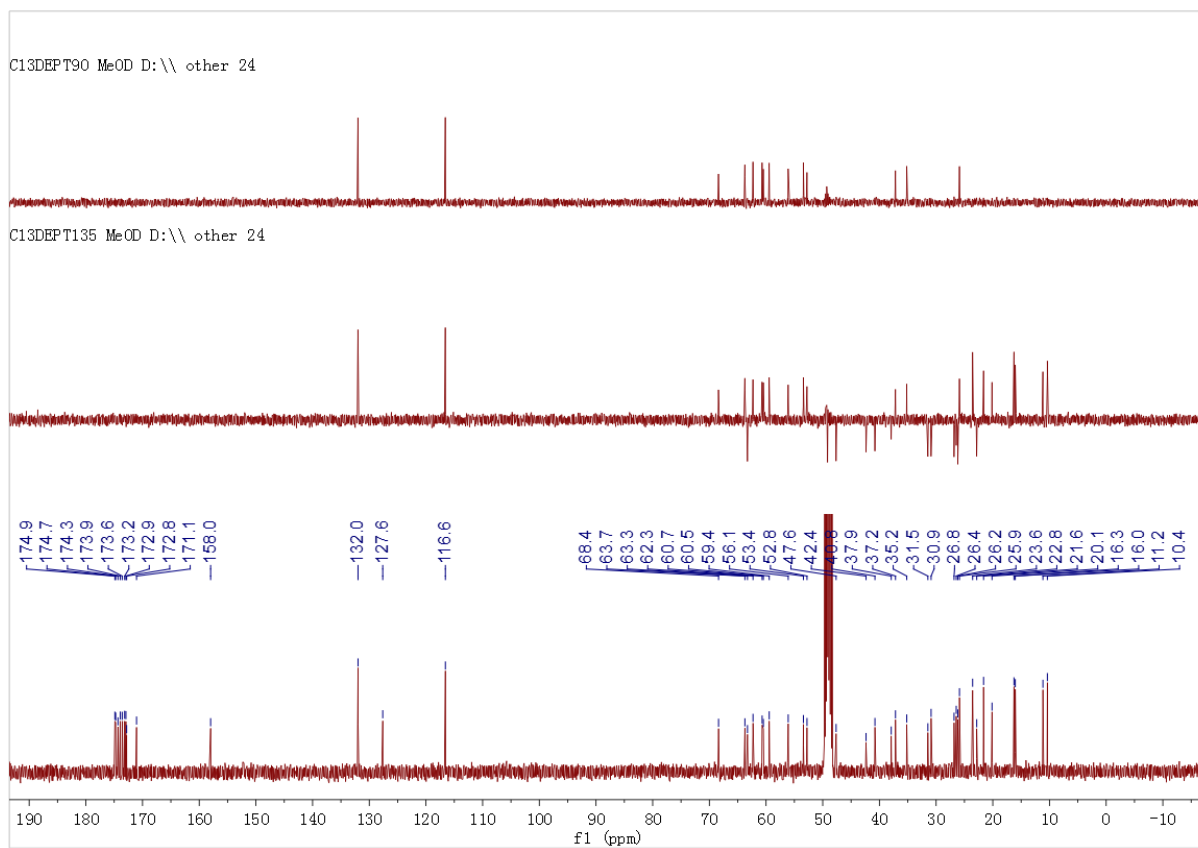


Figure S4: ^{13}C - and DEPT NMR (100 MHz, CD_3OD) spectrum of **1** (psammosilenin C)

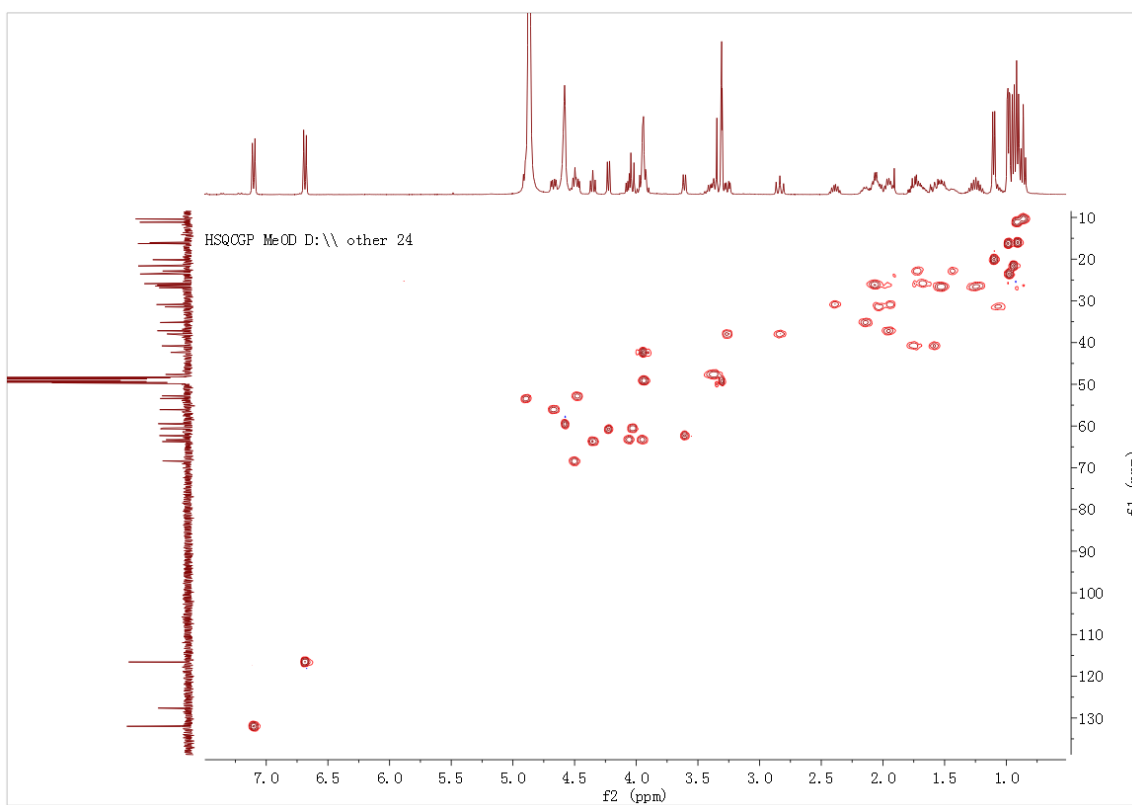


Figure S5: HSQC spectrum of **1** (psammosilenin C)

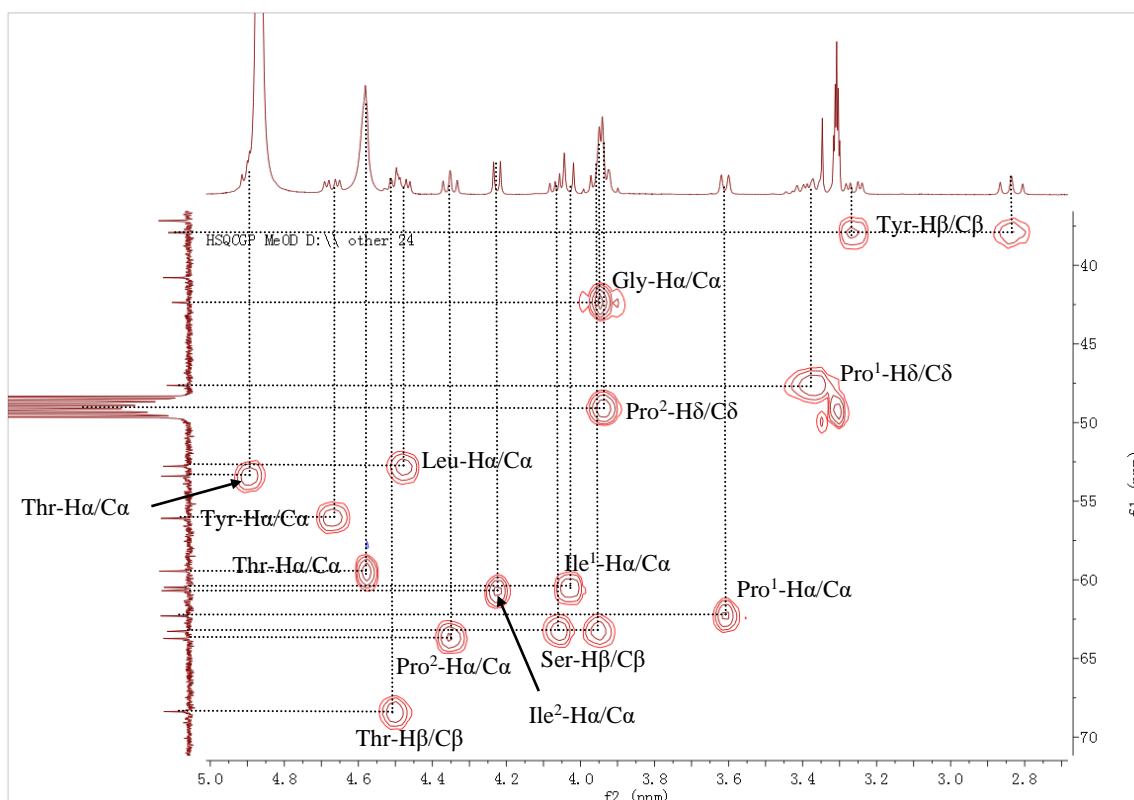


Figure S6: HSQC spectrum of **1** (psammosilenin C) (From δ_C 35 ppm to δ_C 70 ppm)

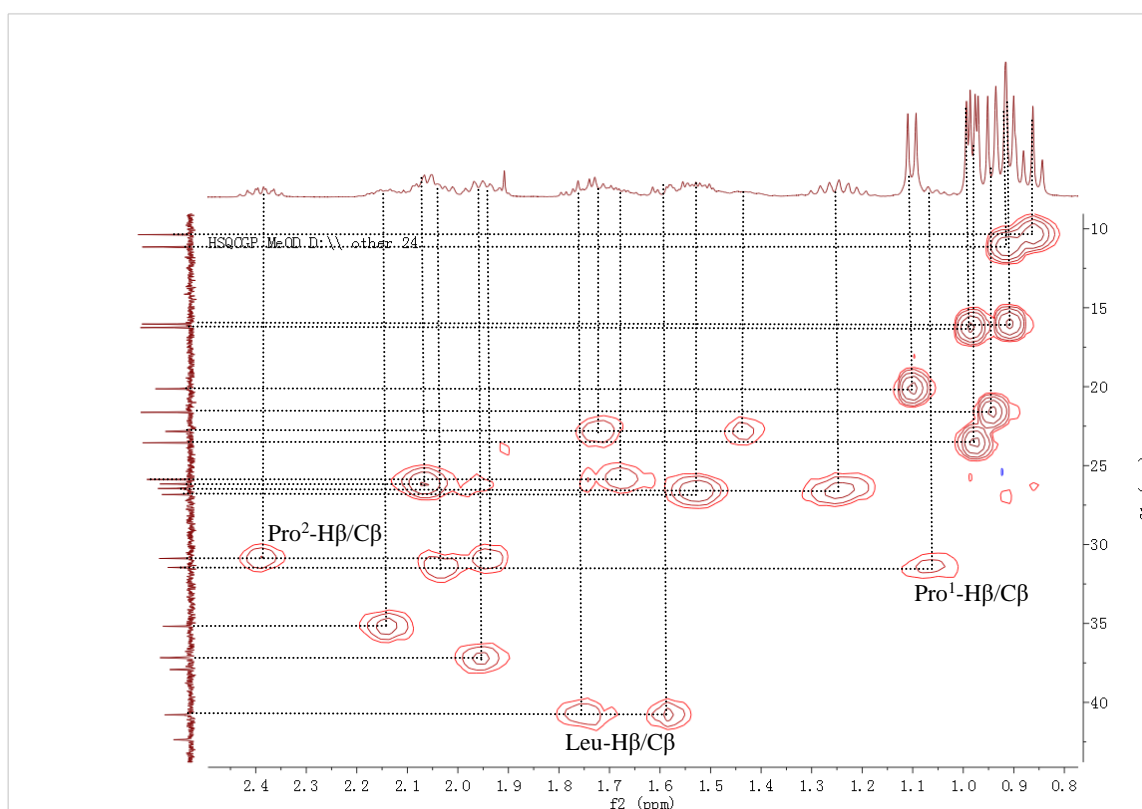


Figure S7: HSQC spectrum of **1** (psammosilenin C) (From δ_C 10 ppm to δ_C 40 ppm)

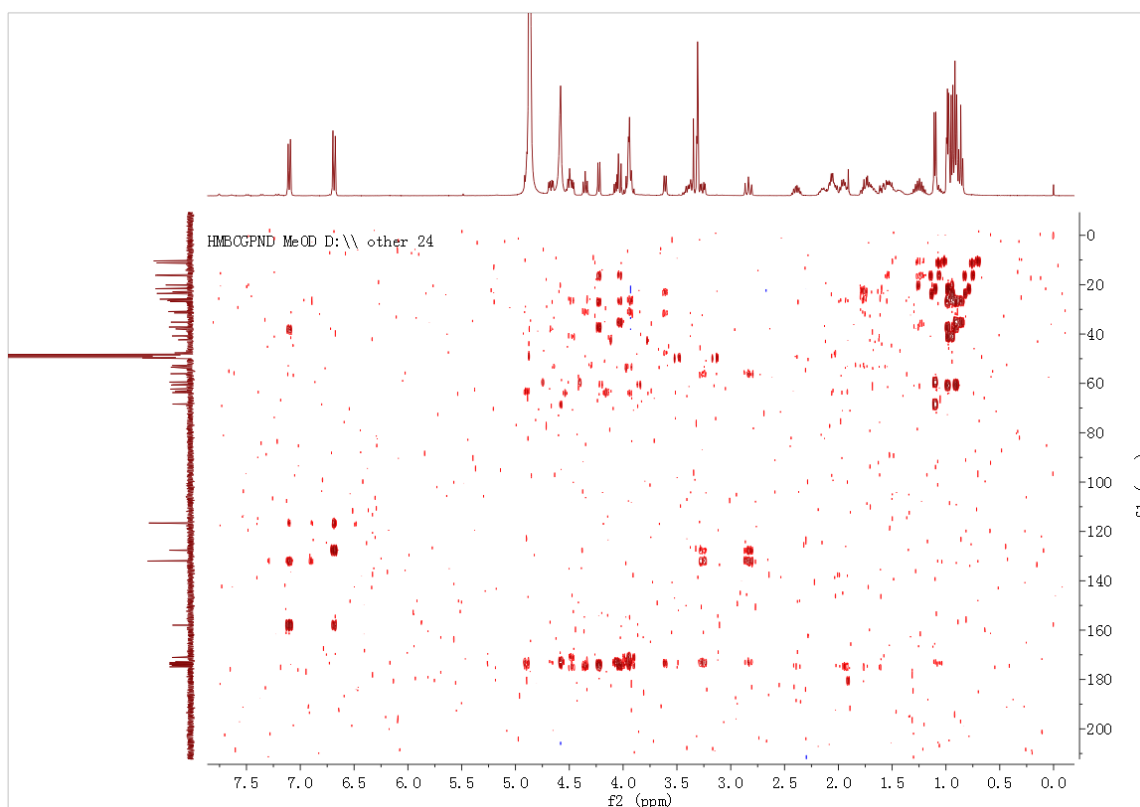


Figure S8: HMBC spectrum of **1** (psammosilenin C)

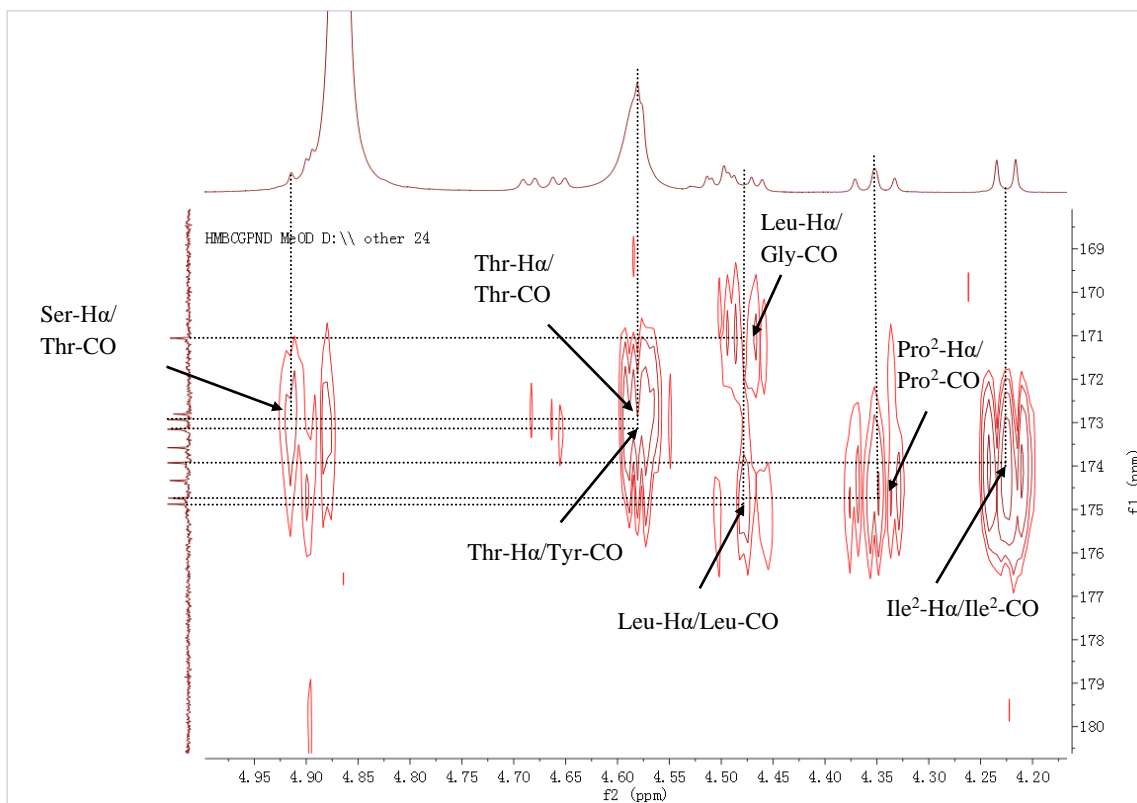


Figure S9: HMBC spectrum of **1** (psammosilenin C) (From δ_{H} 4.15 ppm to δ_{H} 4.95 ppm)

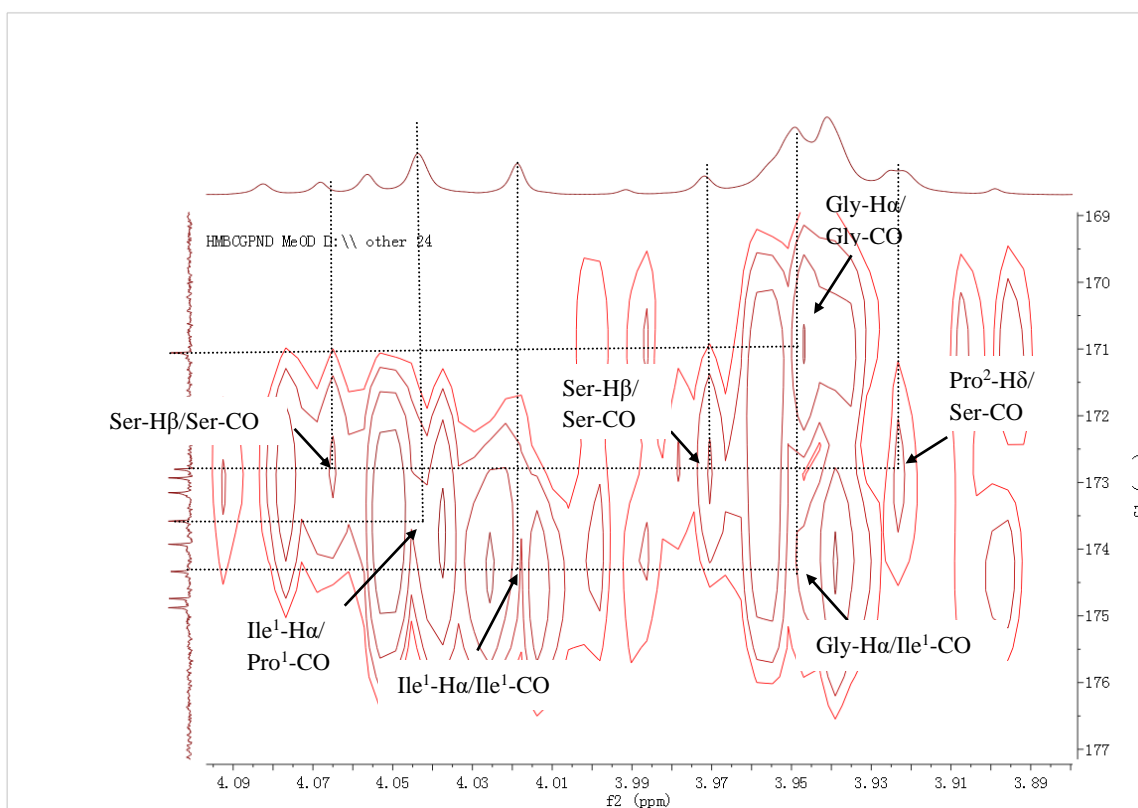


Figure S10: HMBC spectrum of **1** (psammosilenin C) (From δ_{H} 3.89 ppm to δ_{H} 4.11 ppm)

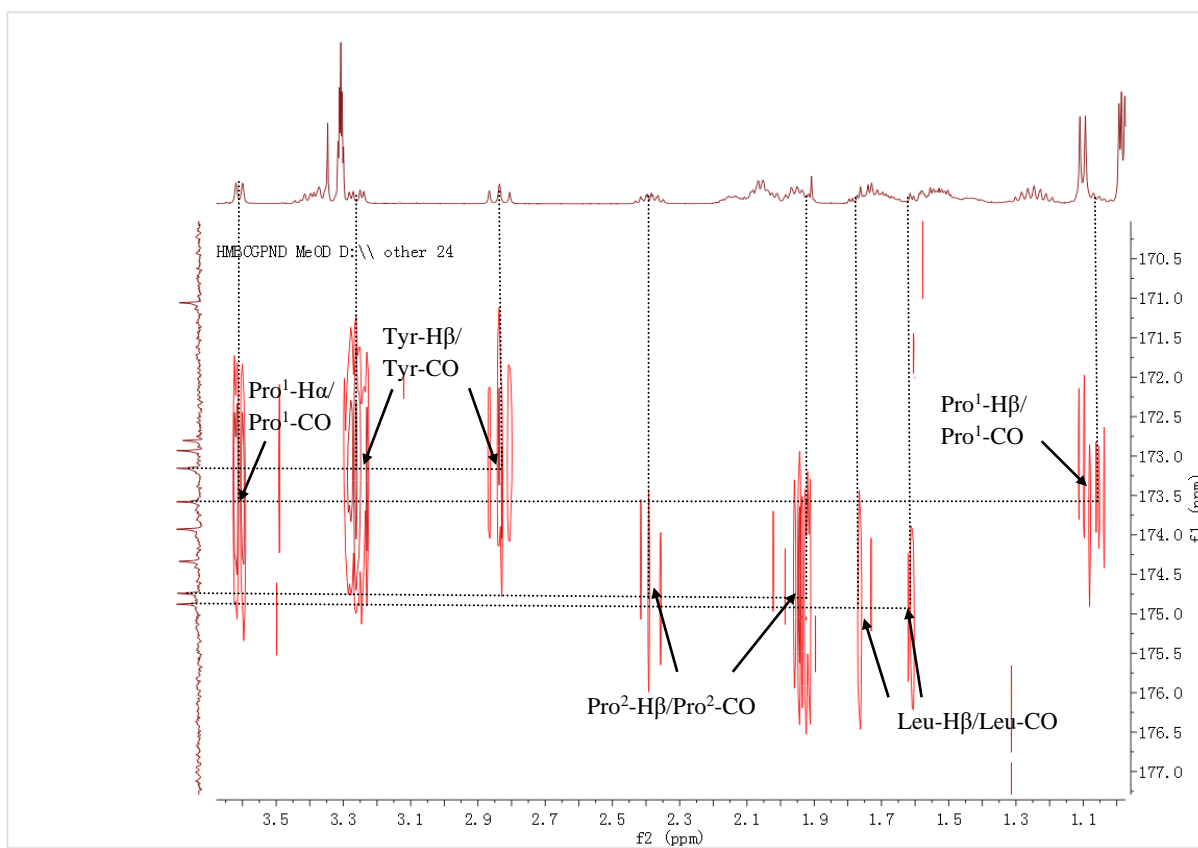


Figure S11: HMBC spectrum of **1** (psammosilenin C) (From δ_H 1.1 ppm to δ_H 3.5 ppm)

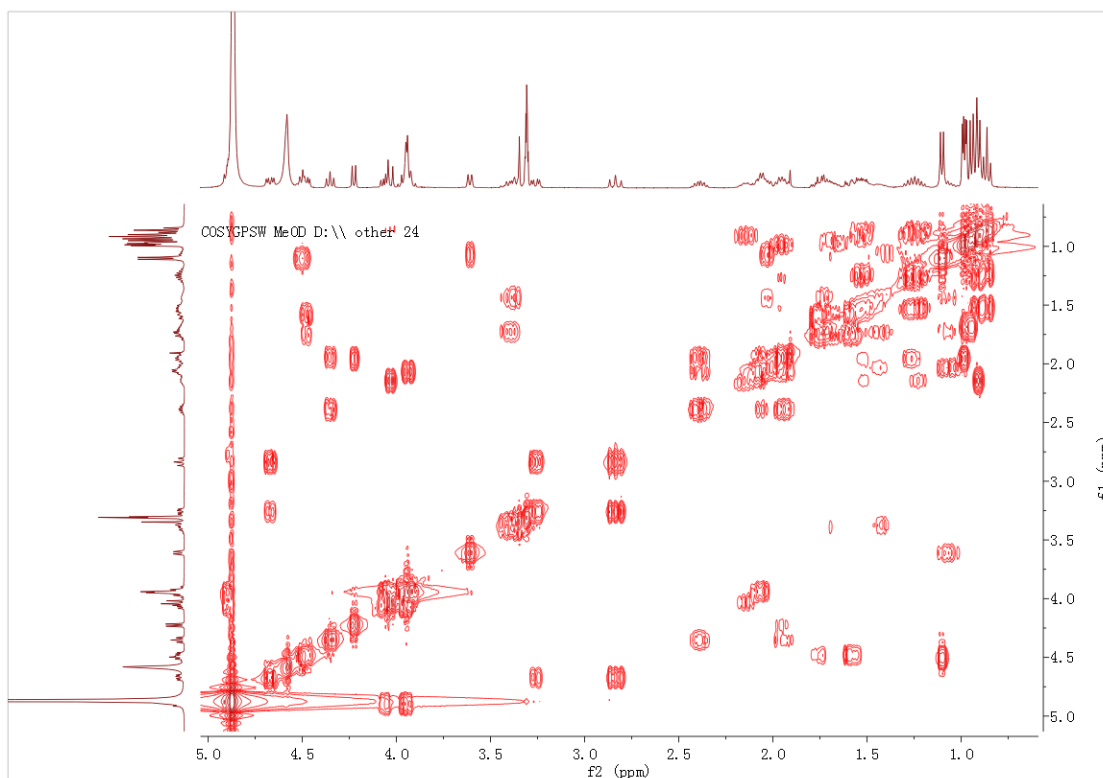


Figure S12: ^1H - ^1H COSY spectrum of **1** (psammosilenin C)

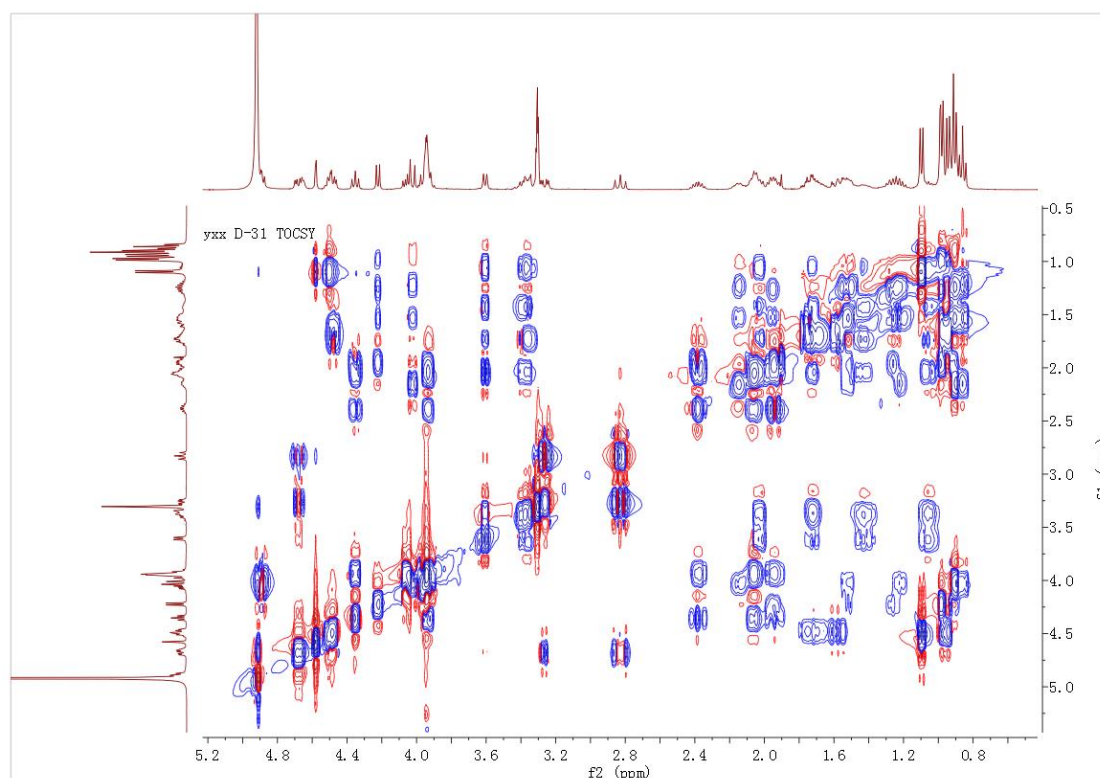


Figure S13: TOCSY spectrum of **1** (psammosilenin C)

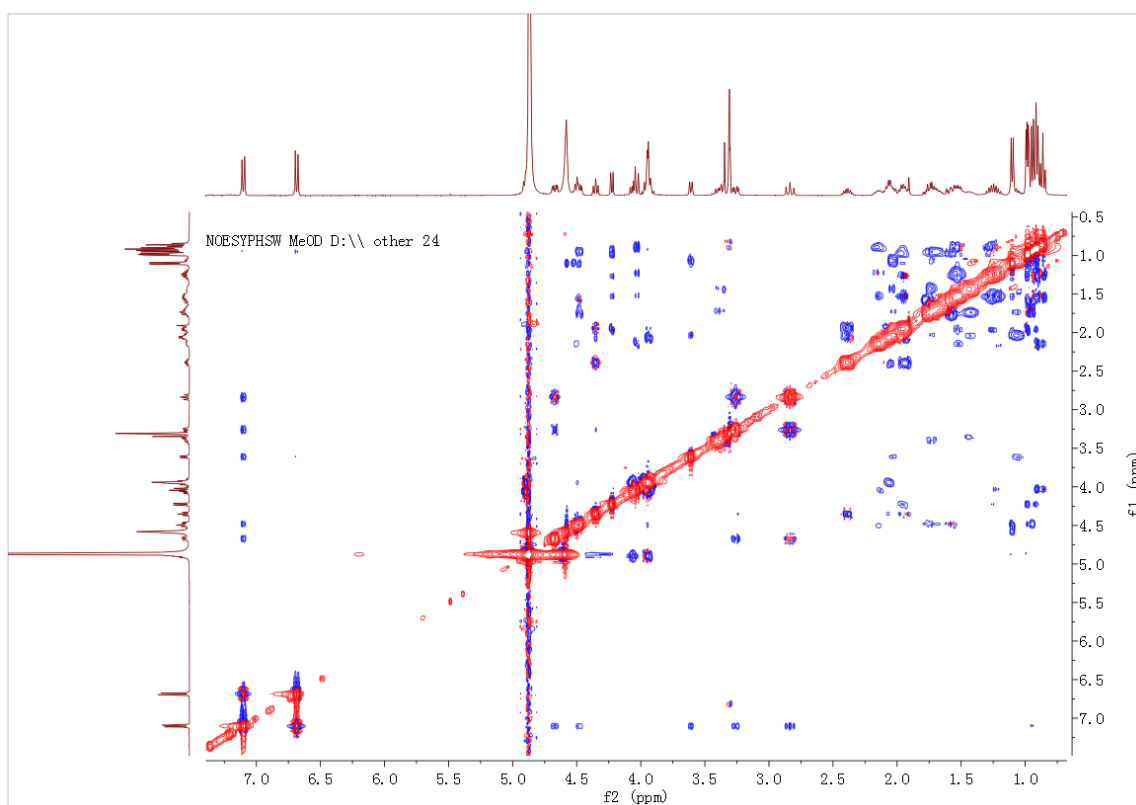
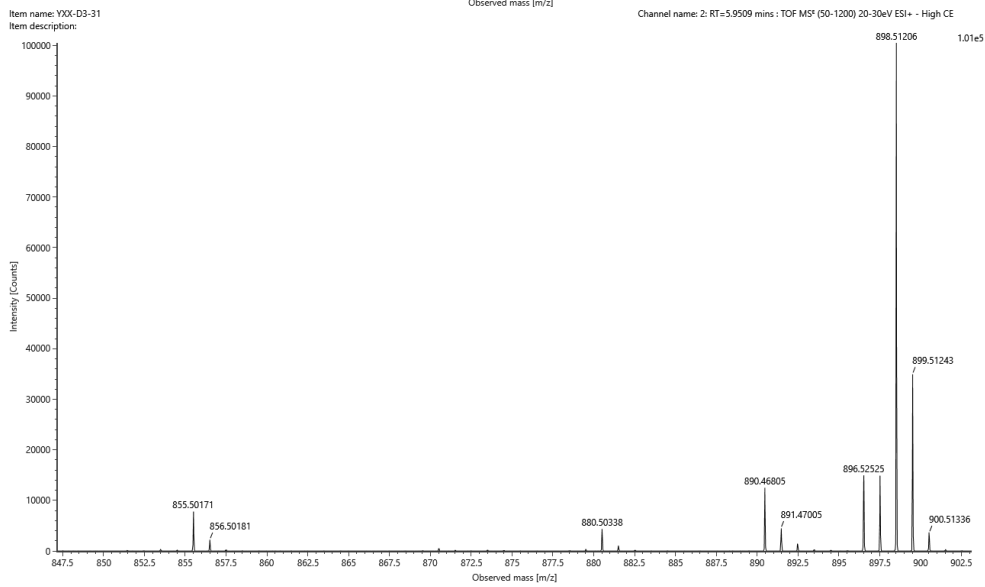
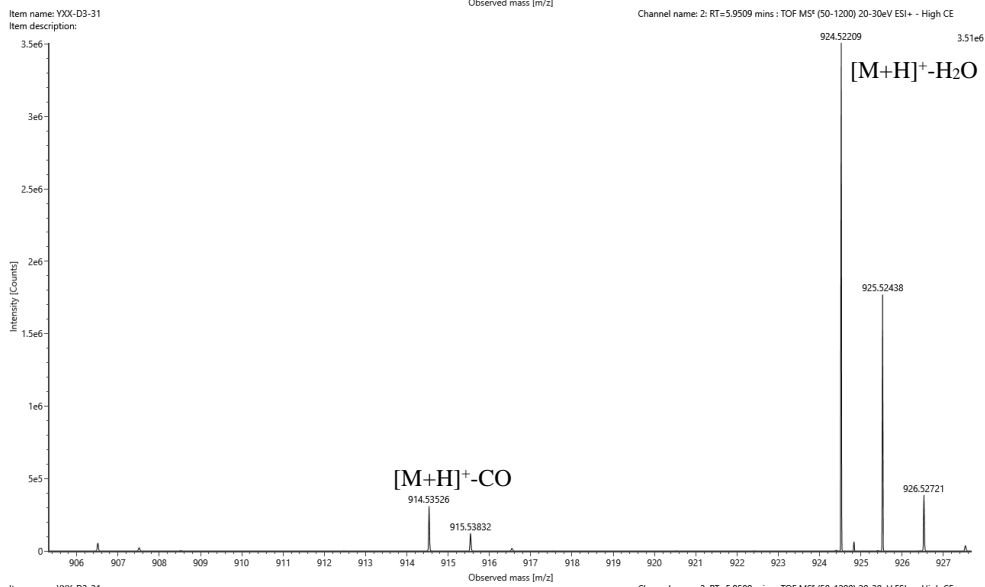
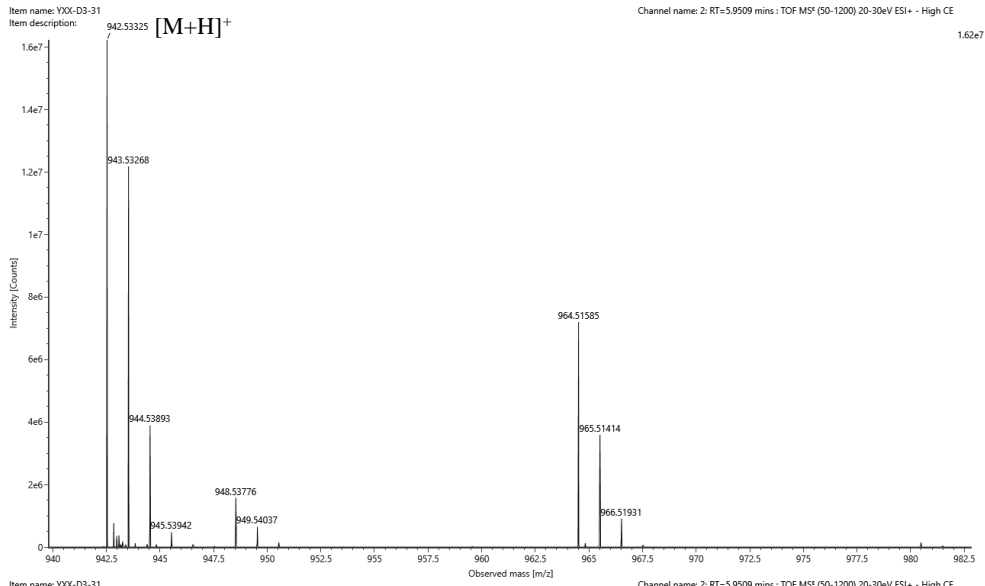
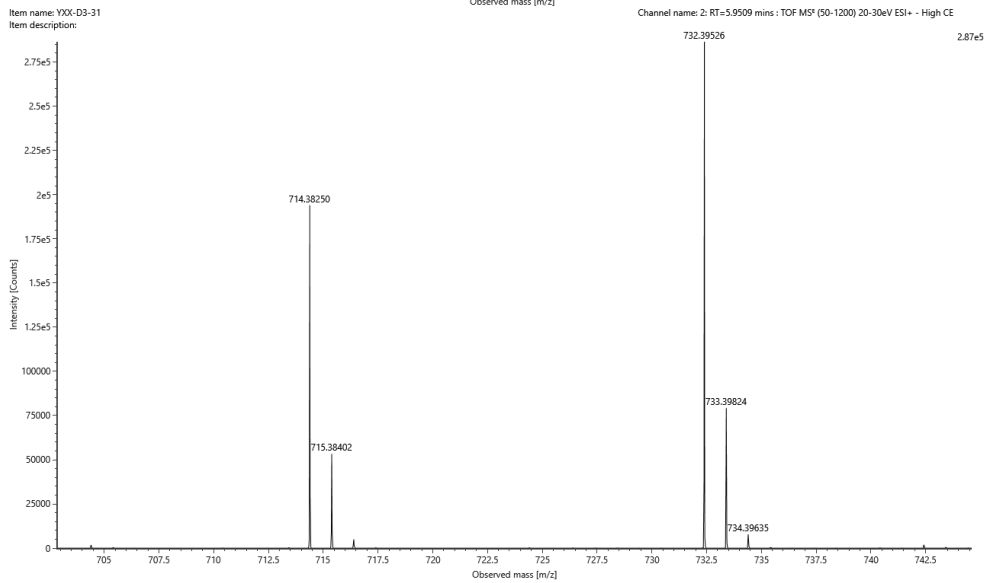
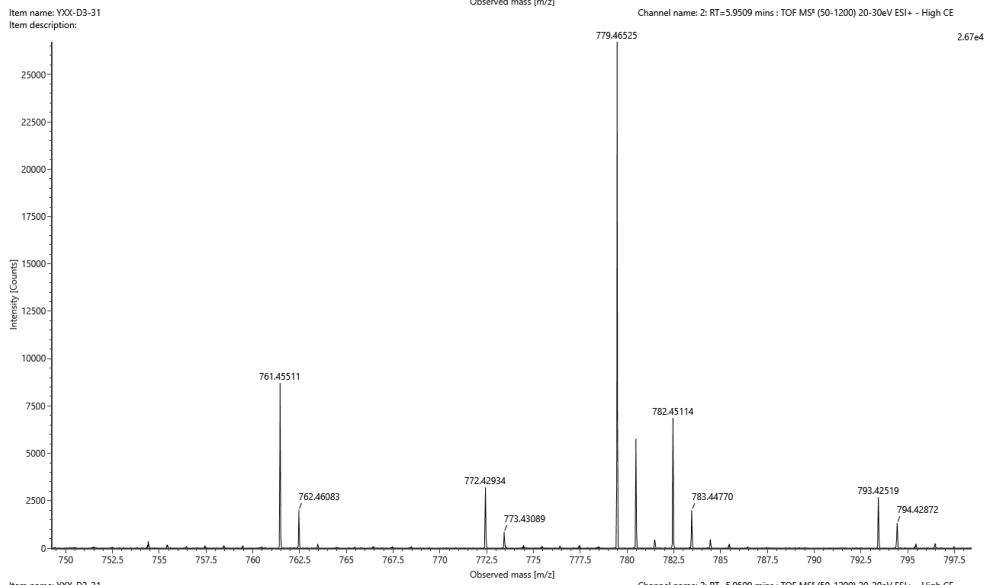
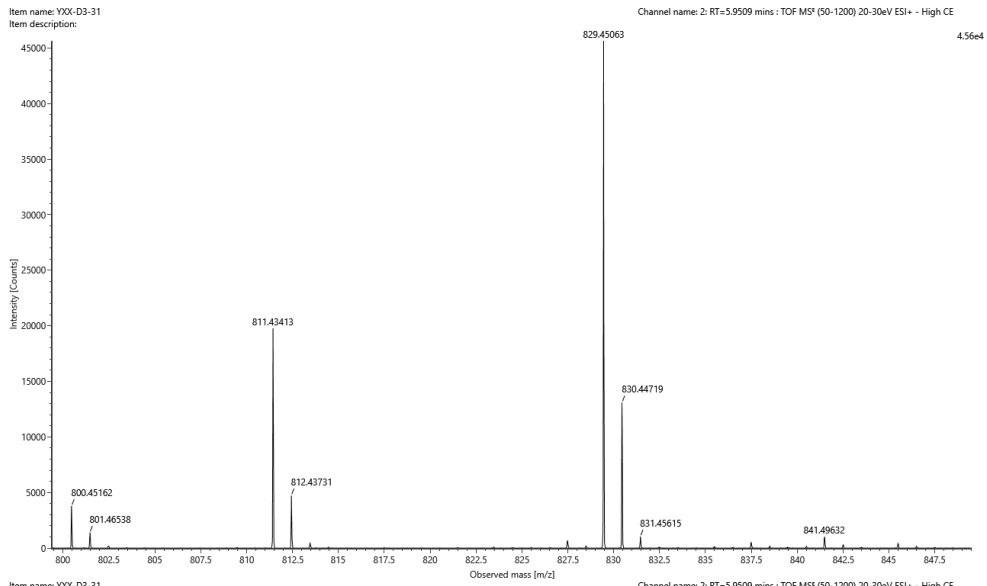
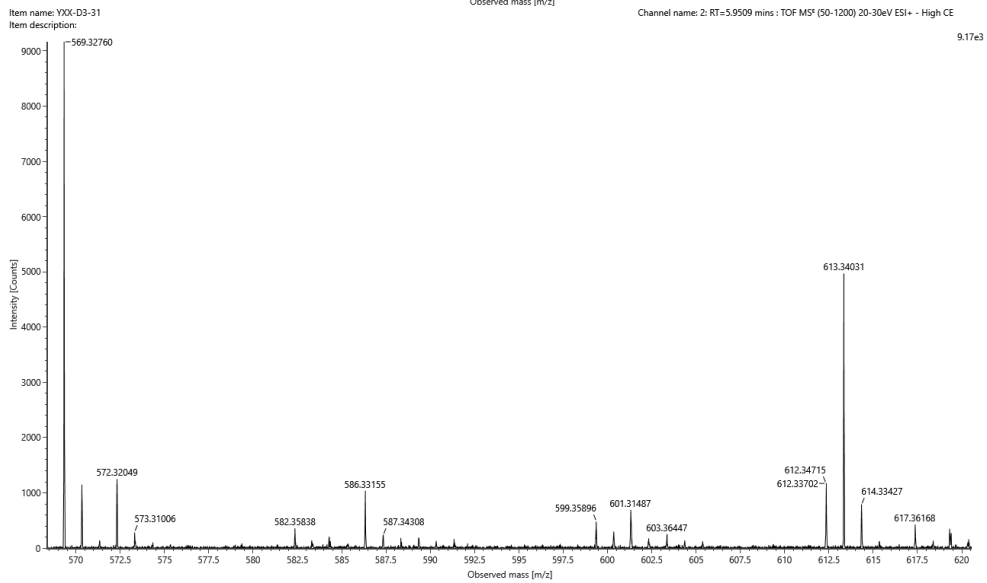
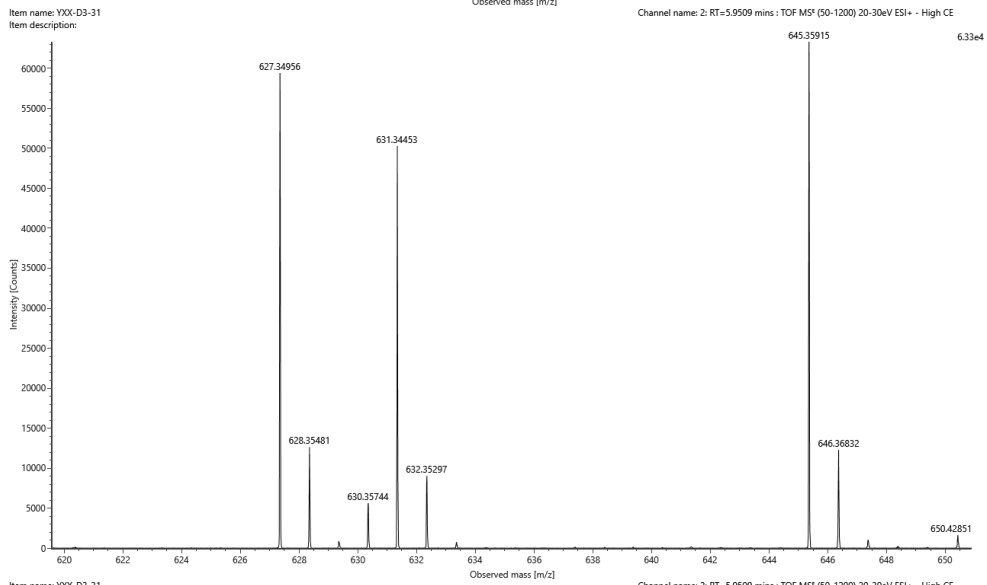
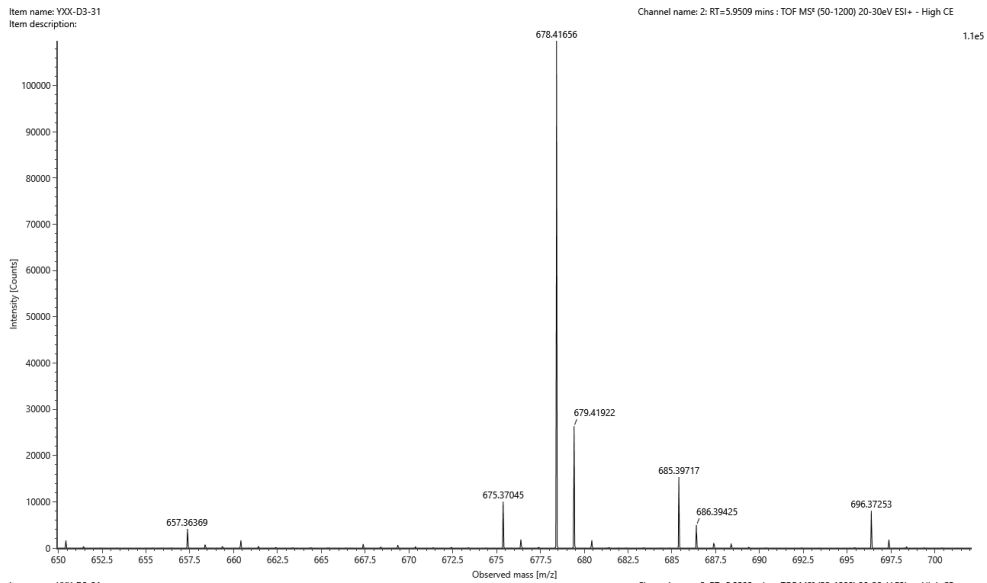
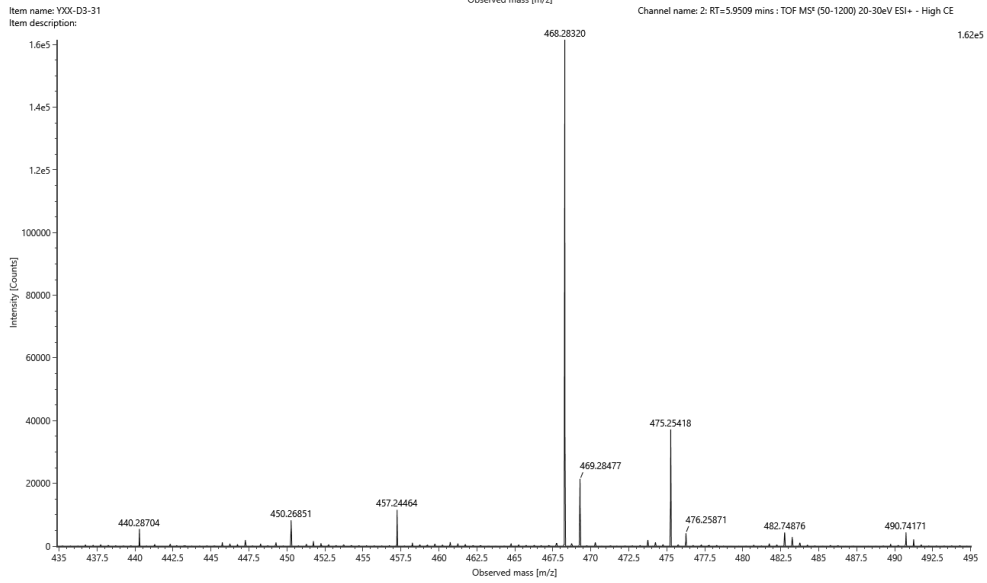
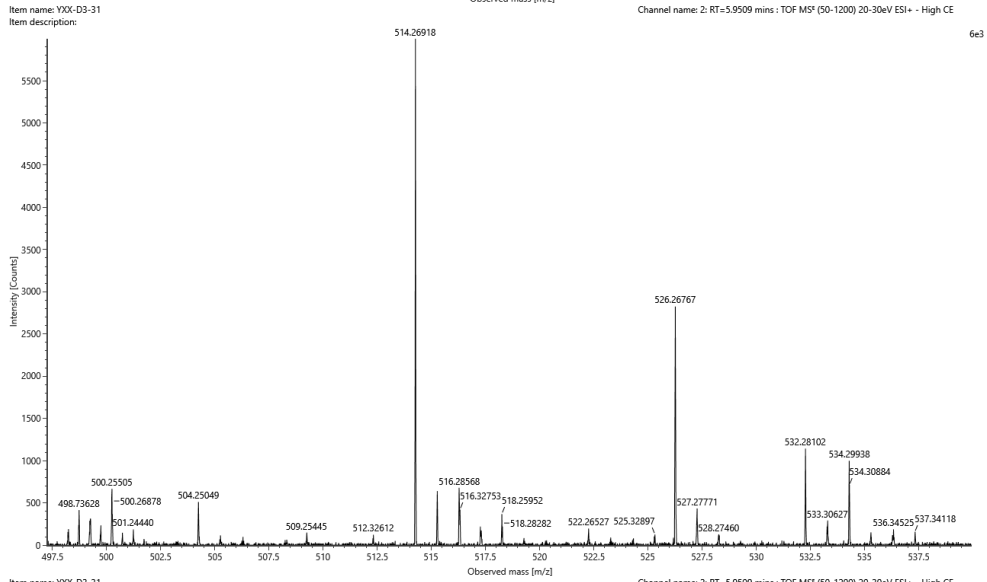
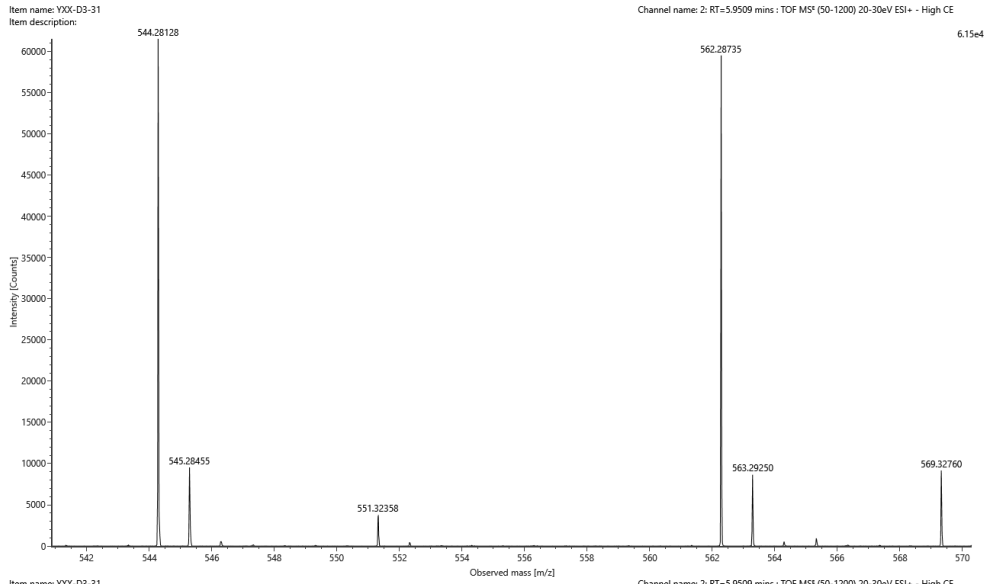


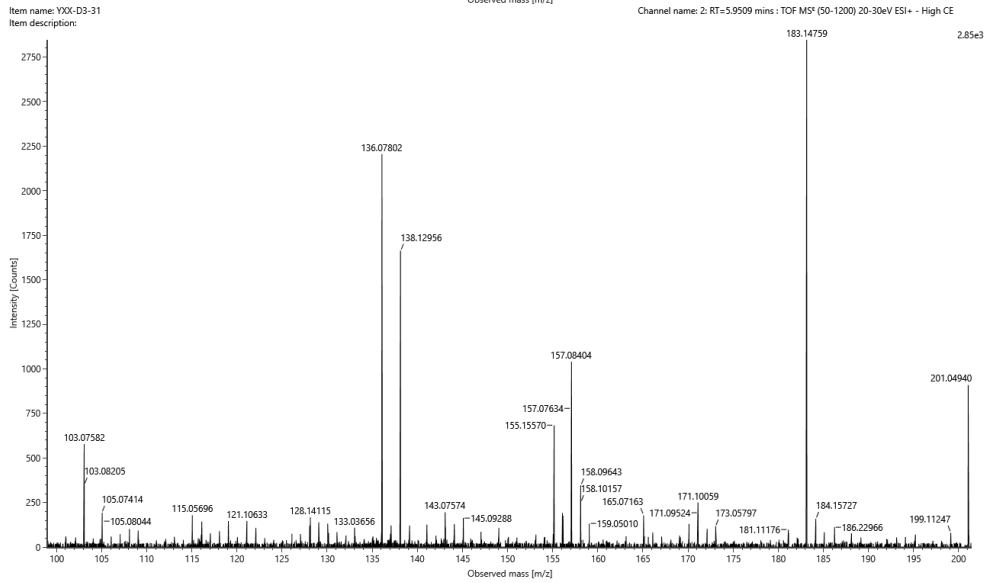
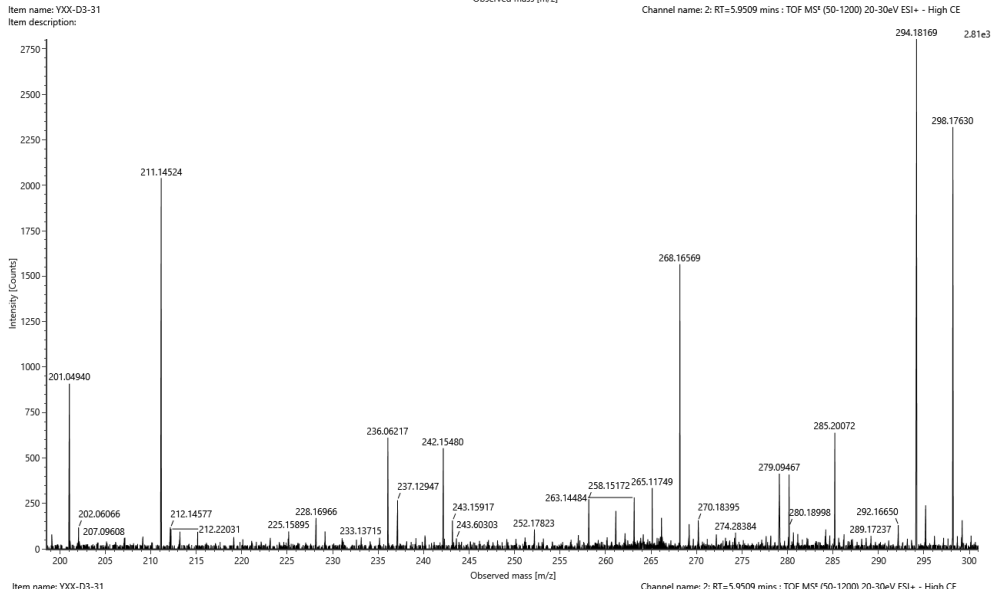
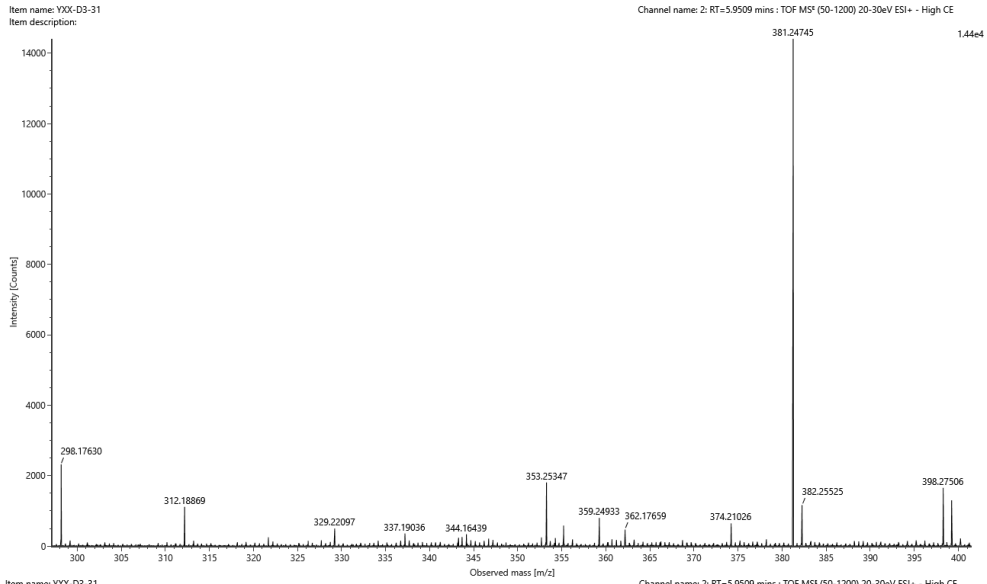
Figure S14: NOESY spectrum of **1** (psammosilenin C)











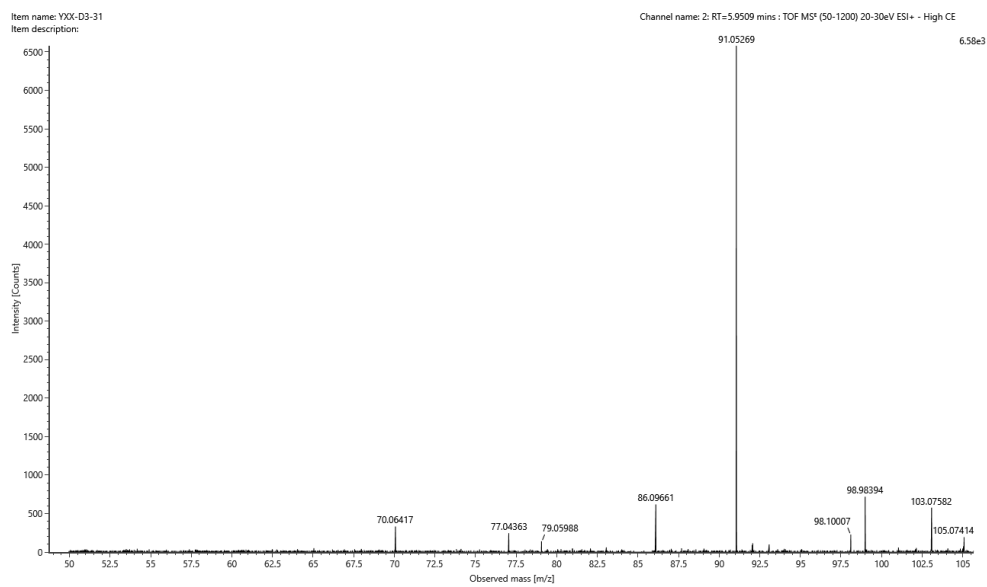


Figure S15: HR-ESI-MS² spectrum of **1** (psammosilenin C)