

Supporting Information

Rec. Nat. Prod. X:X (202X) XX-XX

Structure Characterization and Anti-tumor Activity of Polysaccharides from *Rohdea chinensis*

Shihao Zhang ¹, Minghua Ma ³, Sicheng Liu ¹, Guoce Jin ¹,
Wencong Li ¹, Yu Zhao ¹, Yanyu Li ¹, Xueyan Li ¹, Zixuan Zhu ¹,
Chengxiong Liu ¹, Zhaoxia Liu ^{1*}, Xiaocong Li ^{2*} and Kun Zou

¹ Key Laboratory of Natural Products Research and Utilization in Hubei Province, China Three Gorges University, Yichang, Hubei 443002, P. R. China

² College of Medicine, Hubei Three Gorges Polytechnic, Yichang, Hubei 443002, P. R. China

³ Yichang Forest Fire Prevention Center, Yichang, Hubei 443000, P. R. China

Table of Contents	Page
Figure S1: Sephadex G-200 spectrum of RCP-C1-1, 2, and 3	2
Figure S2: UHPGC spectrum of RCP-C1-1, 2, and 3	3
Figure S3: MALDI-TOF MS spectrum of RCP-C1-1, 2, and 3	4
Figure S4: FT-IR spectrum of RCP-C1-1, 2, and 3	5
Figure S5: HR-ESI-MS spectrum of RCP-C1-1	6
Figure S6: ¹ H-NMR spectrum of RCP-C1-1, 2, and 3	7
Figure S7: ¹³ C-NMR spectrum of RCP-C1-1, 2, and 3	8
Figure S8: DEPT135 spectrum of RCP-C1-1, 2, and 3	9
Figure S9: HSQC spectrum of RCP-C1-1, 2, and 3	10
Figure S10: HMBC spectrum of RCP-C1-1, 2, and 3	11

*Corresponding authors E-Mail : 27976574@qq.com; Phone:086-13986790811 (L. Zhaoxia);
81626525@qq.com ; Phone:086-18995871818 (L. Xiaocong)

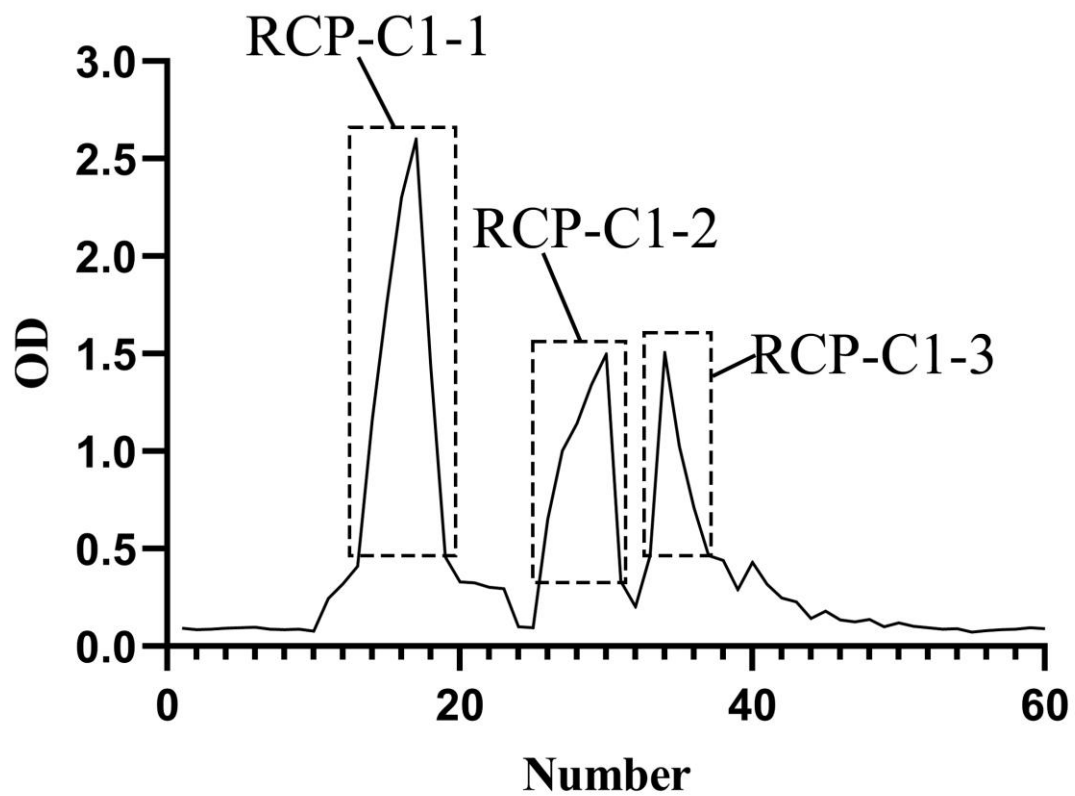


Figure S1: Sephadex G-200 spectrum of RCP-C1-1, 2, and 3.

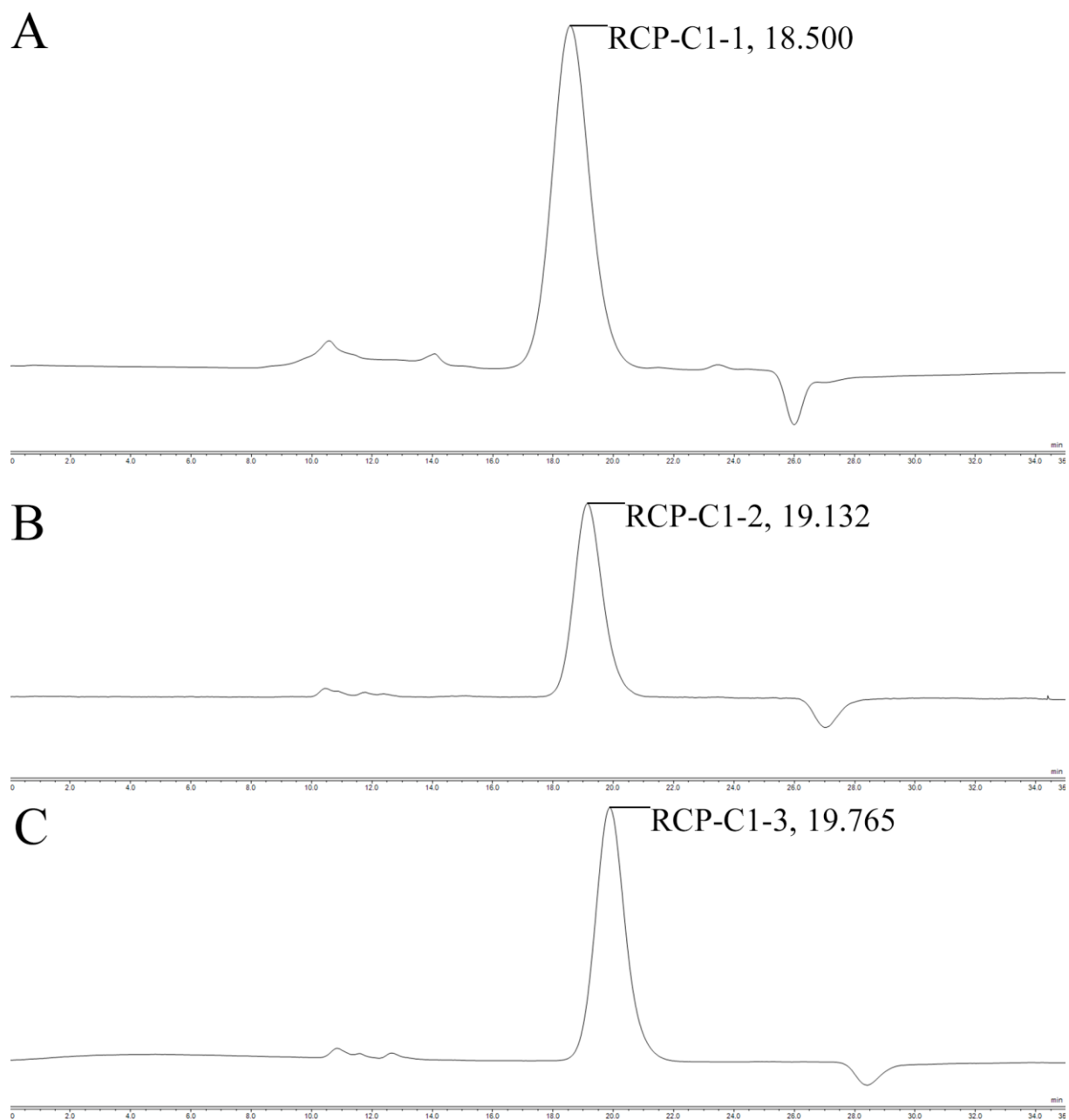


Figure S2: UHPLC spectrum of RCP-C1-1, 2, and 3.

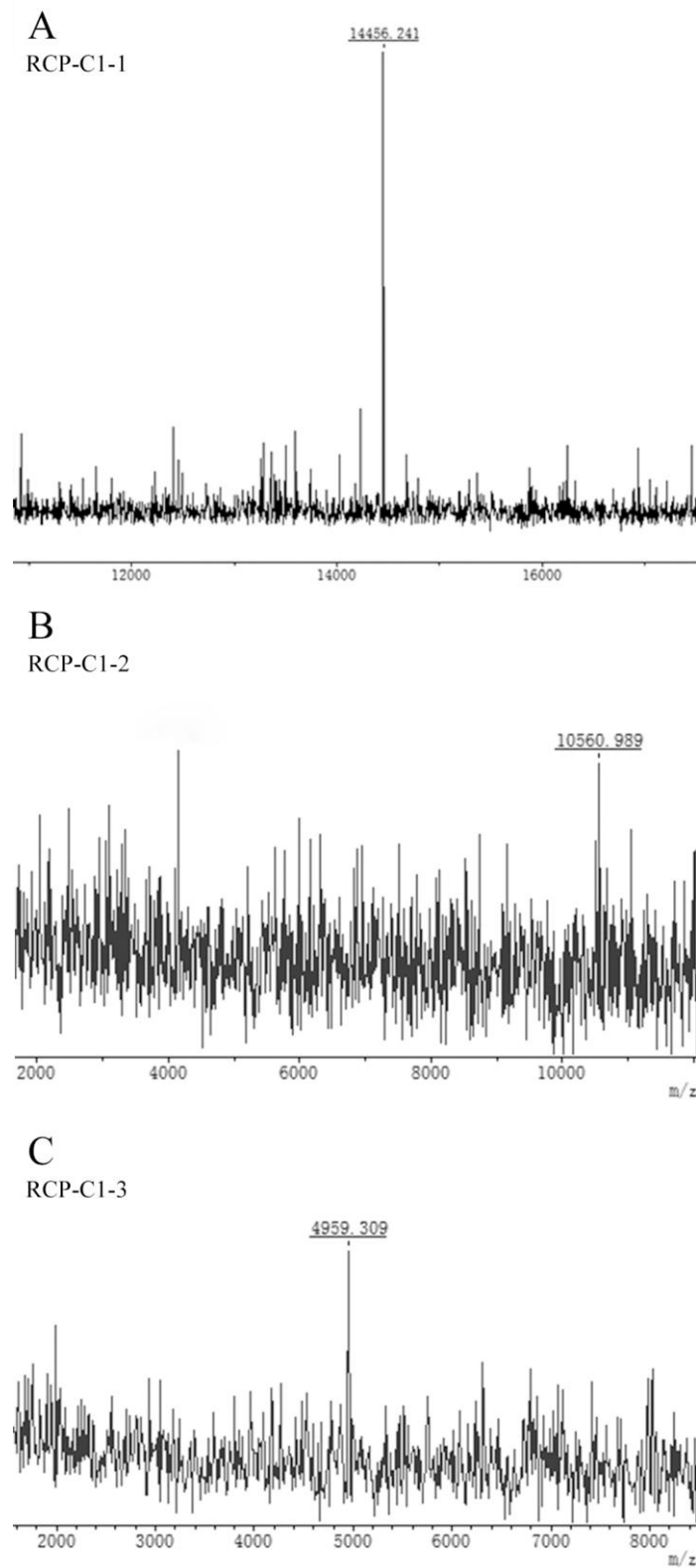


Figure S3: MALDI-TOF MS spectrum of RCP-C1-1, 2, and 3.

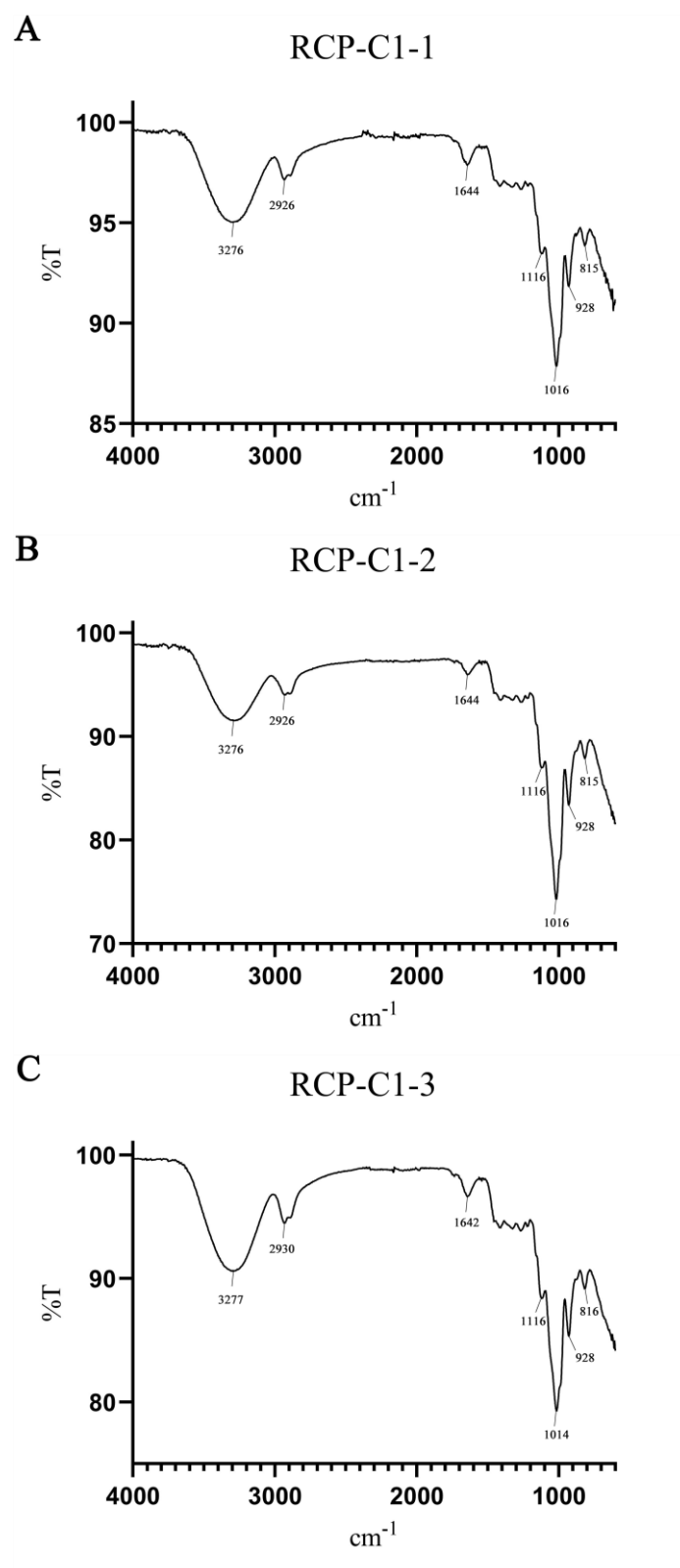


Figure S4: FT-IR spectrum of RCP-C1-1, 2, and 3.

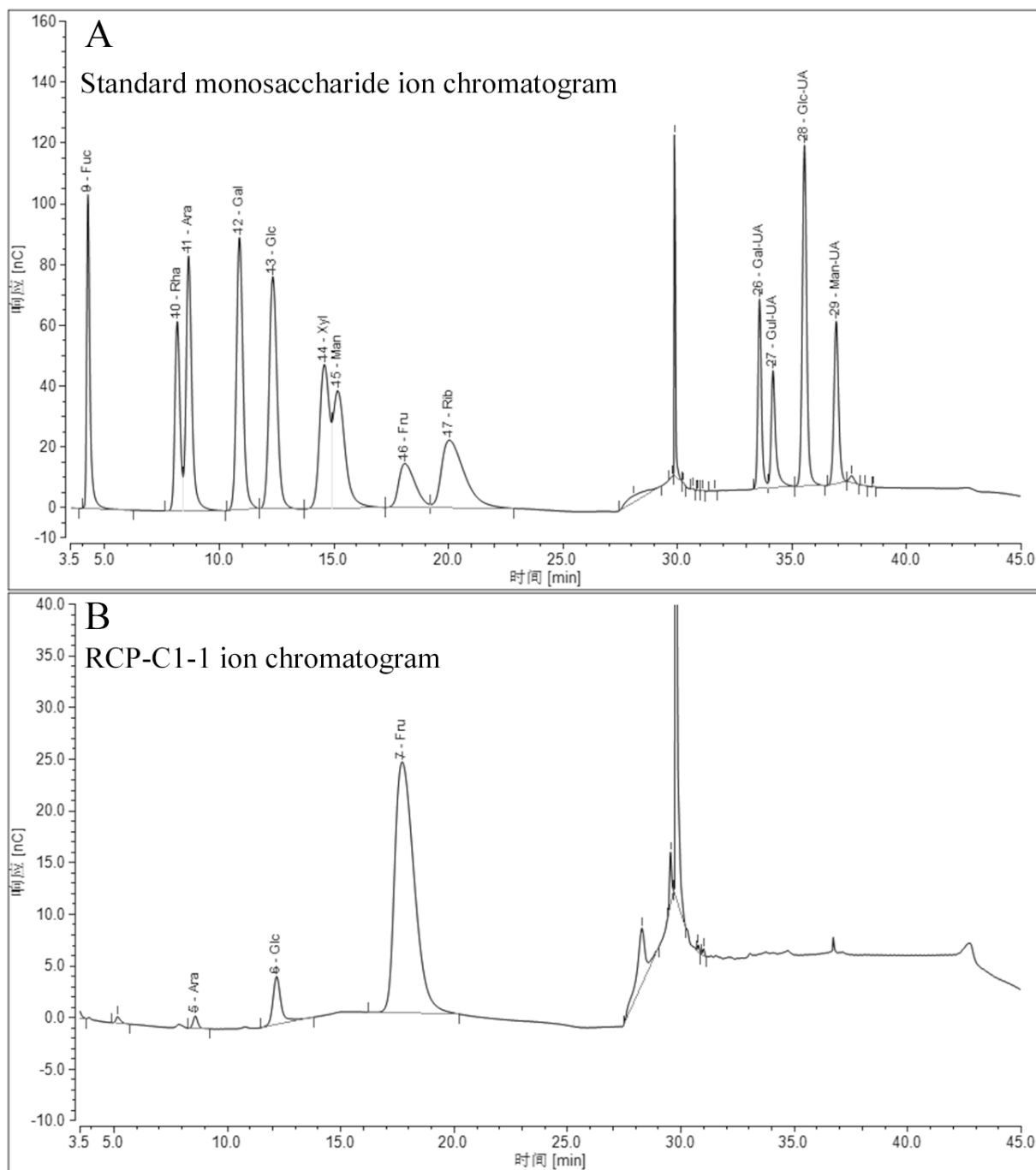


Figure S5: HR-ESI-MS spectrum of RCP-C1-1.

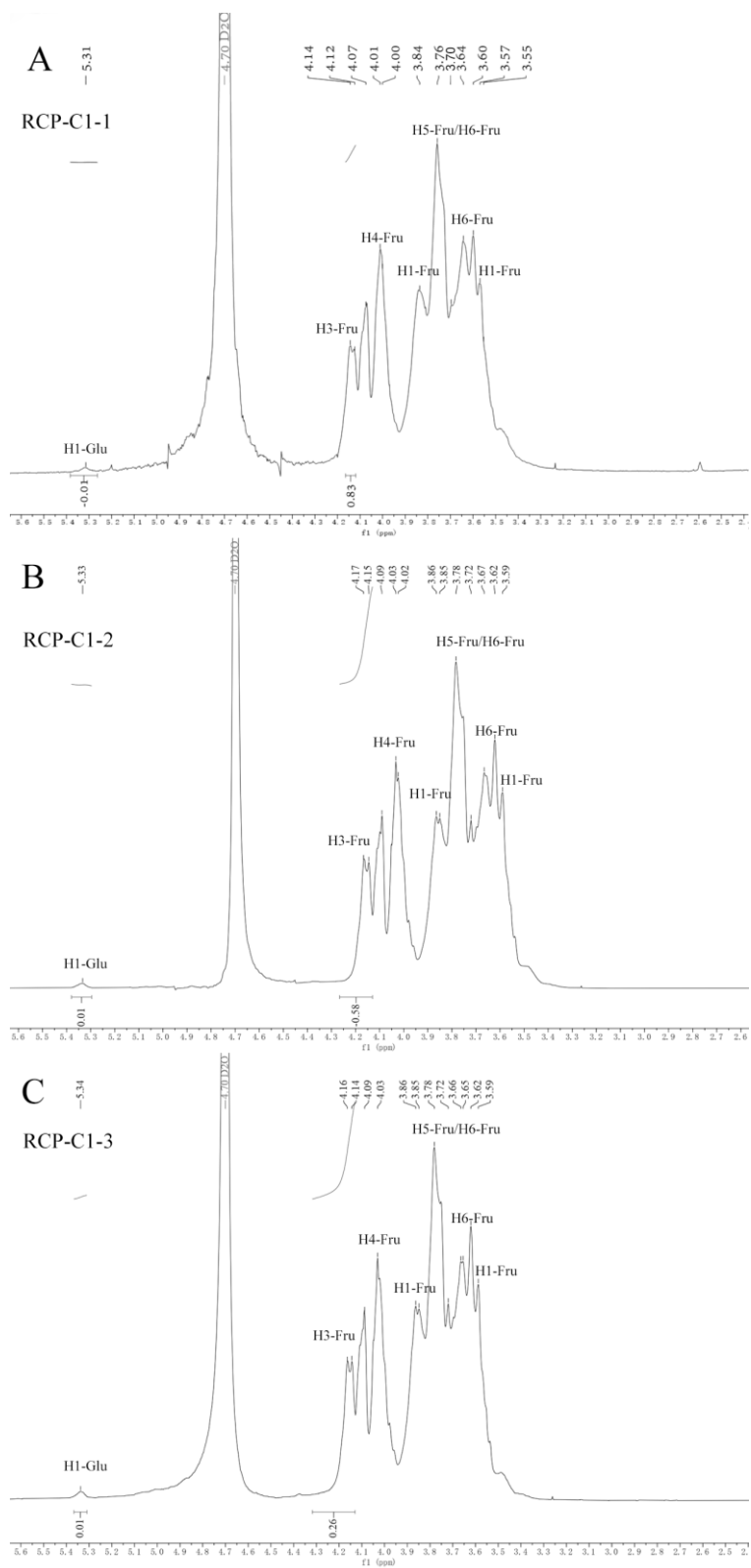


Figure S6: $^1\text{H-NMR}$ spectrum of RCP-C1-1, 2, and 3.

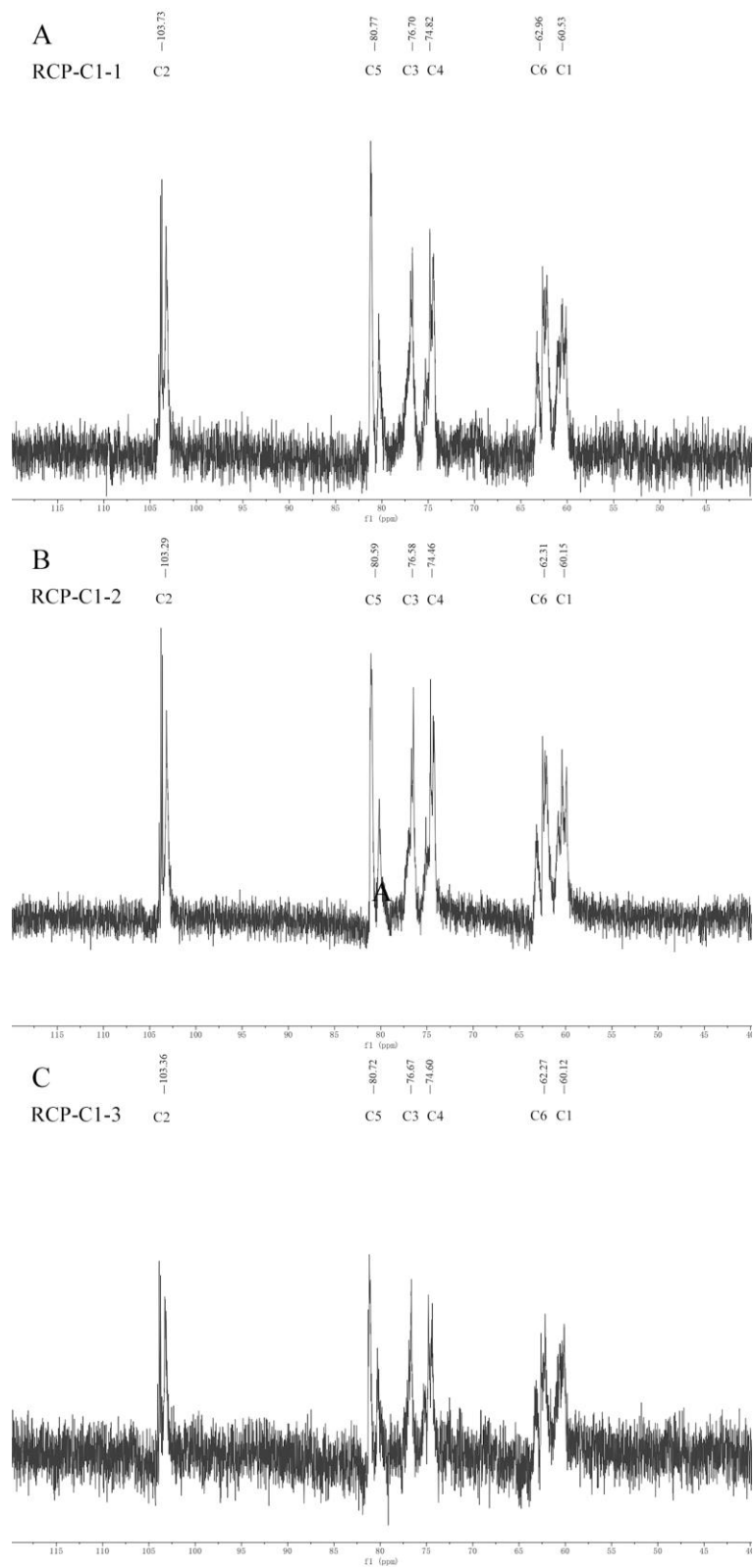


Figure S7: ^{13}C -NMR spectrum of RCP-C1-1, 2, and 3.

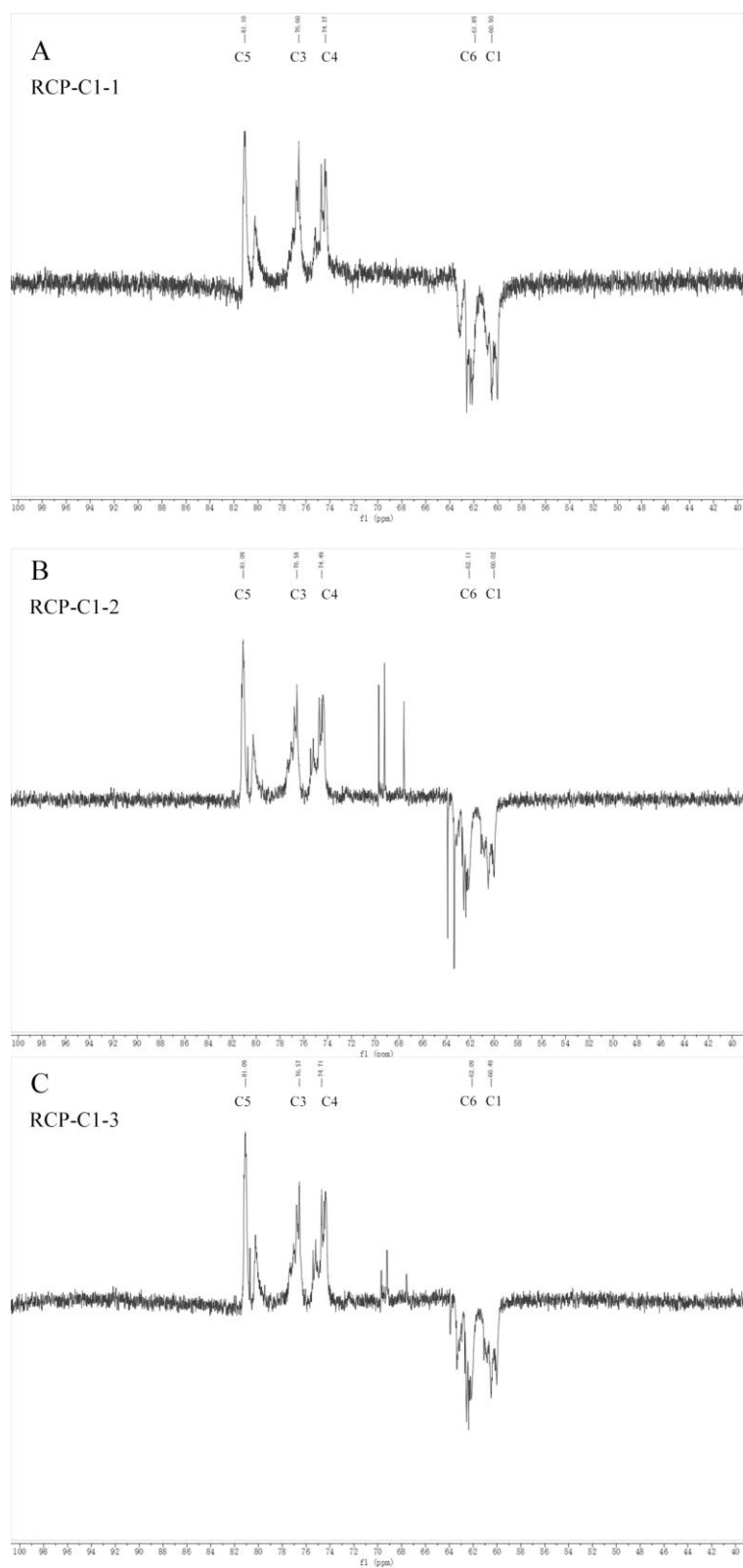


Figure S8: DEPT135 spectrum of RCP-C1-1, 2, and 3.

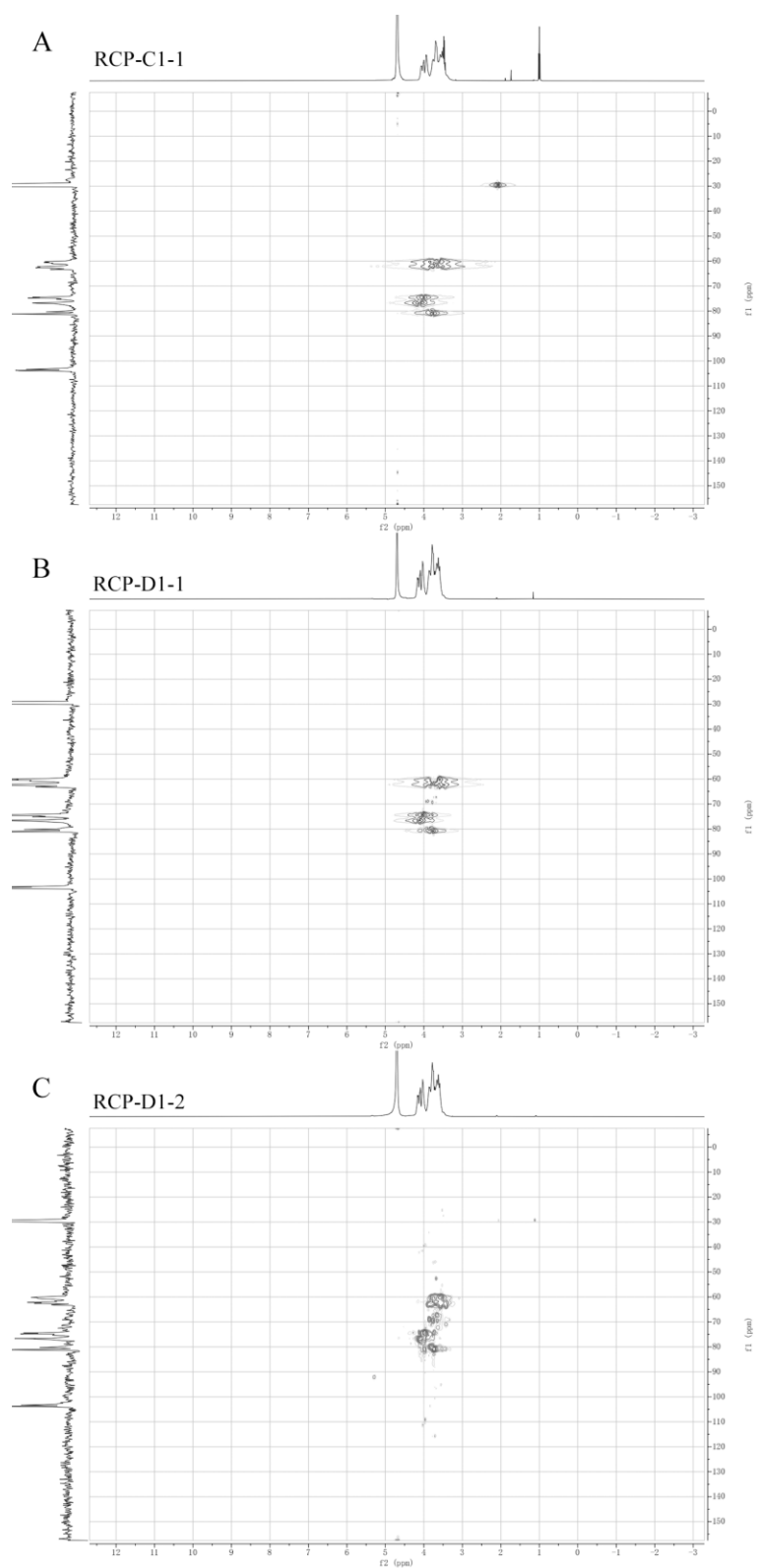


Figure S9: HSQC spectrum of RCP-C1-1, 2, and 3.

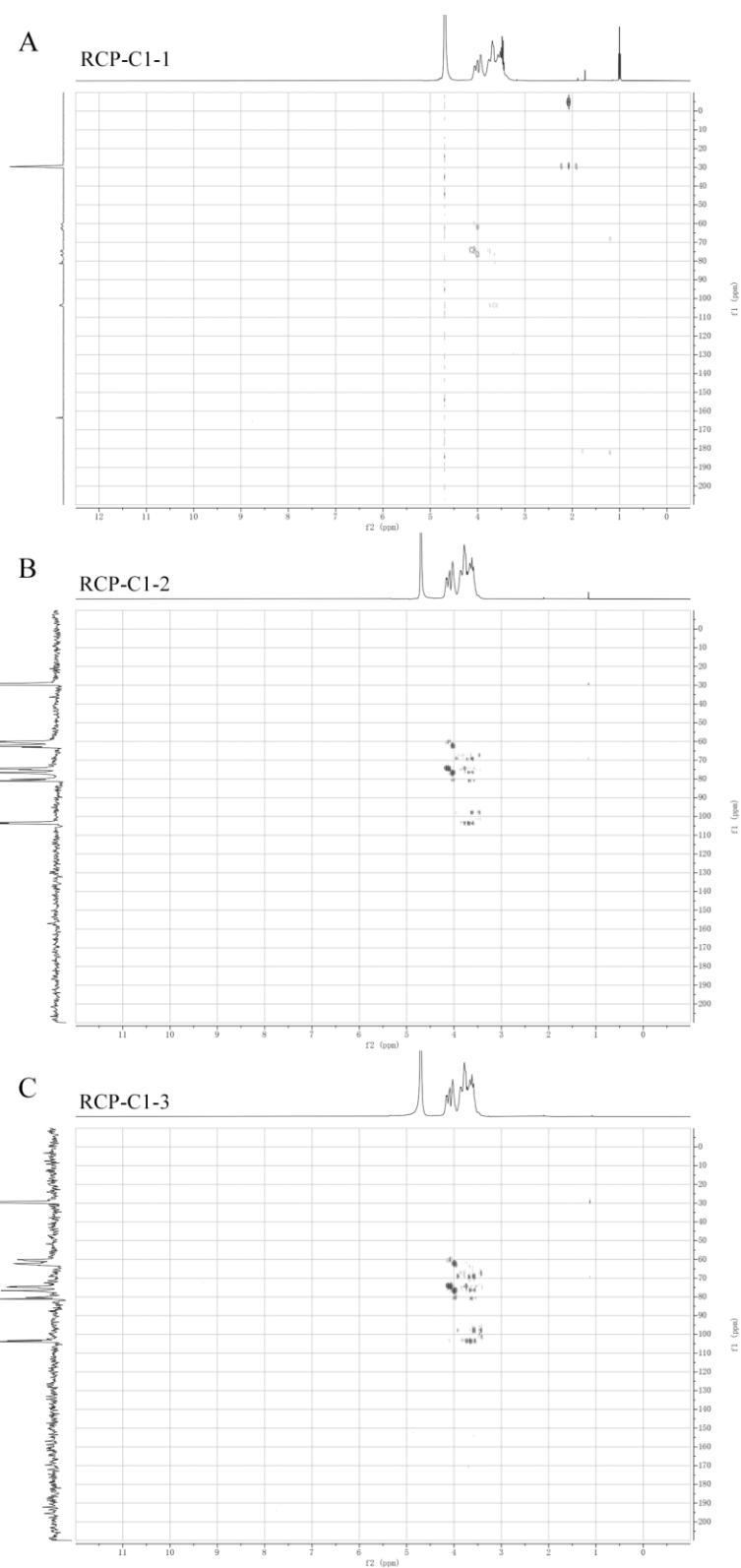


Figure S10: HMBC spectrum of RCP-C1-1, 2, and 3.