

Supporting information

J. Chem. Metrol. 18:1 (2024) 19-29

Simultaneous estimation of dapagliflozin and linagliptin using reverse phase-HPLC with photo diode array (PDA)

Anchal Shukla, Usangani Chhalotiya^{*}, Dimal Shah, Jinal Tandel,

Heta Kachhiya and Mital Parmar

Indukaka Ipcowala College of Pharmacy, A constituent college of The CVM University, Beyond GIDC, P.B. No. 53, Vitthal Udyognagar- 388 121, Gujarat, India

Table of Contents	Page
Figure S1: Structure of Dapagliflozin	2
Figure S2: Structure of Linagliptin	2
Figure S3: Dapagliflozin and Linagliptin (10 μ g/mL) UV spectra	2
Figure S4: Calibration curves of dapagliflozin and linagliptin (0.1 – 20 μ g/mL) combination (1:1)	3
Figure S5: Summary of uncertainty calculation for Dapagliflozin	4
Figure S6: Summary of uncertainty calculation for Linagliptin	5

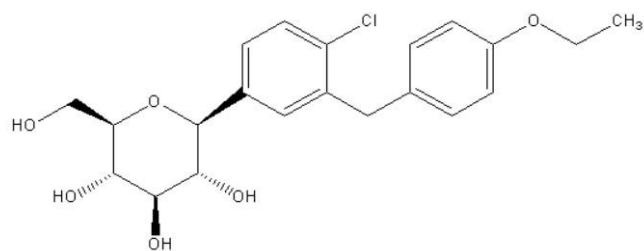


Figure S1: Structure of Dapagliflozin

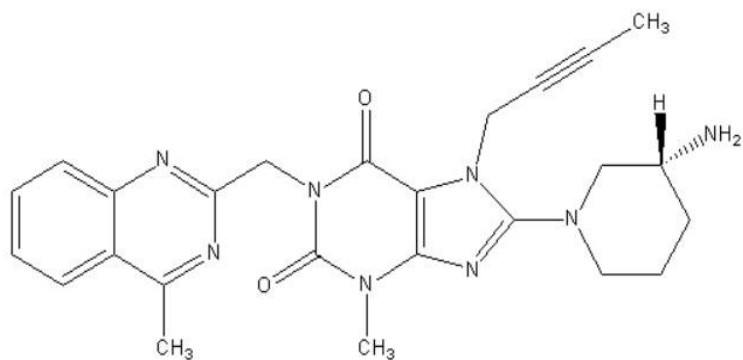


Figure S2: Structure of Linagliptin

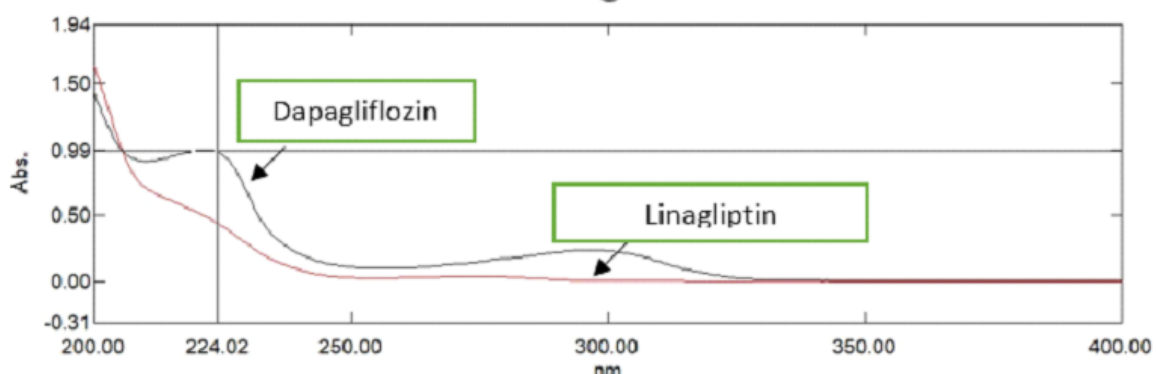


Figure S3: Dapagliflozin and linagliptin (10 μ g/mL) UV spectra

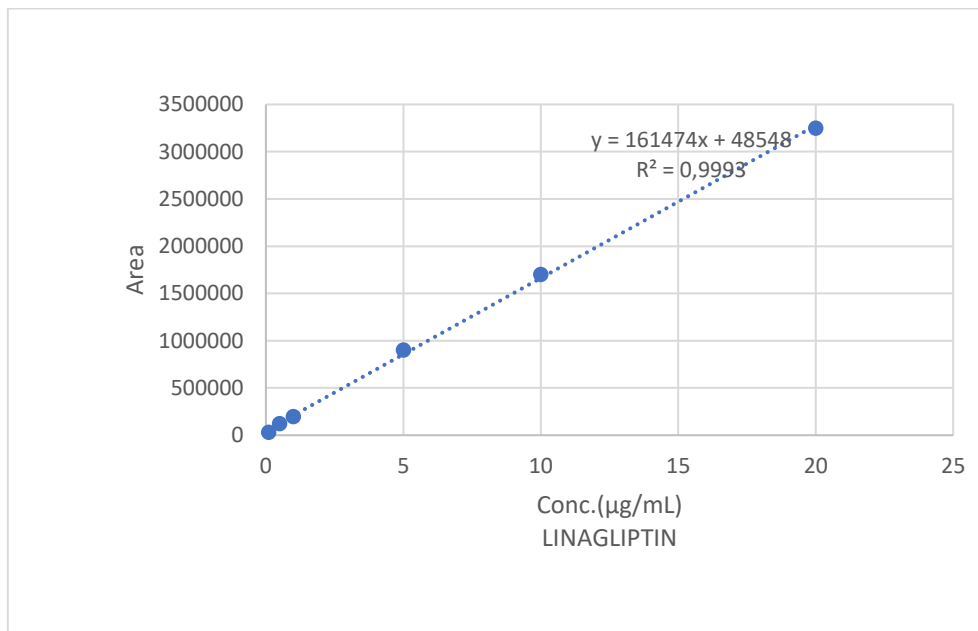
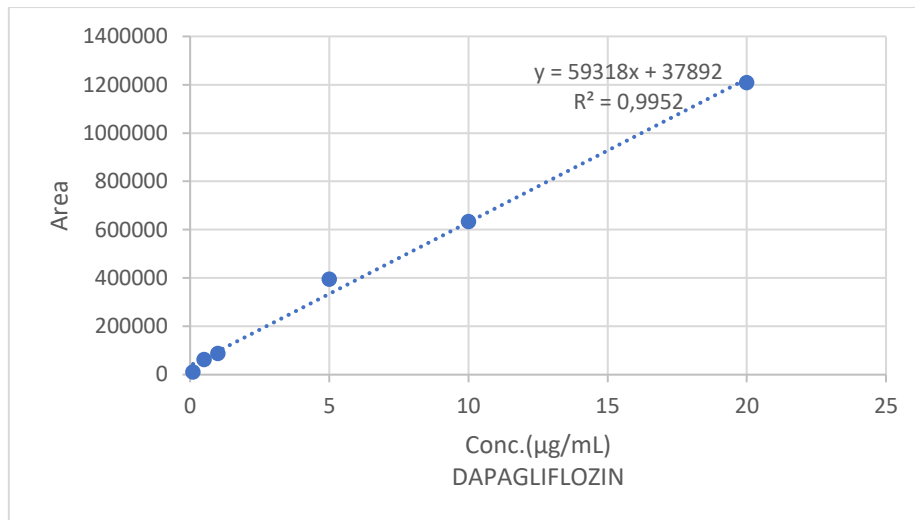


Figure S4: Calibration curves of dapagliflozin and linagliptin (0.1 – 20 µg/mL) combination (1:1)

Regression Statistics for Dapagliflozin								
Multiple R	0.997581648							
R Square	0.995169144							
Adjusted R Square	0.993961431							
Standard Error	35970.11419							
Observations	6							
ANOVA								
	df	SS	MS	F	Significance F			
Regression	1	1.06615E+12	1.06615E+12	824.0107	8.76557E-06			
Residual	4	5175396460	1293849115					
Total	5	1.07132E+12						
	Coefficients	Standard Error	t Stat	P-value	Lower 95%	Upper 95%	Lower 95.0%	Upper 95.0%
Intercept	37891.68062	19352.85567	1.957937436	0.121842	-15840.46078	91623.82	-15840.46078	91623.82203
X Variable 1	59318.05782	2066.429068	28.70558624	8.77E-06	53580.73095	65055.38	53580.73095	65055.38469

Figure S5: Summary of uncertainty calculation for Dapagliflozin

Regression Statistics for Linagliptin	
Multiple R	0.999631138
R Square	0.999262412
Adjusted R Square	0.999078015
Standard Error	38182.11282
Observations	6

ANOVA					
	df	SS	MS	F	Significance F
Regression	1	7.90034E+12	7.9E+12	5419.083	2.04064E-07
Residual	4	5831494957	1.46E+09		
Total	5	7.90617E+12			

	Coefficients	Standard Error	t Stat	P-value	Lower 95%	Upper 95%	Lower 95.0%	Upper 95.0%
Intercept	48547.966	20542.96838	2.36324	0.077389	-8488.458017	105584.39	-8488.45802	105584.39
X Variable 1	161473.6067	2193.505069	73.61442	2.04E-07	155383.4603	167563.75	155383.46	167563.7531

Figure S6: Summary of uncertainty calculation for Linagliptin