

Supporting Information

Rec. Nat. Prod. X:X (202X) XX-XX

Differentiation of *Achillea millefolium*, *A. crithmifolia*, and *A. nobilis* through Analysis of Volatile Constituents using HS-SPME-GC/MS and Chemometric Techniques

Bledar Pulaj, Behxhet Mustafa and Avni Hajdari*

*Department of Biology, Faculty of Mathematics and Natural Science, University of Prishtina,
Mother Theresa, St. 10000 Prishtinë, Kosovo.*

Table of Contents	Page
Figure S1: ESI-MS spectrum of Unknown 1	2

* Corresponding author: E-Mail: avni.hajdari@uni-pr.edu; Phone: +383 38 249 872; Fax: +383 38 226 104

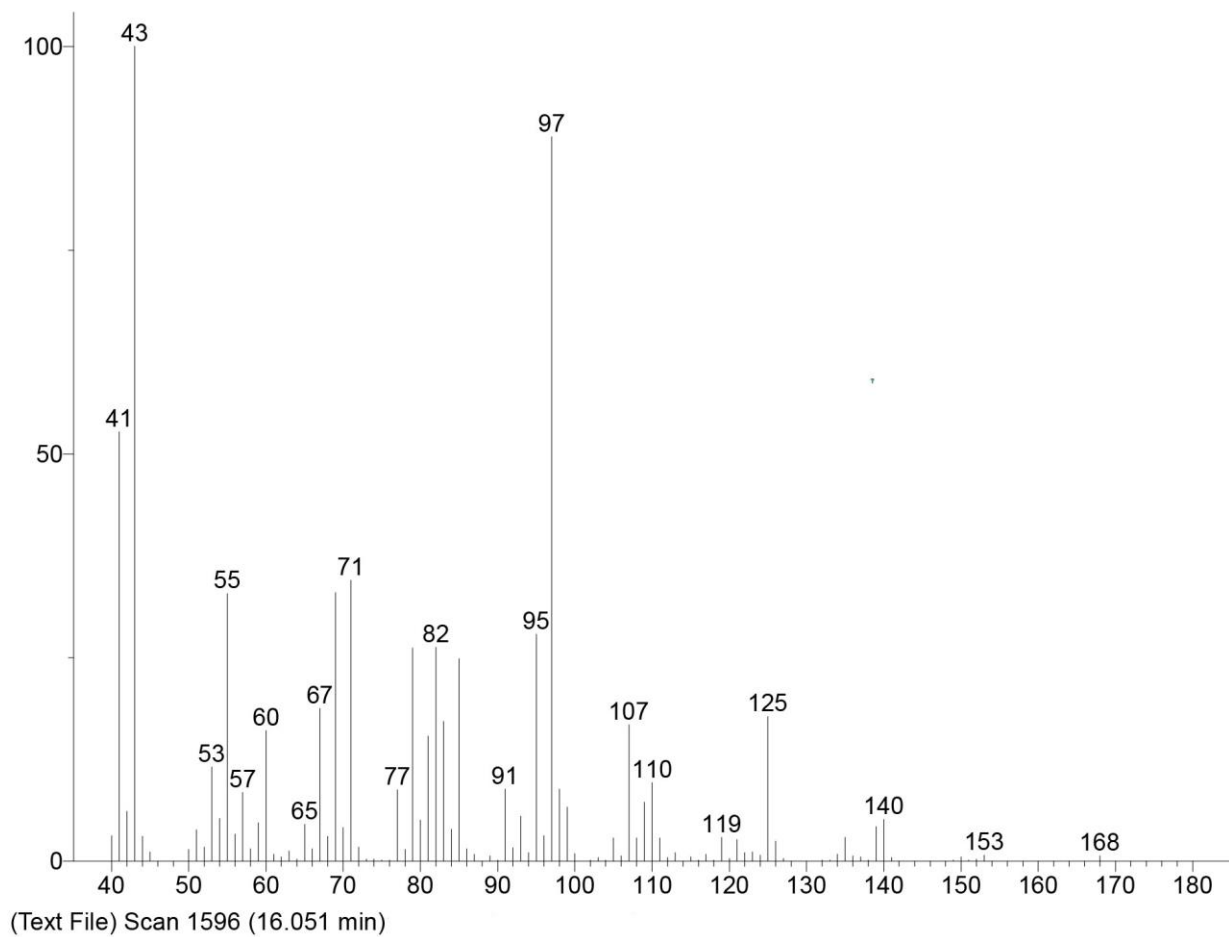


Figure S1: ESI-MS spectrum of Unknown 1