

## Supporting Information

*Rec. Nat. Prod.* X:X (202X) XX-XX

### Essential Oil Composition and Antibacterial Activity of *Trixis michuacana* Lex. var. *michuacana* and *Trixis michuacana* var. *longifolia*

Luis D. Herrera-Sanabria<sup>1</sup>, Ana K. Villagómez-Guzmán<sup>2</sup>, José Herrera-Camacho<sup>3</sup>, Edgar A. Estrella-Parra<sup>4</sup>, José G. Avila-Acevedo<sup>4</sup>, Rosa E. del Río,<sup>1</sup> Gabriela Rodríguez-García<sup>1</sup>, Tzasna Hernández-Delgado<sup>2\*</sup>

And Mario A. Gómez-Hurtado<sup>1\*</sup>

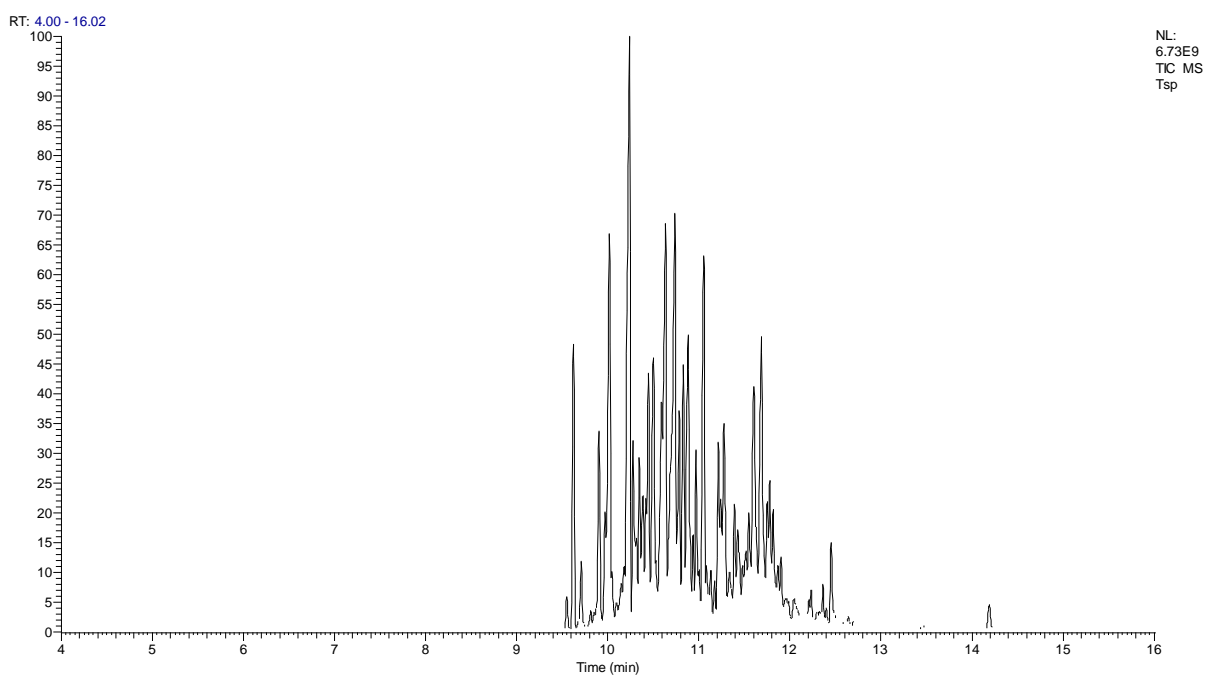
<sup>1</sup>Instituto de Investigaciones Químico Biológicas, Universidad Michoacana de San Nicolás de Hidalgo, Ciudad Universitaria, Morelia, Michoacán 58030, Mexico

<sup>2</sup>Laboratorio de Bioactividad de Productos Naturales, Unidad de Biotecnología y Prototipos, Facultad de Estudios Superiores Iztacala, Universidad Nacional Autónoma de México, Tlalnepantla, Estado de México 54090, Mexico

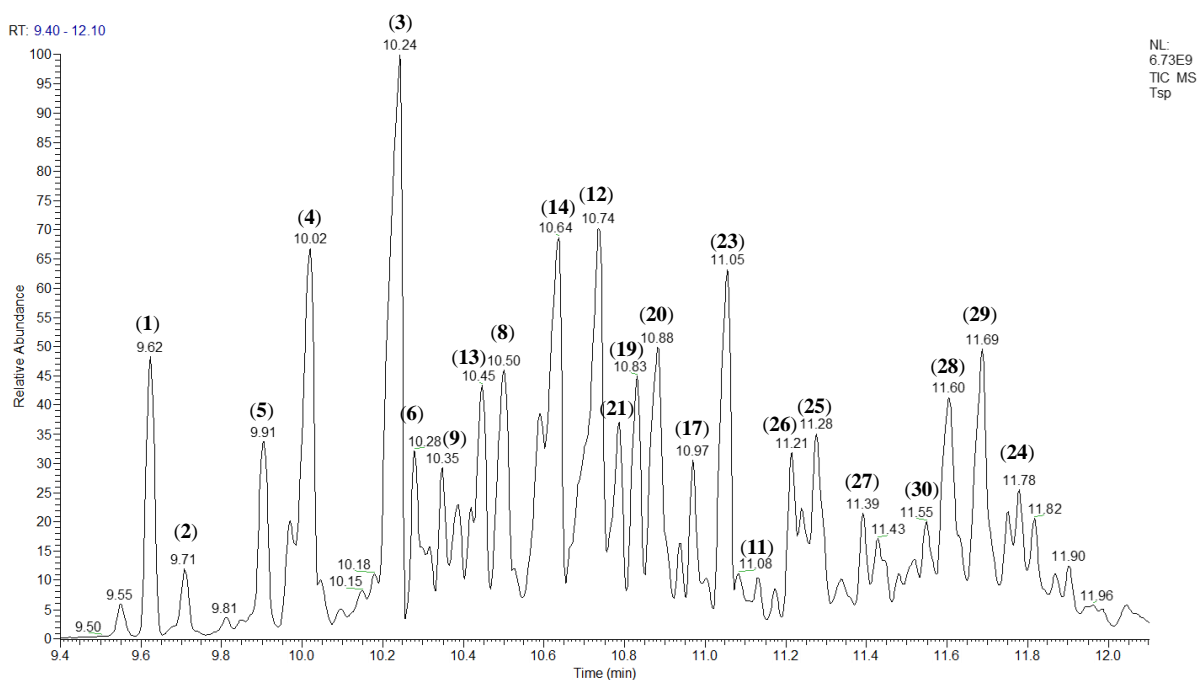
<sup>3</sup>Facultad de Medicina Veterinaria y Zootecnia, Universidad Michoacana de San Nicolás de Hidalgo, Tarímbaro, Michoacán 58880, Mexico

<sup>4</sup>Laboratorio de Fitoquímica, Unidad de Biotecnología y Prototipos, Facultad de Estudios Superiores Iztacala, Universidad Nacional Autónoma de México, Tlalnepantla, Estado de México 54090, Mexico

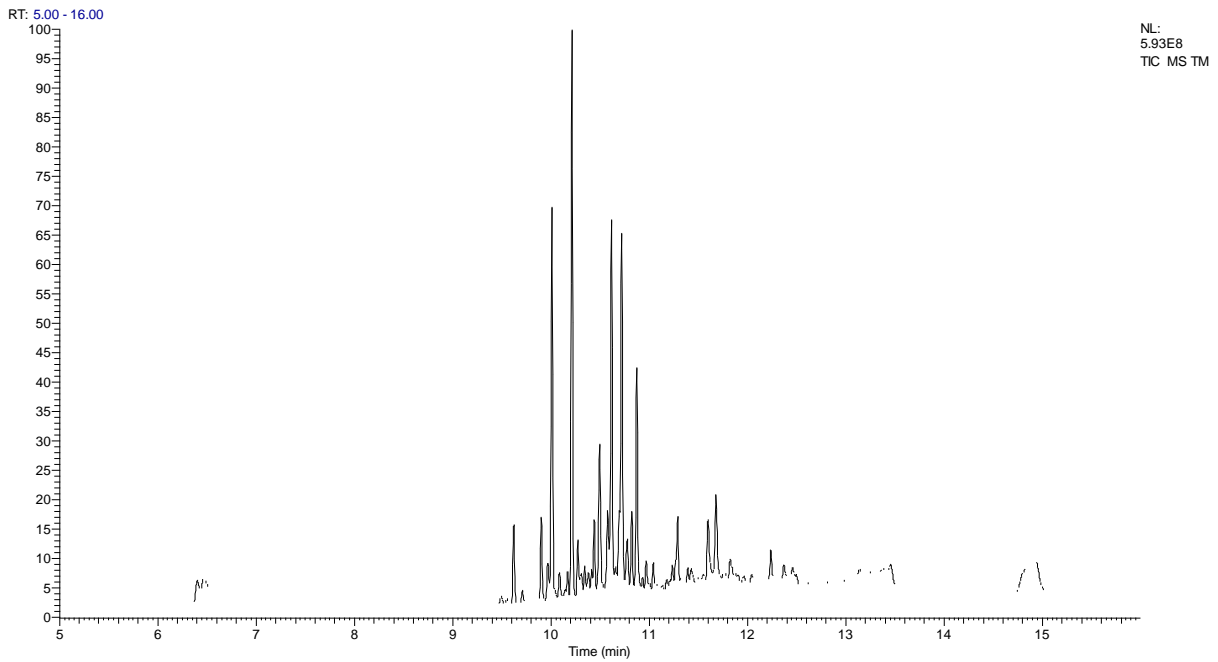
Table of Contents	Page
<b>Figure S1:</b> Chromatogram of the essential oil from <i>Trixis michuacana</i> Lex. var. <i>michuacana</i> (From 4.0 to 16.0 min)	2
<b>Figure S2:</b> Ampliation of the chromatogram of the essential oil from <i>T. michuacana</i> Lex. var. <i>michuacana</i> (From 9.4 to 12.1 min). Labels for the identified compounds are given in parentheses	2
<b>Figure S3:</b> Chromatogram of the essential oil from <i>T. michuacana</i> var. <i>longifolia</i> (From 5.0 to 16.0 min)	3
<b>Figure S4:</b> Ampliation of the chromatogram of the essential oil from <i>T. michuacana</i> var. <i>longifolia</i> (From 8.0 to 12.0 min). Labels for the identified compounds are given in parentheses.	3
<b>Table S1:</b> Antibacterial activity of the essential oil of <i>T. michuacana</i> Lex. var. <i>michuacana</i> and <i>T. michuacana</i> var. <i>longifolia</i>	4



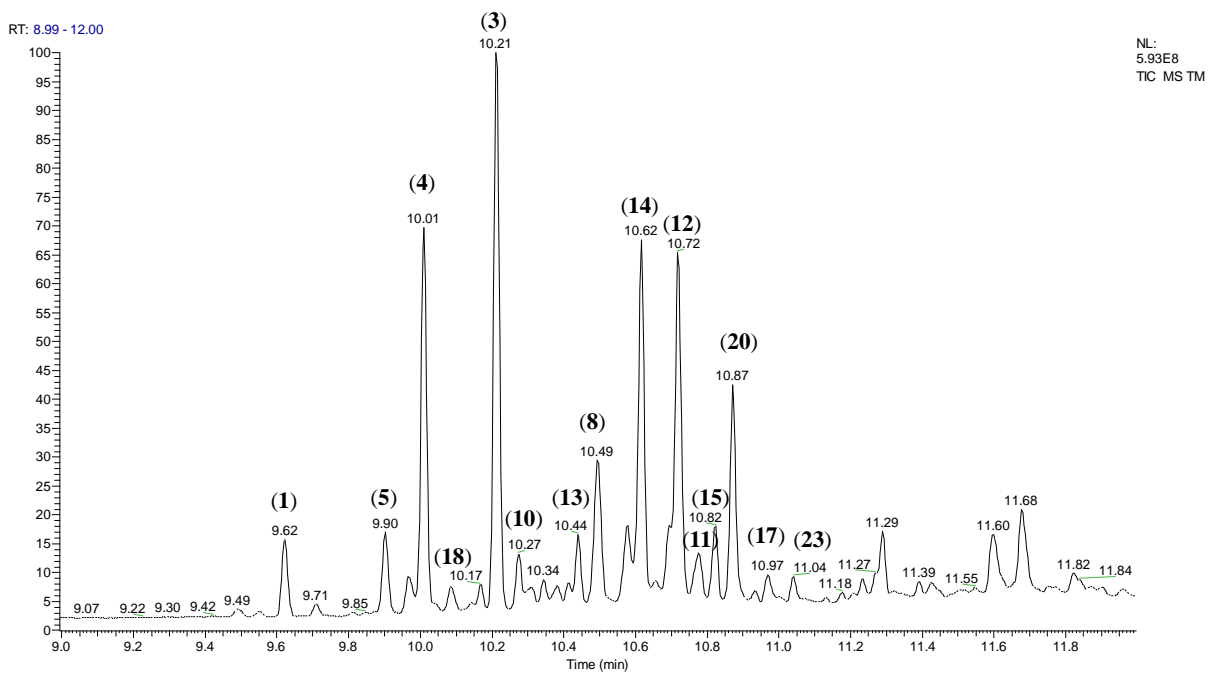
**Figure S1:** Chromatogram of the essential oil from *T. michuacana* Lex. var. *michuacana* (From 4.0 to 16.0 min).



**Figure S2:** Ampliation of the chromatogram of the essential oil from *T. michuacana* Lex. var. *michuacana* (From 9.4 to 12.1 min). Labels for the identified compounds are given in parentheses.



**Figure S3:** Chromatogram of the essential oil from *Trixis michuacana* var. *longifolia* (From 5.0 to 16.0 min).



**Figure S4:** Ampliation of the chromatogram of the essential oil from *Trixis michuacana* var. *longifolia* (From 9.0 to 12.0 min). Labels for the identified compounds are given in parentheses.

**Table S1:** Antibacterial activity of the essential oil of *T. michuacana* Lex. var. *michuacana* and *T. michuacana* var. *longifolia*.

Bacteria and fungi strains	Inhibition zone	
	<i>T. michuacana</i> Lex. var. <i>michuacana</i>	<i>T. michuacana</i> var. <i>longifolia</i>
<i>E. coli</i> ATCC 25922	-	-
<i>E. coli</i> 82MR	-	-
<i>K. pneumoniae</i> ATCC 13883	10.30 ± 0.58	11.30 ± 0.58
<i>P. aeruginosa</i> ATCC 27853	-	-
<i>S. aureus</i> ATCC 29213	7.67 ± 0.58	10.00 ± 0.00
<i>S. aureus</i> 23MR	8.30 ± 0.58	7.67 ± 0.58
<i>S. epidermidis</i> ATCC 12228	8.30 ± 0.58	9.67 ± 0.58
<i>S. epidermidis</i>	10.67 ± 1.15	21.67 ± 0.58
<i>C. albicans</i> 17 MR	-	-
<i>C. glabrata</i>	-	-
<i>C. tropicalis</i>	-	-

To perform the disk diffusion method, 4  $\mu\text{L}$  of the essential oils were used, and chloramphenicol (25  $\mu\text{g}/\text{mL}$ ) was applied as positive control. The measurement of the inhibition zone is reported in mm, along with the standard deviation data. MR denotes a multi-resistant strain. (-) Does not show activity.