

## Supporting Information

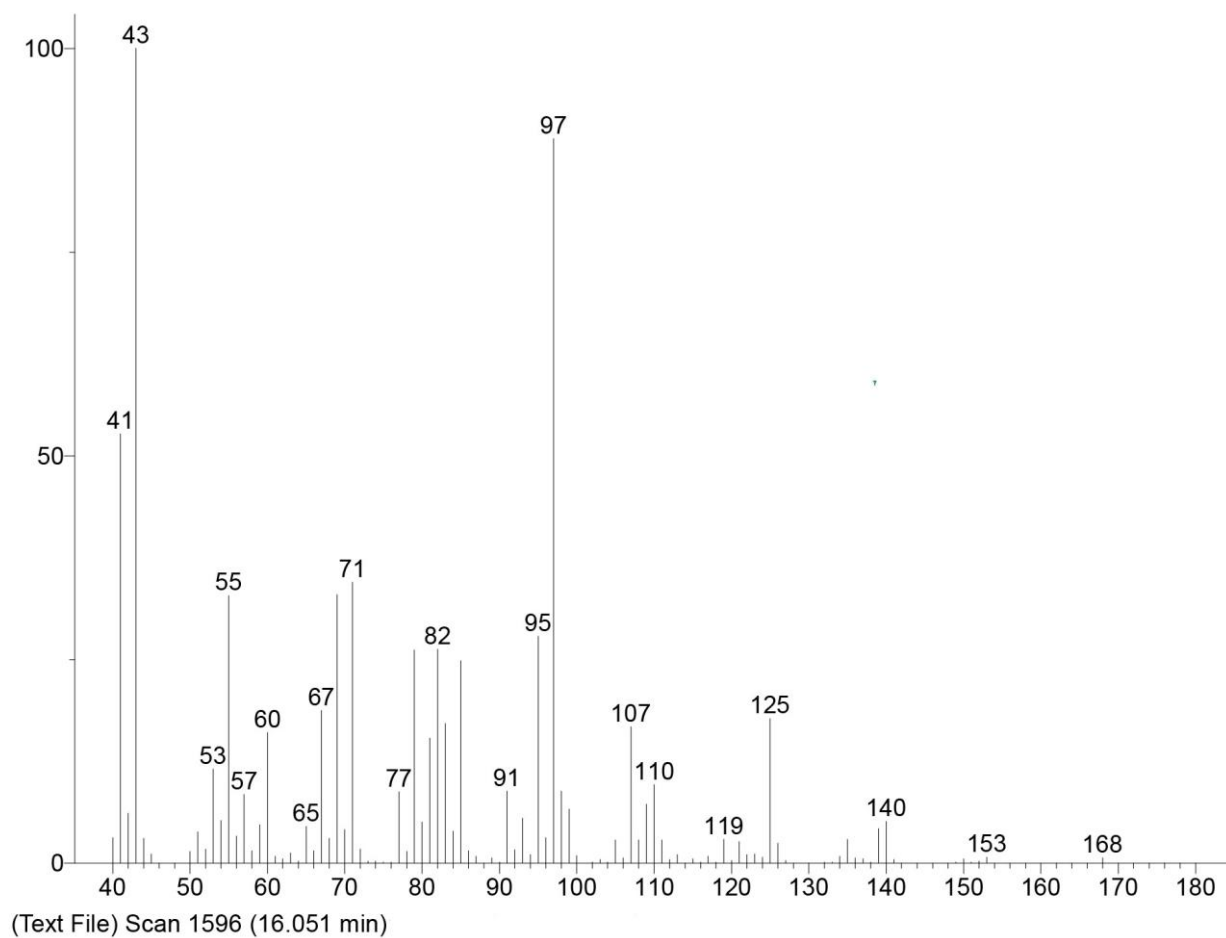
*Rec. Nat. Prod.* 18:6 (2024) 597-609

### Differentiation of *Achillea millefolium*, *A. crithmifolia*, and *A. nobilis* through Analysis of Volatile Constituents using HS-SPME-GC/MS and Chemometric Techniques

**Bledar Pulaj, Behxhet Mustafa and Avni Hajdari\***

*Department of Biology, Faculty of Mathematics and Natural Science, University of Prishtina,  
Mother Theresa, St. 10000 Prishtinë, Kosovo.*

<b>Table of Contents</b>		<b>Page</b>
<b>Figure S1:</b> ESI-MS spectrum of Unknown 1		2



**Figure S1:** ESI-MS spectrum of Unknown 1